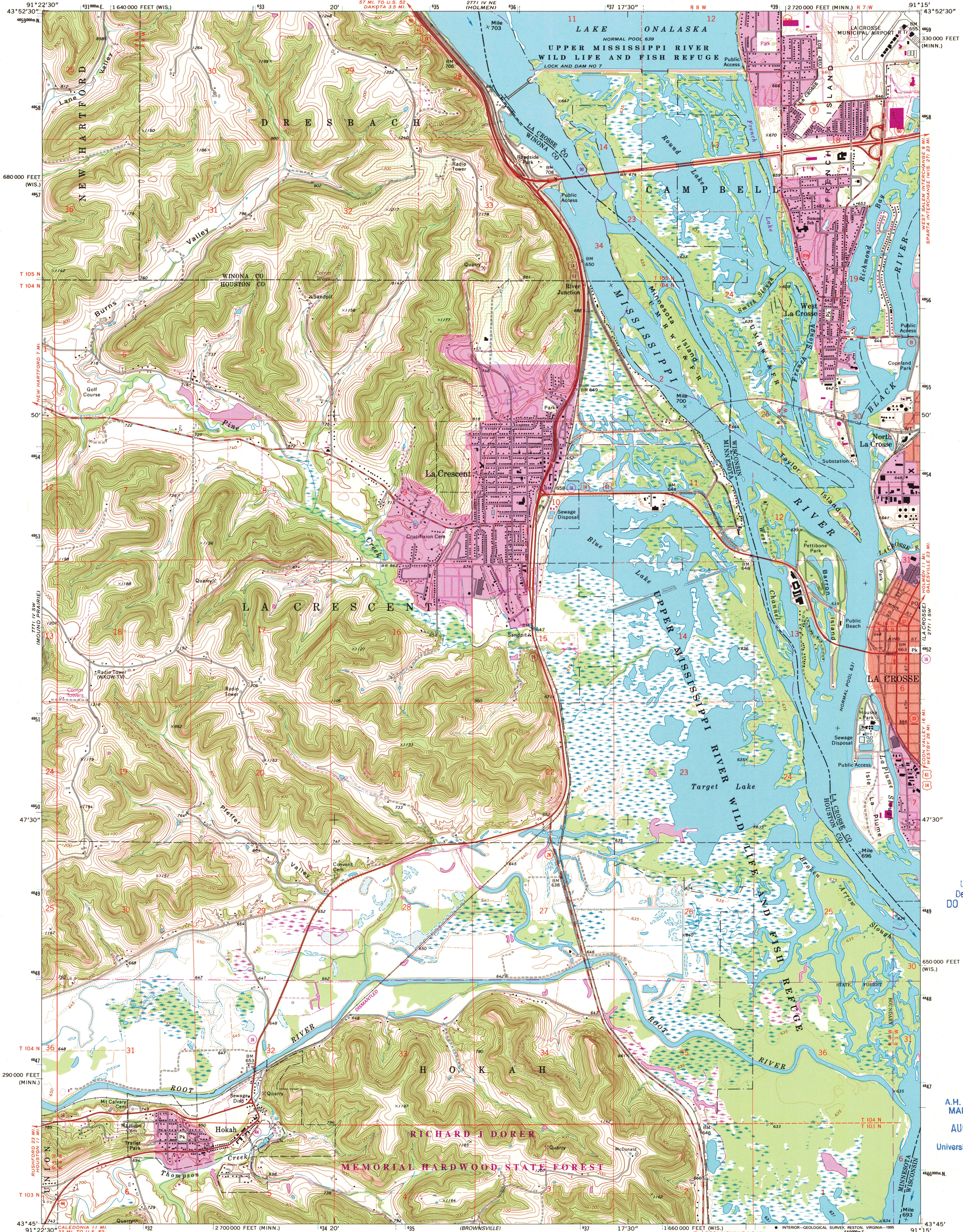


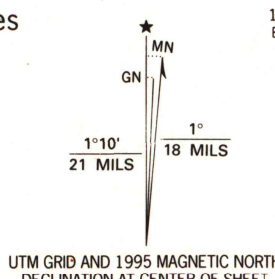
UNITED STATES
DEPARTMENT OF THE INTERIOR
GEOLOGICAL SURVEY

LA CRESCENT QUADRANGLE
MINNESOTA-WISCONSIN
7.5 MINUTE SERIES (TOPOGRAPHIC)



Produced by the United States Geological Survey
Wisconsin area mapped in cooperation with State of Wisconsin agencies
Compiled by photogrammetric methods from imagery dated 1973
Field checked 1973

North American Datum of 1927 (NAD 27)
Projection: Minnesota coordinate system, south zone
(Lambert conformal conic)
10 000-foot ticks: Minnesota coordinate system, south zone and
Wisconsin coordinate system, south zone
Blue 1000-meter Universal Transverse Mercator ticks, zone 15
North American Datum of 1983 (NAD 83) is shown by dashed
corner ticks. The values of the shift between NAD 27 and NAD 83
for 7.5-minute intersections are obtainable from National Geodetic
Survey NADCON software
There may be private inholdings within the boundaries of
the National or State reservations shown on this map



SCALE 1:24 000
CONTOUR INTERVAL 20 FEET
DOTTED LINES REPRESENT 5-FOOT CONTOURS
NATIONAL GEODETIC VERTICAL DATUM OF 1929
THIS MAP COMPLIES WITH NATIONAL MAP ACCURACY STANDARDS
FOR SALE BY U.S. GEOLOGICAL SURVEY, DENVER, COLORADO 80225, OR RESTON, VIRGINIA 22092
AND WISCONSIN GEOLOGICAL AND NATURAL HISTORY SURVEY, MADISON, WISCONSIN 53706
A FOLDER DESCRIBING TOPOGRAPHIC MAPS AND SYMBOLS IS AVAILABLE ON REQUEST



ROAD CLASSIFICATION
Primary highway, hard surface —————
Secondary highway, hard surface —————
Unimproved road —————
Interstate Route —————
U. S. Route —————
State Route —————

Revisions shown in purple compiled in cooperation with
State of Minnesota agencies from imagery dated 1991
and other sources. Map edited 1995
Information shown in purple may not meet USGS content
standards and may conflict with previously mapped contours

LA CRESCENT, MN-WI
43091-G3-TF-024

1991

DMA 7771 IV SE-SERIES V872

U.S. Regional
Depository Copy
DO NOT DISCARD

A.H. ROBINSON
MAP LIBRARY
AUG 28 1995
University of Wisconsin
Madison

1995
copy
1-1