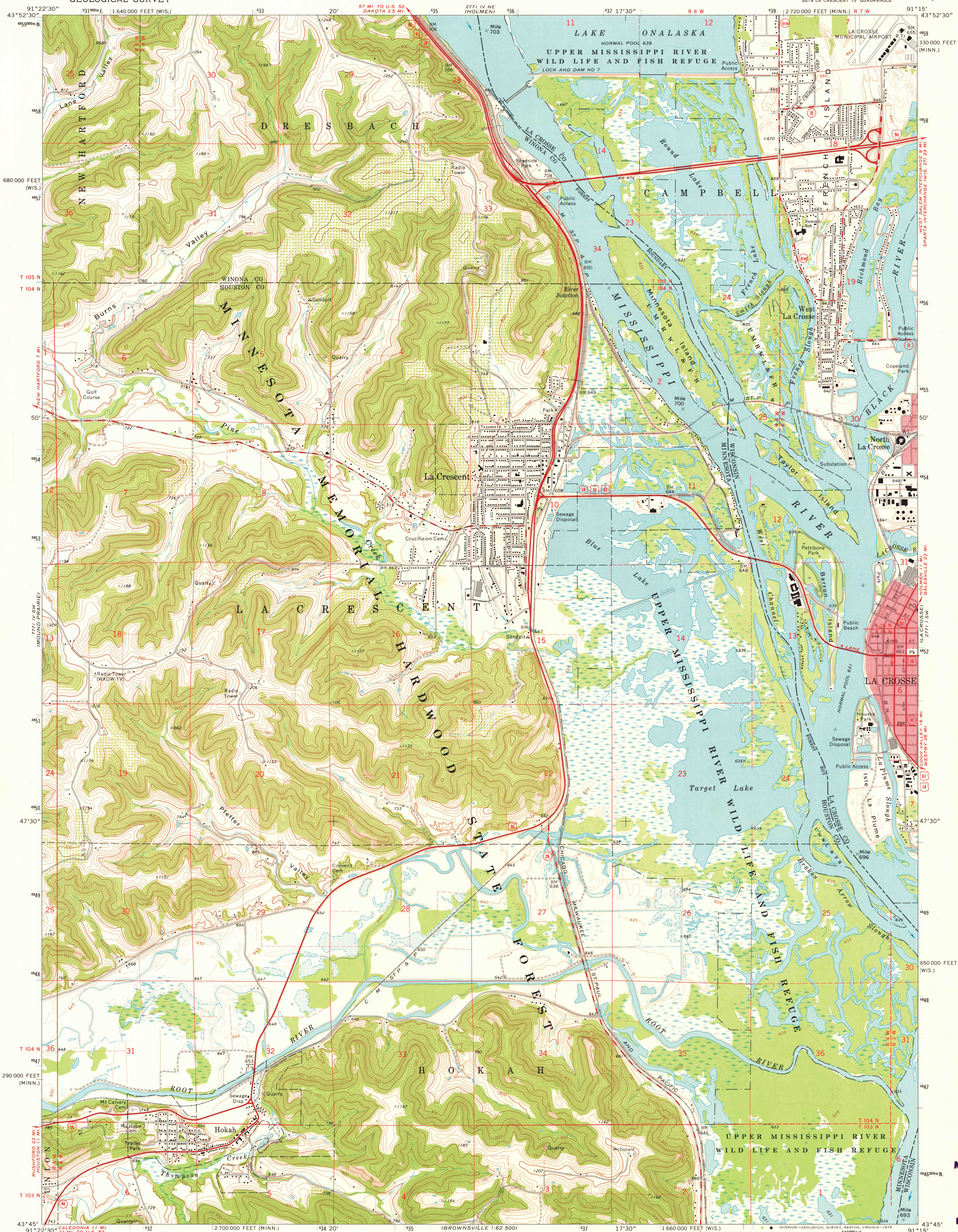


UNITED STATES
DEPARTMENT OF THE INTERIOR
GEOLOGICAL SURVEY

LA CRESCENT QUADRANGLE
MINNESOTA-WISCONSIN
7.5 MINUTE SERIES (TOPOGRAPHIC)
SE/4 LA CRESCENT 15' QUADRANGLE



Mapped, edited, and published by the Geological Survey
Wisconsin area mapped in cooperation with the State of Wisconsin agencies
Control by USGS, NOS/NOAA, and Minnesota Highway Department
Topography by photogrammetric methods from aerial
photographs taken 1973. Field checked 1973
Projection: Minnesota coordinate system, south zone
(Lambert conformal conic)
10,000-foot grid ticks based on Minnesota coordinate
system, south zone and Wisconsin coordinate system, south zone
1000-metre Universal Transverse Mercator grid ticks,
zone 15, shown in blue. 1927 North American datum
Red tint indicates areas in which only landmark buildings are shown
Fine red dashed lines indicate selected fence and field lines where
generally visible on aerial photographs. This information is unchecked

SCALE 1:24,000
CONTOUR INTERVAL 20 FEET
DOTTED LINES REPRESENT 5-FOOT CONTOURS
NATIONAL GEODETIC VERTICAL DATUM OF 1929

THIS MAP COMPLIES WITH NATIONAL MAP ACCURACY STANDARDS
FOR SALE BY U.S. GEOLOGICAL SURVEY, RESTON, VIRGINIA 22092
AND BY THE WISCONSIN GEOLOGICAL AND NATURAL HISTORY SURVEY, MADISON, WISCONSIN 53706
A FOLDER DESCRIBING TOPOGRAPHIC MAPS AND SYMBOLS IS AVAILABLE ON REQUEST

ROAD CLASSIFICATION
Primary highway, hard surface
Secondary highway, hard surface
Light-duty road, hard or improved surface
Unimproved road
Interstate Route
U.S. Route
State Route

LA CRESCENT, MINN.-WIS.
SE/4 LA CRESCENT 15' QUADRANGLE
N4345-W9115/7.5
1973

AMS 7771 IV SE-SERIES V872

MAP AND AIR PHOTO
LIBRARY
MAR 11 1976
University of Wisconsin

1973
COPY
MNI