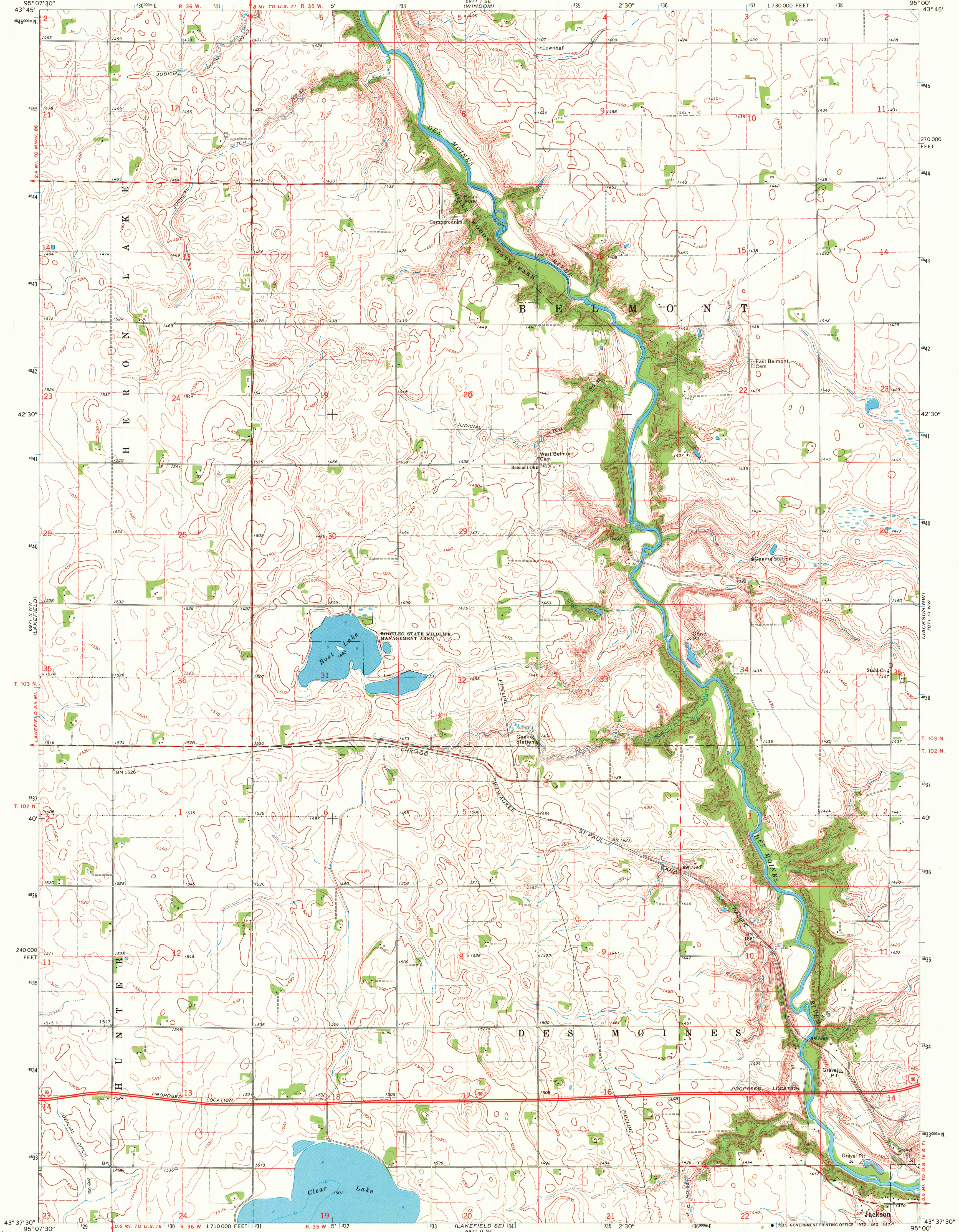


UNITED STATES  
DEPARTMENT OF THE INTERIOR  
GEOLOGICAL SURVEY

STATE OF MINNESOTA  
DEPARTMENT OF ADMINISTRATION

LAKEFIELD NE QUADRANGLE  
MINNESOTA—JACKSON CO.  
7.5 MINUTE SERIES (TOPOGRAPHIC)



Mapped, edited, and published by the Geological Survey

Control by USGS and USC&GS

Topography by photogrammetric methods from aerial photographs taken 1966. Field checked 1970

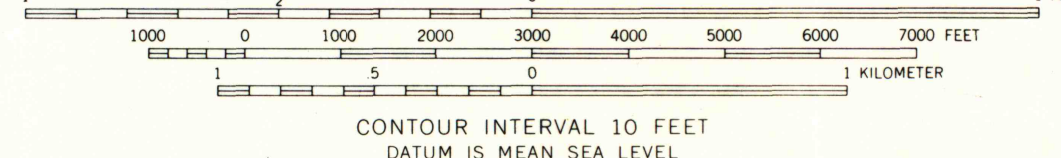
Depth curves and soundings compiled from charts furnished by Minnesota Department of Conservation

Polyconic projection. 1927 North American datum

10,000-foot grid based on Minnesota coordinate system, south zone

1000-meter Universal Transverse Mercator grid ticks, zone 15, shown in blue

Fine red dashed lines indicate selected fence and field lines where generally visible on aerial photographs. This information is unchecked



ROAD CLASSIFICATION  
Primary highway, all weather, Light-duty road, all weather, hard surface, improved surface  
Secondary highway, all weather, Unimproved road, fair or dry weather  
Interstate Route



MAP AND AIR PHOTO  
LIBRARY  
AUG 11 1972

LAKEFIELD NE, MINN.  
N4337.5—W9500/7.5

1970  
AMS 6971 II NE—SERIES V872

THIS MAP COMPLIES WITH NATIONAL MAP ACCURACY STANDARDS  
FOR SALE BY U.S. GEOLOGICAL SURVEY, DENVER, COLORADO 80225, OR WASHINGTON, D.C. 20242  
A FOLDER DESCRIBING TOPOGRAPHIC MAPS AND SYMBOLS IS AVAILABLE ON REQUEST