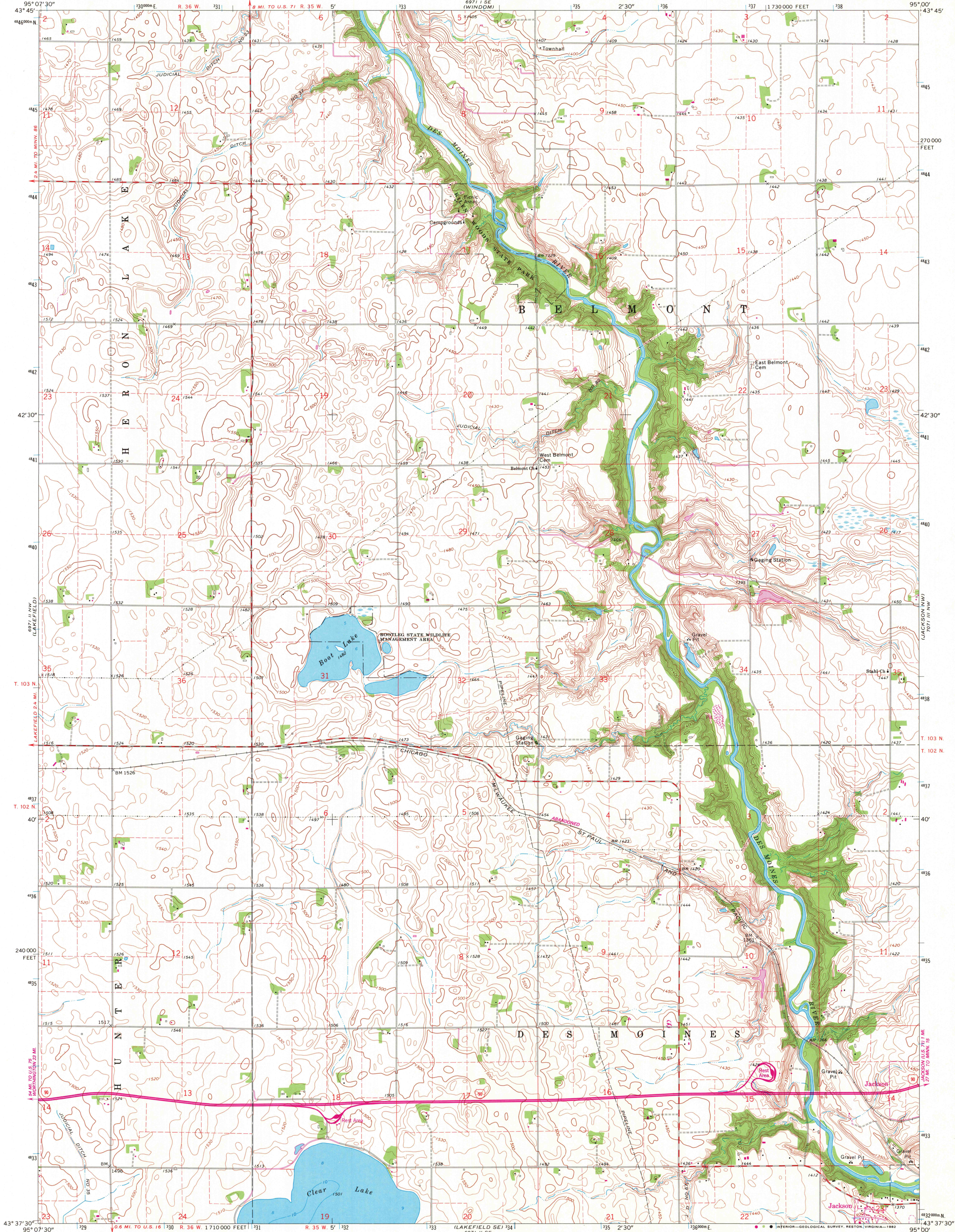


UNITED STATES
DEPARTMENT OF THE INTERIOR
GEOLOGICAL SURVEY

STATE OF MINNESOTA
DEPARTMENT OF ADMINISTRATION

LAKEFIELD NE QUADRANGLE
MINNESOTA—JACKSON CO.
7.5 MINUTE SERIES (TOPOGRAPHIC)



Mapped, edited, and published by the Geological Survey

Control by USGS and USC&GS

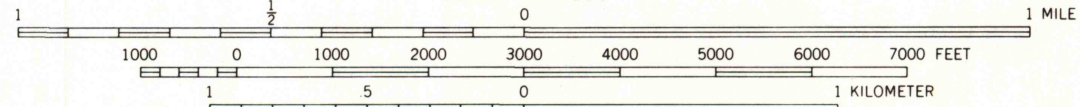
Topography by photogrammetric methods from aerial photographs taken 1966. Field checked 1970

Depth curves and soundings compiled from charts furnished by Minnesota Department of Conservation

Polyconic projection. 1927 North American datum 10,000-foot grid based on Minnesota coordinate system, south zone 1000-meter Universal Transverse Mercator grid ticks, zone 15, shown in blue

To place on the predicted North American Datum move the projection lines 6 meters north and 22 meters east as shown by dashed corner ticks

There may be private inholdings within the boundaries of the National or State Reservations shown on this map



CONTOUR INTERVAL 10 FEET
NATIONAL GEODETIC VERTICAL DATUM OF 1929

THIS MAP COMPLIES WITH NATIONAL MAP ACCURACY STANDARDS
FOR SALE BY U. S. GEOLOGICAL SURVEY, RESTON, VIRGINIA 22092
A FOLDER DESCRIBING TOPOGRAPHIC MAPS AND SYMBOLS IS AVAILABLE ON REQUEST

Revisions shown in purple compiled from aerial photographs taken 1980 and other sources
This information not field checked. Map edited 1982

ROAD CLASSIFICATION
Primary highway, all weather, Light-duty road, all weather, improved surface
Secondary highway, all weather, Unimproved road, fair or dry hard surface
Interstate Route

LAKEFIELD NE, MINN.
N4337.5—W9500/7.5

1970
PHOTOREVISED 1982
DMA 6971 II NE—SERIES V872

MAR 1 1983

RETURN TO:
USGS NHD HISTORICAL MAP ARCHIVE

USGS NHD HISTORICAL MAP ARCHIVE