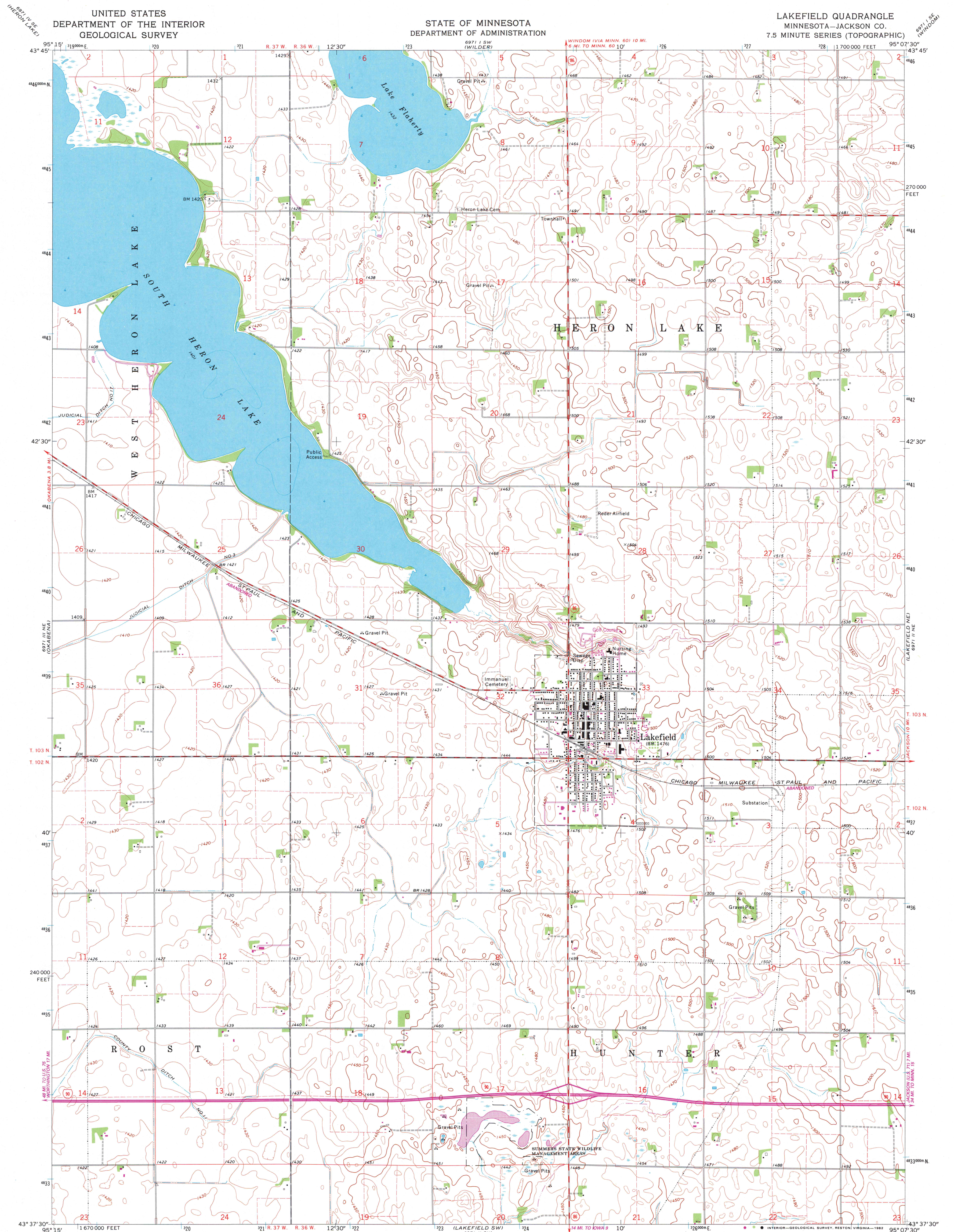


UNITED STATES
DEPARTMENT OF THE INTERIOR
GEOLOGICAL SURVEY

STATE OF MINNESOTA
DEPARTMENT OF ADMINISTRATION

LAKEFIELD QUADRANGLE
MINNESOTA—JACKSON CO.
7.5 MINUTE SERIES (TOPOGRAPHIC)



Mapped, edited, and published by the Geological Survey
Control by USGS and USC&GS

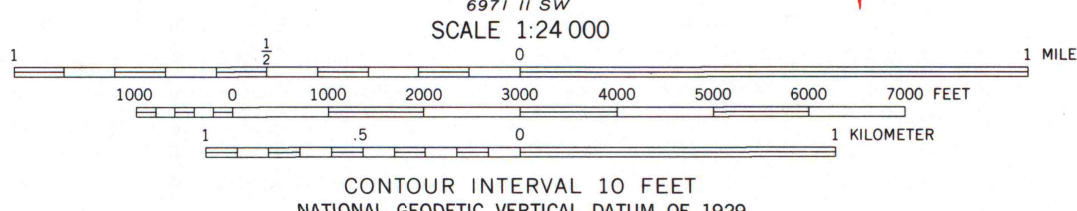
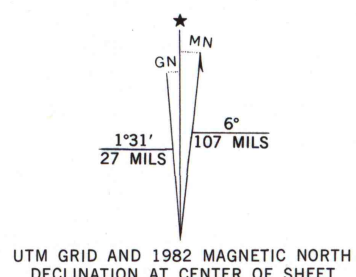
Topography by photogrammetric methods from aerial
photographs taken 1966. Field checked 1970

Depth curves and soundings compiled from charts furnished by
Minnesota Department of Conservation

Polyconic projection. 1927 North American datum
10,000-foot grid based on Minnesota coordinate system, south zone
1000-meter Universal Transverse Mercator grid ticks,
zone 15, shown in blue

To place on the predicted North American Datum 1983
move the projection lines 6 meters north and
23 meters east as shown by dashed corner ticks

There may be private inholdings within the boundaries of



THIS MAP COMPLIES WITH NATIONAL MAP ACCURACY STANDARDS
FOR SALE BY U. S. GEOLOGICAL SURVEY, RESTON, VIRGINIA 22092
A FOLDER DESCRIBING TOPOGRAPHIC MAPS AND SYMBOLS IS AVAILABLE ON REQUEST

ROAD CLASSIFICATION
Primary highway, all weather, hard surface
Secondary highway, all weather, hard surface
Light-duty road, all weather, improved surface
Unimproved road, fair or dry weather
Interstate Route
State Route



QUADRANGLE LOCATION

Revisions shown in purple compiled from aerial
photographs taken 1980 and other sources
This information not field checked. Map edited 1982

A.H. ROBINSON
MAP LIBRARY
APR 22 1983

LAKEFIELD, MINN.
N4337.5—W9507.5/7.5

1970
PHOTOREVISED 1982
DMA 6971 II NW—SERIES V872