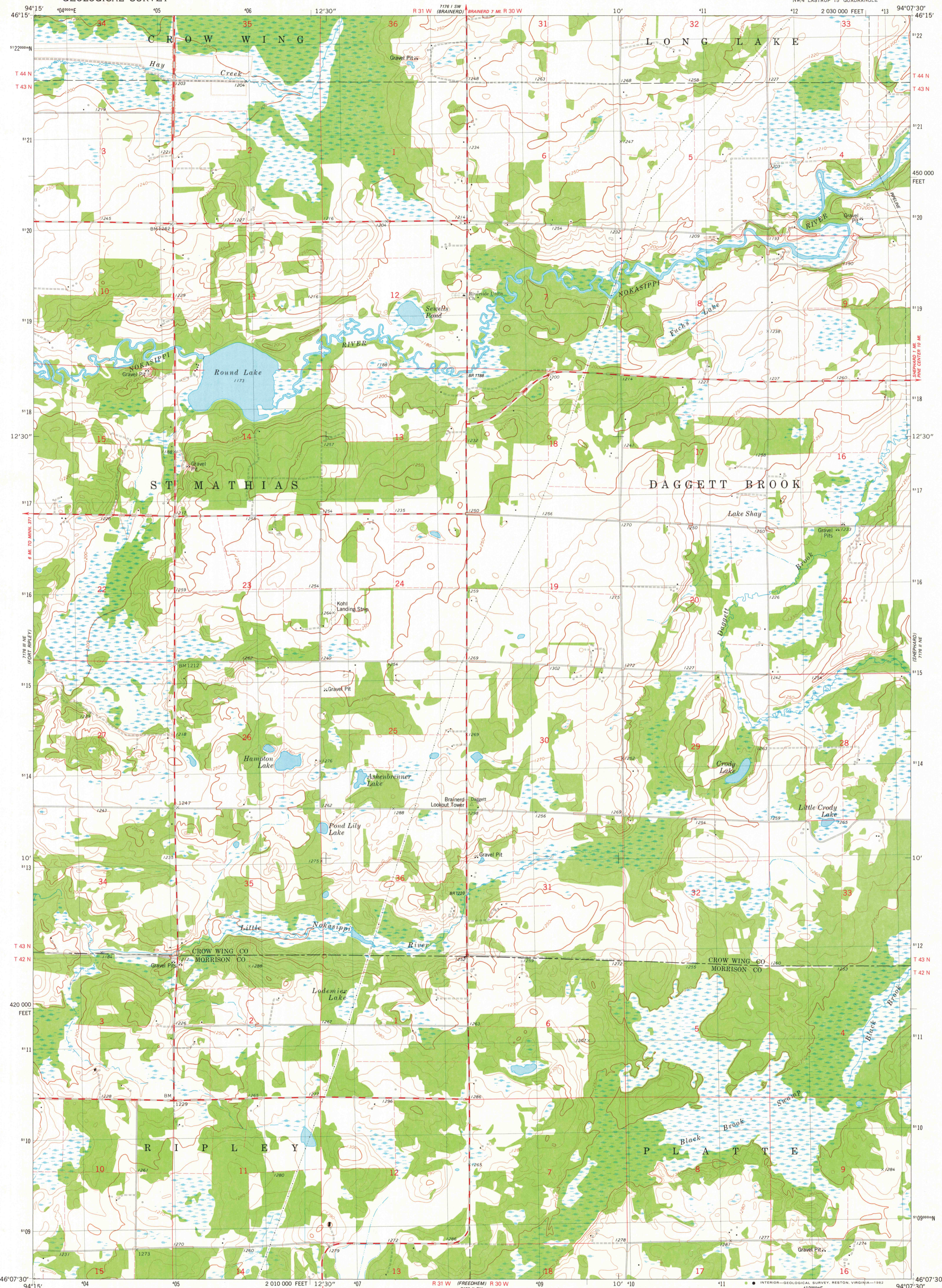


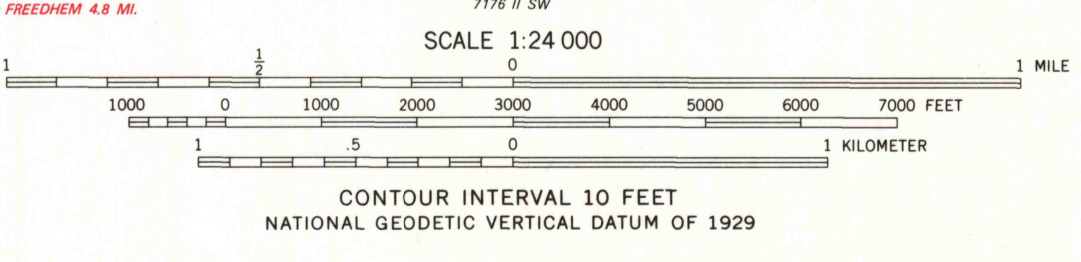
UNITED STATES
DEPARTMENT OF THE INTERIOR
GEOLOGICAL SURVEY

LASTRUP NW QUADRANGLE
MINNESOTA
7.5 MINUTE SERIES (TOPOGRAPHIC)



Mapped, edited, and published by the Geological Survey

Control by USGS and NOS/NOAA
Topography by photogrammetric methods from aerial photographs taken 1977. Field checked 1978. Map edited 1981
Projection and 10,000-foot grid ticks: Minnesota coordinate system, central zone (Lambert conformal conic)
1000-meter Universal Transverse Mercator grid, zone 15
1927 North American Datum
To place on the predicted North American Datum 1983 move the projection lines 7 meters north and 19 meters east as shown by dashed corner ticks
Fine red dashed lines indicate selected fence and field lines where generally visible on aerial photographs
This information is unchecked



ROAD CLASSIFICATION

Primary highway, hard surface	Light-duty road, hard or improved surface
Secondary highway, hard surface	Unimproved road
Interstate Route	U. S. Route
	State Route



LASTRUP NW, MINN.
NW/4 LASTRUP 15' QUADRANGLE
N4607.5-W9407.5/7.5

1981

DMA 7176 II NW-SERIES V872

MAR 22 1982

2150