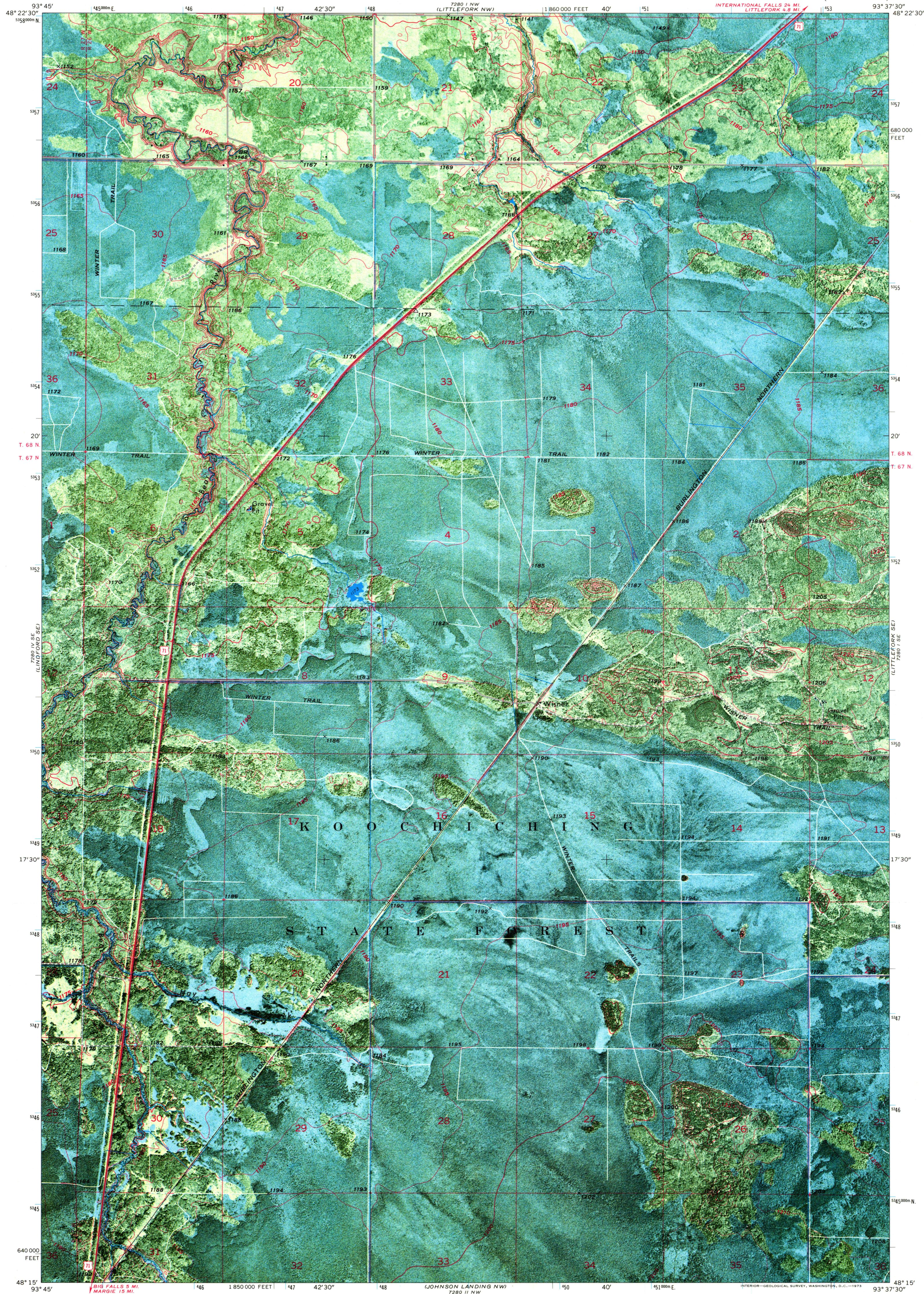
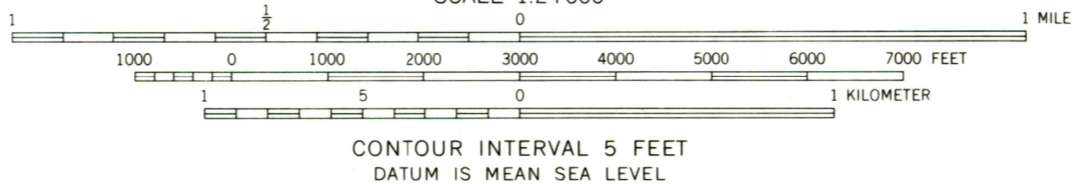
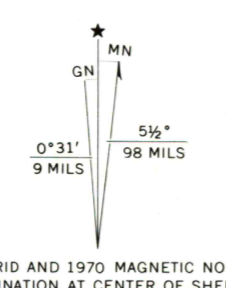


7280 N.W. (LITTLEFORK)

7280 N.E. (LITTLEFORK)



Mapped, edited, and published by the Geological Survey
Control by USGS and USC&GS
Orthophotomap prepared from high-altitude aerial photograph
taken May 22, 1969. Topography by photogrammetric methods
from aerial photographs taken 1970. Field checked 1970
Polyconic projection. 1927 North American datum
10,000-foot grid based on Minnesota coordinate system,
north zone
1000-meter Universal Transverse Mercator grid ticks,
zone 15, shown in blue



CONTOUR INTERVAL 5 FEET
DATUM IS MEAN SEA LEVEL



ROAD CLASSIFICATION	
Primary highway, hard surface	Light-duty road, hard or improved surface
Secondary highway, hard surface	Unimproved road
Interstate Route	U. S. Route
	State Route

THIS MAP COMPLIES WITH NATIONAL MAP ACCURACY STANDARDS
FOR SALE BY U. S. GEOLOGICAL SURVEY, DENVER, COLORADO 80225, OR WASHINGTON, D. C. 20242
A FOLDER DESCRIBING TOPOGRAPHIC MAPS AND SYMBOLS IS AVAILABLE ON REQUEST

USGS
HISTORICAL FILE
TOPOGRAPHIC DIVISION

LITTLEFORK SW, MINN.
N4815—W9337.5/7.5
1970
AMS 7280 1 SW—SERIES V8720

7280 N.W. (LITTLEFORK)
7280 N.E. (LITTLEFORK)
JOHNSON LANDING REC 1 0 1973