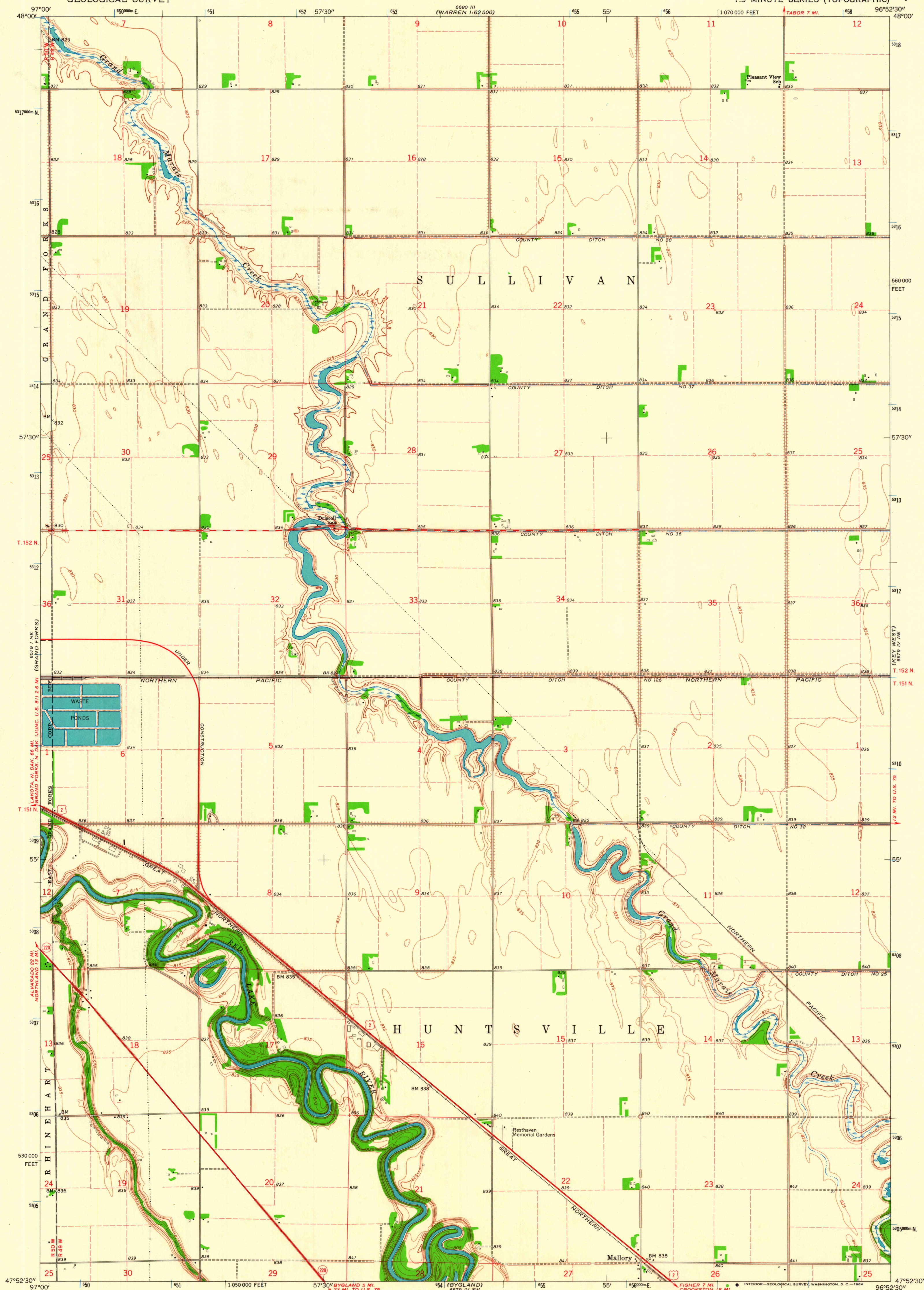


UNITED STATES
DEPARTMENT OF THE INTERIOR
GEOLOGICAL SURVEY

MALLORY QUADRANGLE
MINNESOTA-POLK CO.
7.5 MINUTE SERIES (TOPOGRAPHIC)



Mapped, edited, and published by the Geological Survey

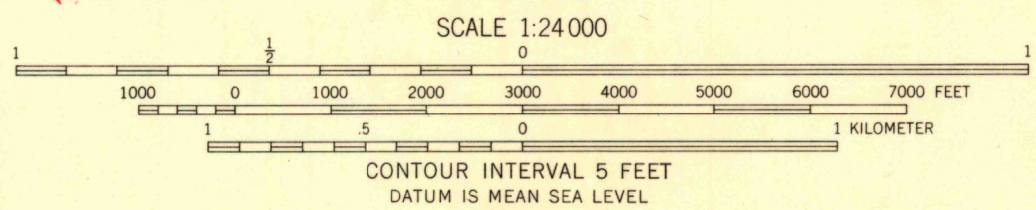
Control by USGS and USC&GS

Planimetry by photogrammetric methods from aerial photographs taken 1961. Topography by planetable surveys 1963

Polyconic projection. 1927 North American datum
10,000-foot grid based on Minnesota coordinate system, north zone
1000-meter Universal Transverse Mercator grid ticks, zone 14, shown in blue

Fine red dashed lines indicate selected fence and field lines where generally visible on aerial photographs.
This information is unchecked

UTM GRID AND 1963 MAGNETIC NORTH
DECLINATION AT CENTER OF SHEET



THIS MAP COMPLIES WITH NATIONAL MAP ACCURACY STANDARDS
FOR SALE BY U. S. GEOLOGICAL SURVEY, DENVER 25, COLORADO OR WASHINGTON 25, D. C.
A FOLDER DESCRIBING TOPOGRAPHIC MAPS AND SYMBOLS IS AVAILABLE ON REQUEST

USGS
Historical File
Topographic Division



ROAD CLASSIFICATION
Heavy-duty ——— Light-duty ———
Medium-duty ——— Unimproved dirt ———
U. S. Route ——— State Route ———

MALLORY, MINN.
N4752.5—W9652.5/7.5

1963

AMS 6679 IV NW—SERIES V872

NOV 23 1964

U.S.G.S.
FILE COPY
TOPOGRAPHIC DIVISION