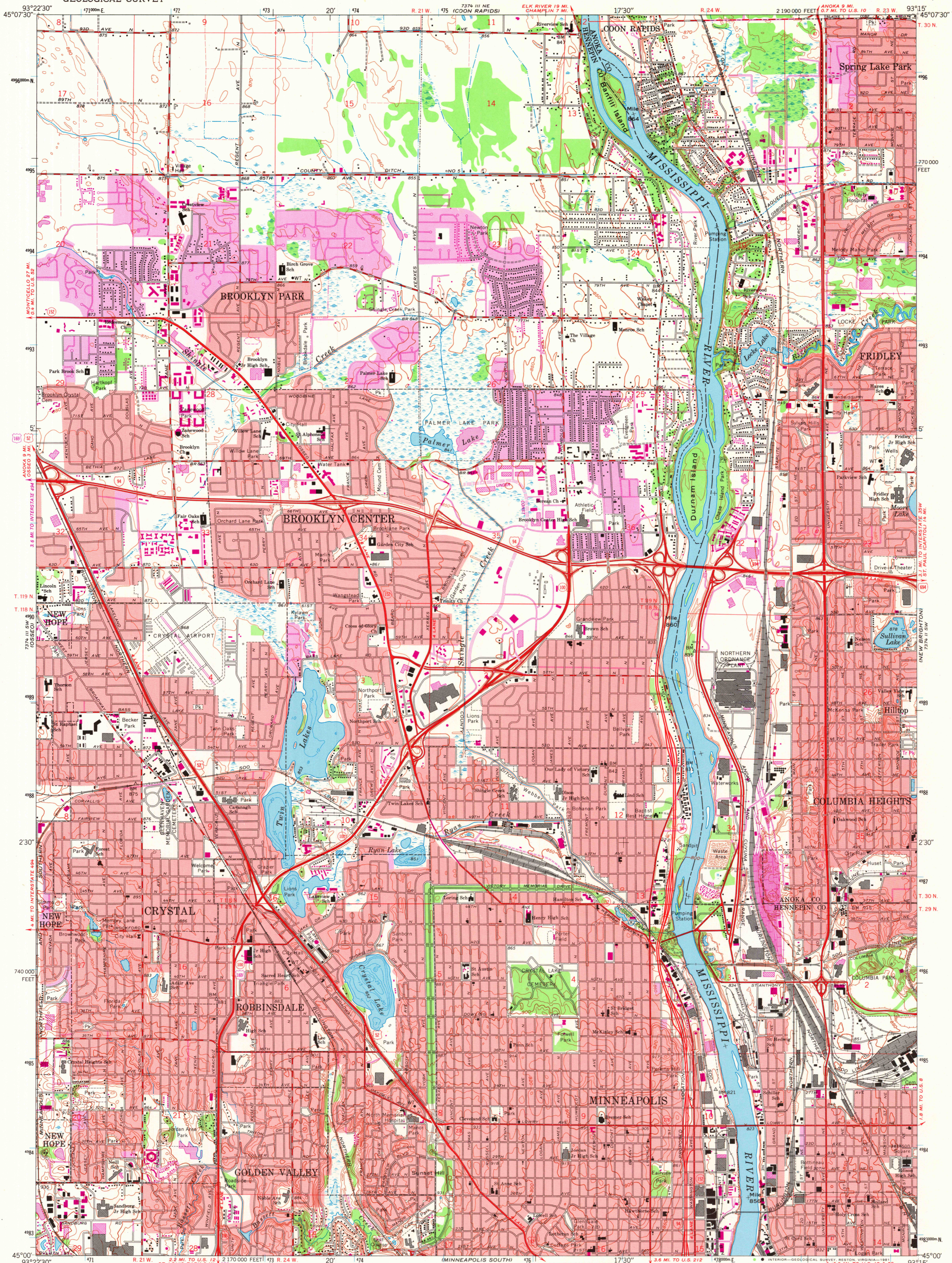


UNITED STATES
DEPARTMENT OF THE INTERIOR
GEOLOGICAL SURVEY

MINNEAPOLIS NORTH QUADRANGLE
MINNESOTA
7.5 MINUTE SERIES (TOPOGRAPHIC)



Mapped, edited, and published by the Geological Survey

Control by USGS, USC&GS, and USCE

Topography by photogrammetric methods from aerial photographs taken 1947. Field checked 1952. Revised from aerial photographs taken 1966. Field checked 1967

Hydrography compiled from information furnished by Minnesota Department of Conservation

Polyconic projection. 1927 North American datum 10,000-foot grid based on Minnesota coordinate system, south zone 1000-meter Universal Transverse Mercator grid ticks, zone 15, shown in blue

To place on the predicted North American Datum 1983 move the projection lines 7 meters north and 17 meters east as shown by dashed corner ticks

Red tint indicates area in which only landmark buildings are shown

SCALE 1:24,000

CONTOUR INTERVAL 10 FEET

NATIONAL GEODETIC VERTICAL DATUM OF 1929

UTM GRID AND 1980 MAGNETIC NORTH DECLINATION AT CENTER OF SHEET

THIS MAP COMPLIES WITH NATIONAL MAP ACCURACY STANDARDS

FOR SALE BY U.S. GEOLOGICAL SURVEY, RESTON, VIRGINIA 22092

A FOLDER DESCRIBING TOPOGRAPHIC MAPS AND SYMBOLS IS AVAILABLE ON REQUEST

Revisions shown in purple compiled from aerial photographs taken 1972 and 1977. Map edited 1980

This information not field checked

Purple tint indicates extension of urban area

ROAD CLASSIFICATION

Heavy-duty ——— Light-duty ———

Medium-duty ——— Unimproved dirt ———

Interstate Route U.S. Route State Route

MINNEAPOLIS NORTH, MINN.

N4500 - W9315/7.5

1967
PHOTOREVISED 1972 AND 1980
DMA 7374 III SE-SERIES V872

USGS
Historical File
National Mapping Division

MAR 25 1981

2200