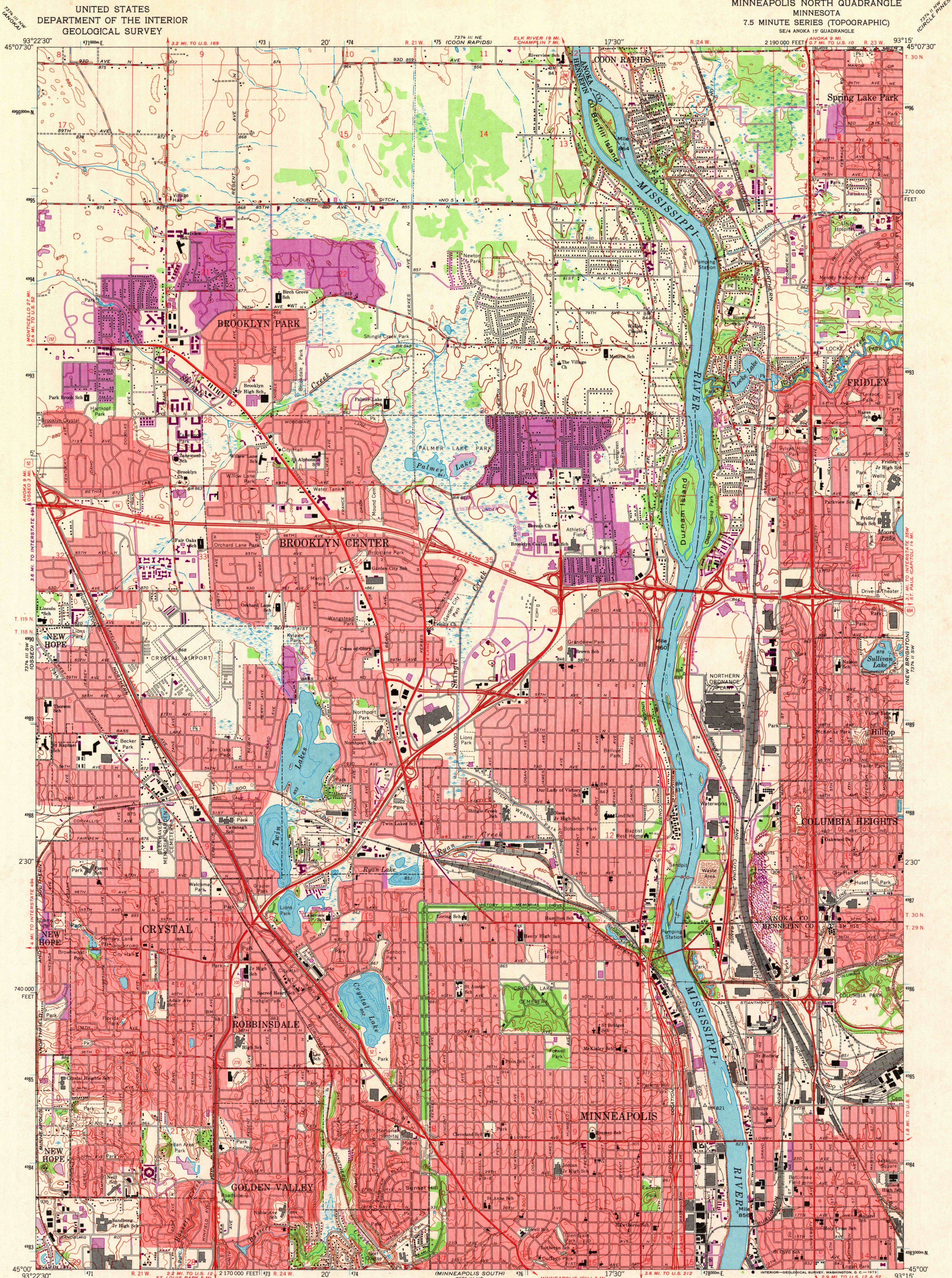
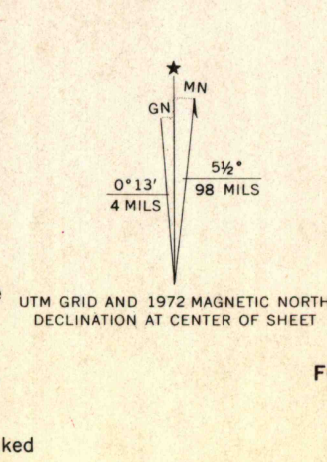


UNITED STATES
DEPARTMENT OF THE INTERIOR
GEOLOGICAL SURVEY

MINNEAPOLIS NORTH QUADRANGLE
MINNESOTA
7.5 MINUTE SERIES (TOPOGRAPHIC)
SE/4 ANOKA 15 QUADRANGLE



Mapped, edited, and published by the Geological Survey
Control by USGS, USCGS, and USCE
Topography by photogrammetric methods from aerial photographs
taken 1947. Field checked 1952. Revised from aerial
photographs taken 1966. Field checked 1967
Hydrography compiled from information furnished by
Minnesota Department of Conservation
Polyconic projection. 1927 North American datum
10,000-foot grid based on Minnesota coordinate system, south zone
1000-meter Universal Transverse Mercator grid ticks,
zone 15, shown in blue
Red tint indicates areas in which only landmark buildings are shown
Fine red dashed lines indicate selected fence and field lines where
generally visible on aerial photographs. This information is unchecked



SCALE 1:24,000
CONTOUR INTERVAL 10 FEET
DATUM IS MEAN SEA LEVEL
THIS MAP COMPLIES WITH NATIONAL MAP ACCURACY STANDARDS
FOR SALE BY U.S. GEOLOGICAL SURVEY, DENVER, COLORADO 80225, OR WASHINGTON, D. C. 20242
A FOLDER DESCRIBING TOPOGRAPHIC MAPS AND SYMBOLS IS AVAILABLE ON REQUEST

MINNEAPOLIS NORTH, MINN.
SE/4 ANOKA 15 QUADRANGLE
N4500 - W9315/7.5
1967
PHOTOREVISED 1972
AMS 7374 III SE-SERIES V872

ROAD CLASSIFICATION
Heavy-duty ——— Light-duty ———
Medium-duty ——— Unimproved dirt ———
Interstate Route U.S. Route State Route
MINN.
QUADRANGLE LOCATION
3895
JUN 25 1973