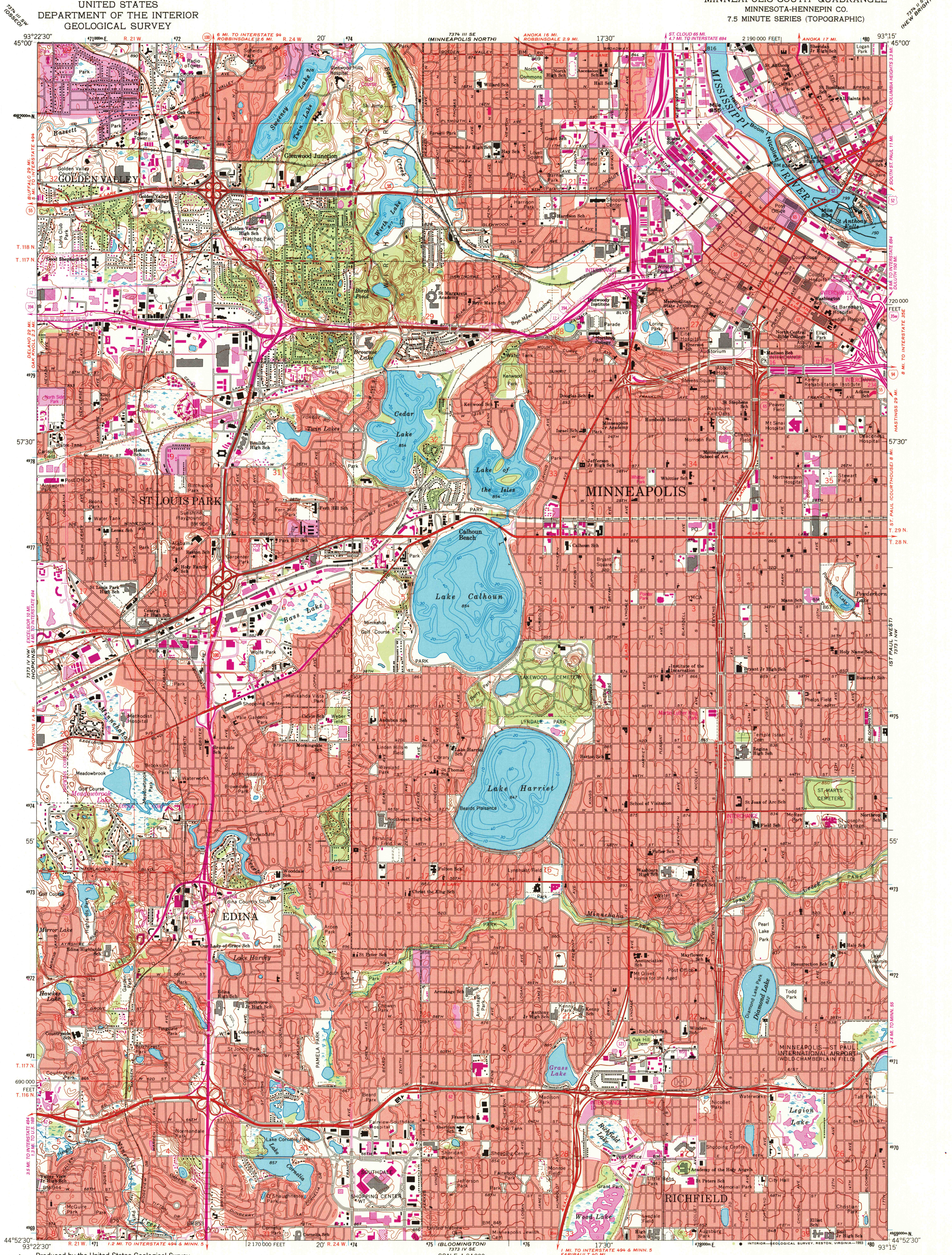


UNITED STATES
DEPARTMENT OF THE INTERIOR
GEOLOGICAL SURVEY

MINNEAPOLIS SOUTH QUADRANGLE
MINNESOTA-HENNEPIN CO.
7.5 MINUTE SERIES (TOPOGRAPHIC)



Produced by the United States Geological Survey

Control by USGS, NOS/NOAA and USCE

Topography by photogrammetric methods from aerial photographs taken 1947. Field checked 1952. Revised from aerial photographs taken 1966. Field checked 1967. Map edited 1967

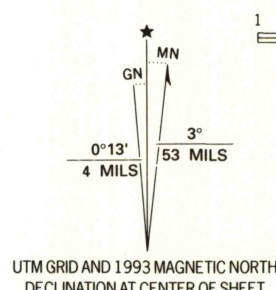
Hydrography compiled from information furnished by Minnesota Department of Natural Resources

Projection and 10,000-foot grid ticks: Minnesota coordinate system, south zone (Lambert conformal conic)
1000-meter Universal Transverse Mercator grid ticks, zone 15, shown in blue
1927 North American Datum (NAD 27)

North American Datum of 1983 (NAD 83) is shown by dashed corner ticks

The values of the shift between NAD 27 and NAD 83 for 7.5-minute intersections are given in USGS Bulletin 1875

Red tint indicates areas in which only landmark buildings are shown



THIS MAP COMPLIES WITH NATIONAL MAP ACCURACY STANDARDS

FOR SALE BY U.S. GEOLOGICAL SURVEY

DENVER, COLORADO 80225, OR RESTON, VIRGINIA 22092

A FOLDER DESCRIBING TOPOGRAPHIC MAPS AND SYMBOLS IS AVAILABLE ON REQUEST

Revisions shown in purple and woodland compiled in cooperation with State of Minnesota agencies from aerial photographs taken 1991 and other sources. This information not field checked. Map edited 1993

ROAD CLASSIFICATION

Heavy-duty ——— Light-duty ———
Medium-duty ——— Unimproved dirt ———
Interstate Route U.S. Route State Route

MINNEAPOLIS SOUTH, MINN.
44093-H3-TF-024

1967
REVISED 1993
DMA 7373 IV NE-SERIES V872

