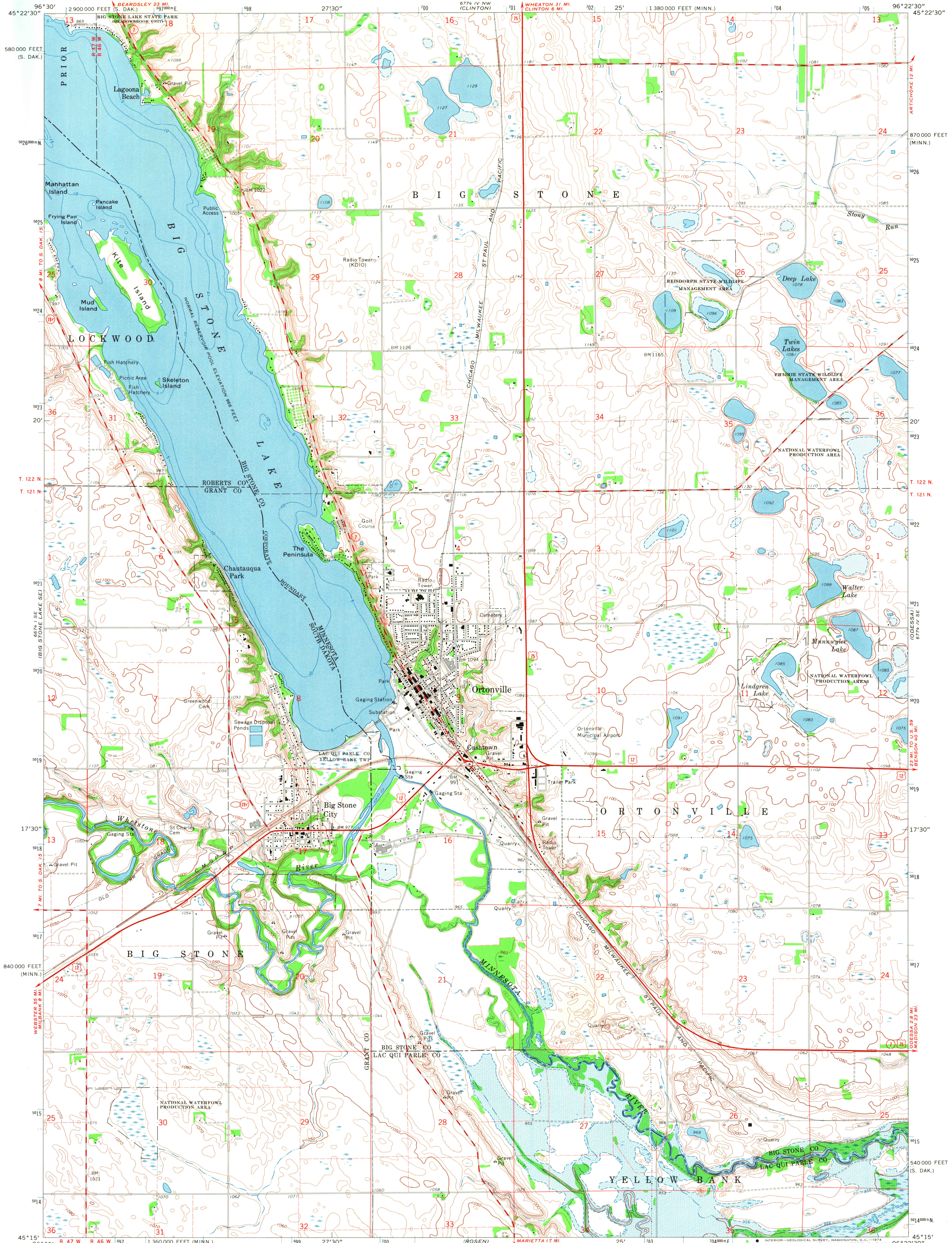


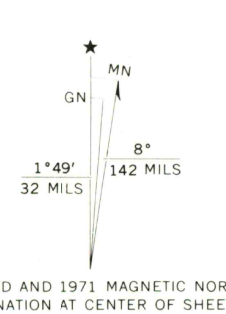
UNITED STATES  
DEPARTMENT OF THE INTERIOR  
GEOLOGICAL SURVEY

ORTONVILLE QUADRANGLE  
MINNESOTA-SOUTH DAKOTA  
7.5 MINUTE SERIES (TOPOGRAPHIC)  
SW 1/4 ORTONVILLE 15' QUADRANGLE

67° 14' NE  
18° 15' SW  
105° 22' 30" W



Maped, edited, and published by the Geological Survey  
Control by USGS, USCGS and Minnesota Highway Department  
Topography by photogrammetric methods from aerial  
photographs taken 1971. Field checked 1971  
Hydrography compiled from information furnished by  
Minnesota Department of Conservation  
Projection: Minnesota coordinate system, south zone  
(Lambert conformal conic)  
10,000-foot grid ticks based on Minnesota coordinate  
system, south zone, and South Dakota coordinate system, north zone  
1000-meter Universal Transverse Mercator grid ticks,  
zone 14, shown in blue. 1927 North American datum  
Blue hatching indicates area to be submerged by Highway 75 Dam  
Areas covered by dashed light-blue pattern  
are subject to controlled inundation  
Fine red dashed lines indicate selected fence and field lines where  
generally visible on aerial photographs. This information is unchecked



THIS MAP COMPLIES WITH NATIONAL MAP ACCURACY STANDARDS  
FOR SALE BY U. S. GEOLOGICAL SURVEY, DENVER, COLORADO 80225, OR WASHINGTON, D. C. 20242  
A FOLDER DESCRIBING TOPOGRAPHIC MAPS AND SYMBOLS IS AVAILABLE ON REQUEST

ROAD CLASSIFICATION  
Primary highway, hard surface  
Secondary highway, hard surface  
Unimproved road  
Interstate Route  
U. S. Route  
State Route  
ORTONVILLE, MINN.-S. DAK.  
SW 1/4 ORTONVILLE 15' QUADRANGLE  
N4515-W9622.5/7.5  
1971  
AMS 6774 IV SW-SERIES V872

USGS  
Historical File  
Topographic Division  
2720