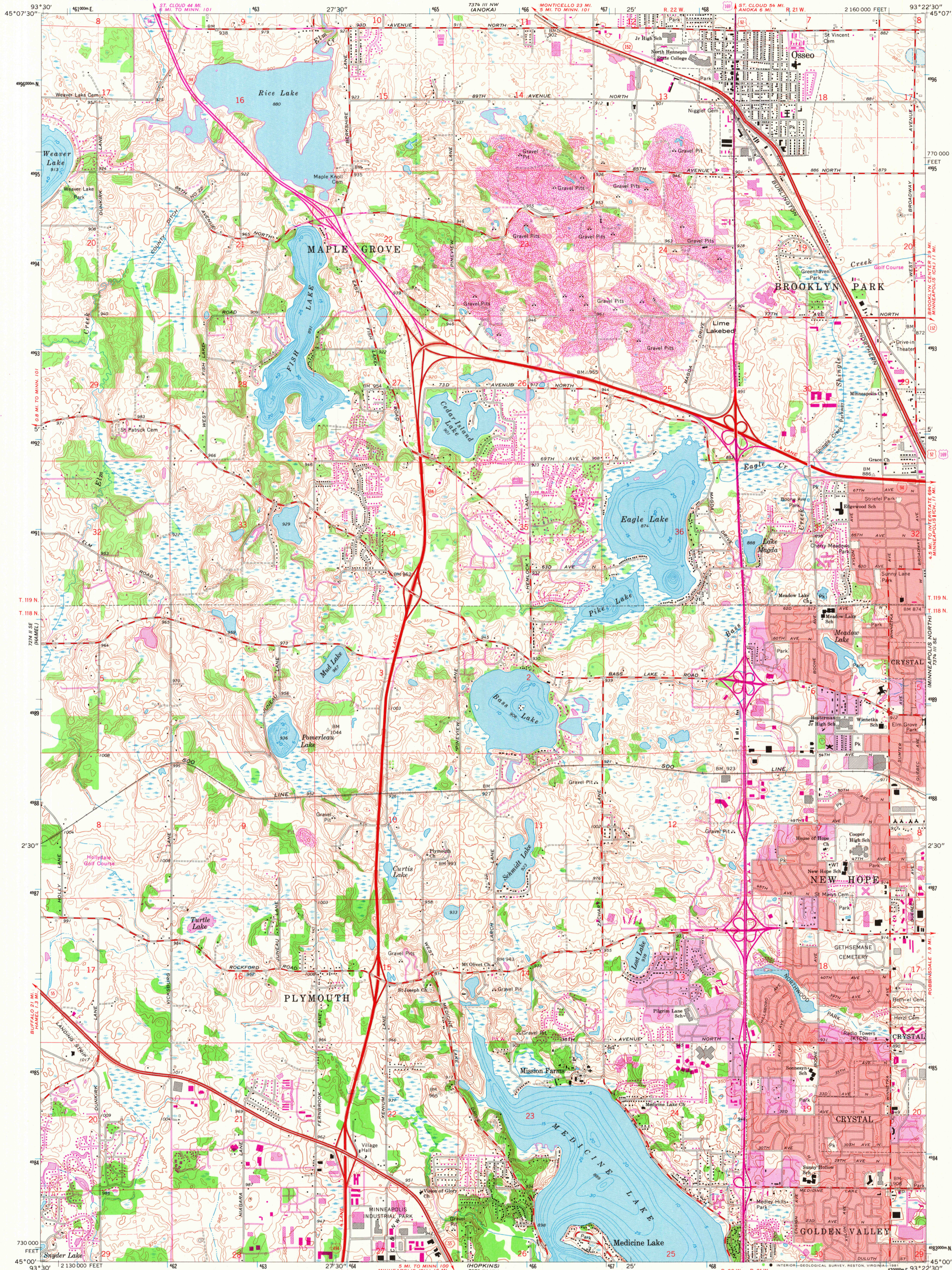


UNITED STATES  
DEPARTMENT OF THE INTERIOR  
GEOLOGICAL SURVEY

OSSEO QUADRANGLE  
MINNESOTA—HENNEPIN CO.  
7.5 MINUTE SERIES (TOPOGRAPHIC)



Maped, edited, and published by the Geological Survey  
Control by USGS, USC&GS

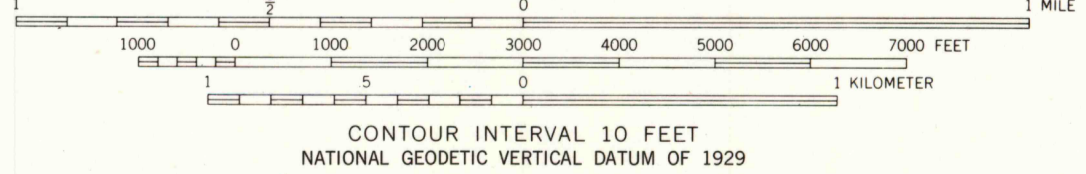
Topography by photogrammetric methods from aerial photographs  
taken 1947. Field checked 1955. Revised from aerial  
photographs taken 1966. Field checked 1967

Hydrography compiled from information furnished by  
Minnesota Department of Conservation

Polyconic projection. 1927 North American datum  
10,000-foot grid based on Minnesota coordinate system, south zone  
1000-meter Universal Transverse Mercator grid ticks,  
zone 15, shown in blue

Red tint indicates areas in which only landmark buildings are shown

To place on the predicted North American Datum 1983  
move the projection lines 7 meters north and  
18 meters east as shown by dashed corner ticks



CONTOUR INTERVAL 10 FEET  
NATIONAL GEODETIC VERTICAL DATUM OF 1929

THIS MAP COMPLIES WITH NATIONAL MAP ACCURACY STANDARDS  
FOR SALE BY U. S. GEOLOGICAL SURVEY, RESTON, VIRGINIA 22092  
A FOLDER DESCRIBING TOPOGRAPHIC MAPS AND SYMBOLS IS AVAILABLE ON REQUEST

ROAD CLASSIFICATION  
Heavy-duty ——— Light-duty ———  
Medium-duty ——— Unimproved dirt ———  
Interstate Route U. S. Route State Route



USGS  
Historical File  
Topographic Division

OSSEO, MINN.  
N4500—W9322.5/7.5

1967  
PHOTOREVISED 1972 AND 1980  
DMA 7374 III SW—SERIES V872

Revisions shown in purple compiled from aerial  
photographs taken 1972 and 1977. Map edited 1980  
This information not field checked  
Purple tint indicates extension of urban area

JAN 29 1981

2200