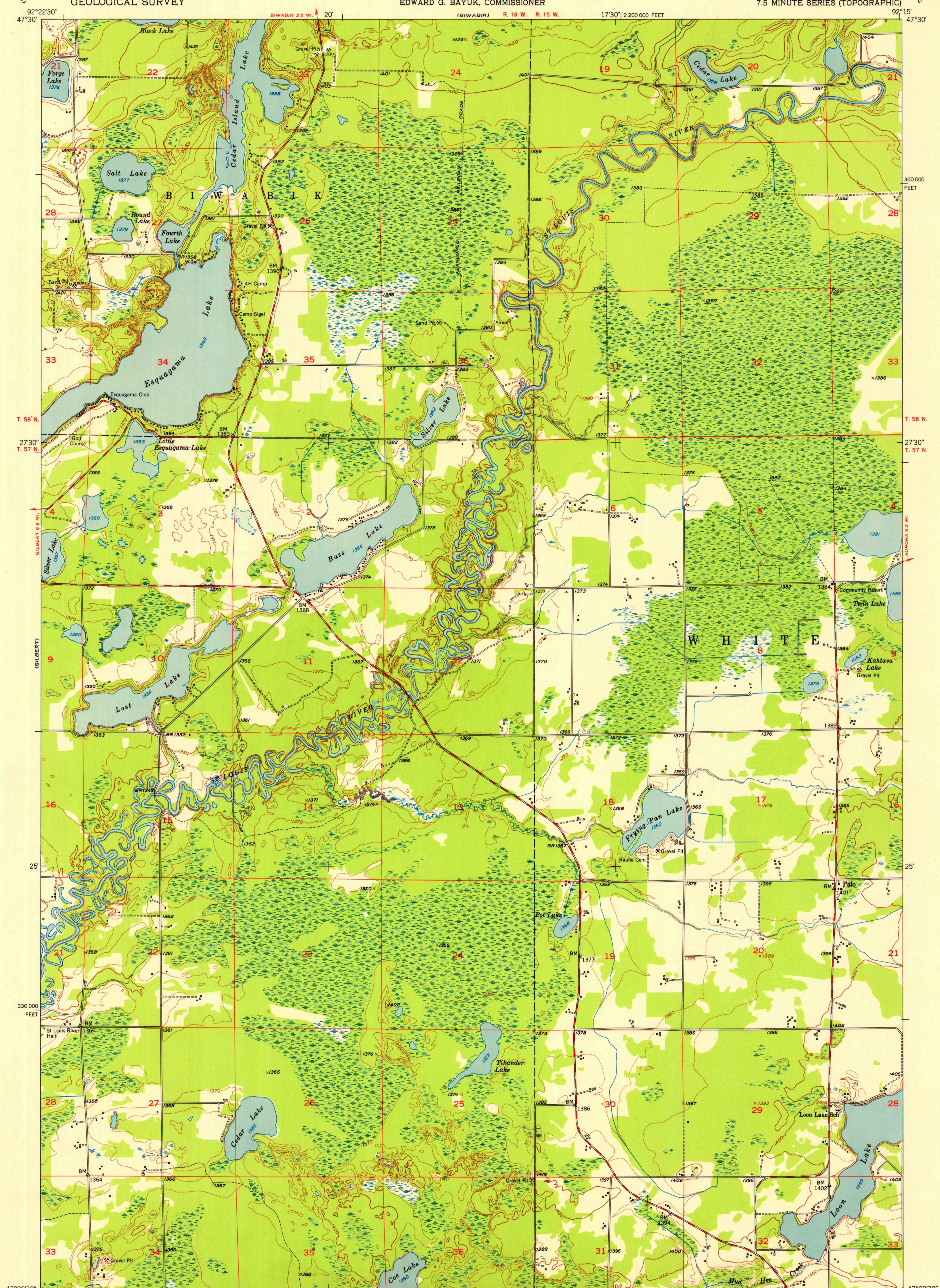


U.S.G.S.
FILE COPY
IMPROVED AND MATING.

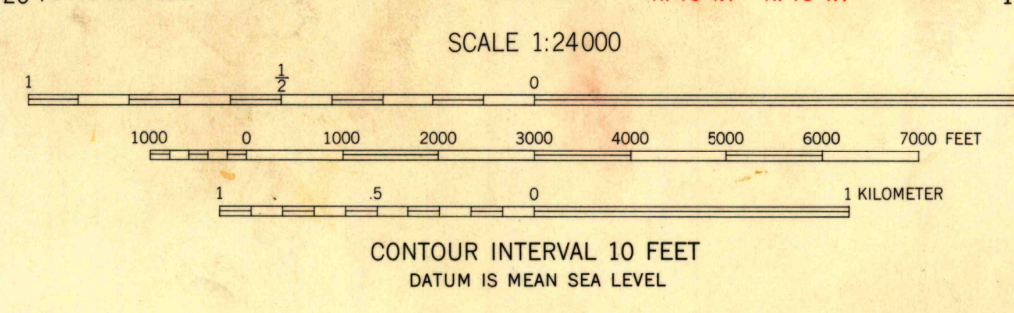


U.S.G.S.
FILE COPY
IMPROVED AND MATING.

Mapped, edited, and published by the Geological Survey
Control by USGS and USC&GS
Topography from aerial photographs by Kelsh plotter
Aerial photographs taken 1950. Field check 1951
Polyconic projection. 1927 North American datum
10,000-foot grid based on Minnesota coordinate system,
north zone
Unchecked elevations are shown in brown

45°
TRUE NORTH
MAGNETIC NORTH

APPROXIMATE MEAN
DECLINATION, 1991



THIS MAP COMPLIES WITH NATIONAL MAP ACCURACY STANDARDS
FOR SALE BY U. S. GEOLOGICAL SURVEY, FEDERAL CENTER, DENVER, COLORADO OR WASHINGTON 25, D. C.
A FOLDER DESCRIBING TOPOGRAPHIC MAPS AND SYMBOLS IS AVAILABLE ON REQUEST

ROAD CLASSIFICATION

Heavy-duty	4 LANE 16 LANE	Light-duty
Medium-duty	4 LANE 16 LANE	Unimproved dirt

U. S. Route (red line with shield)
State Route (black line with circle)

USGS
Historical File
Topographic Division
FILE COPY
IMPROVED AND MATING.

PALO, MINN.
N4722.5-W9215/7.5
1951