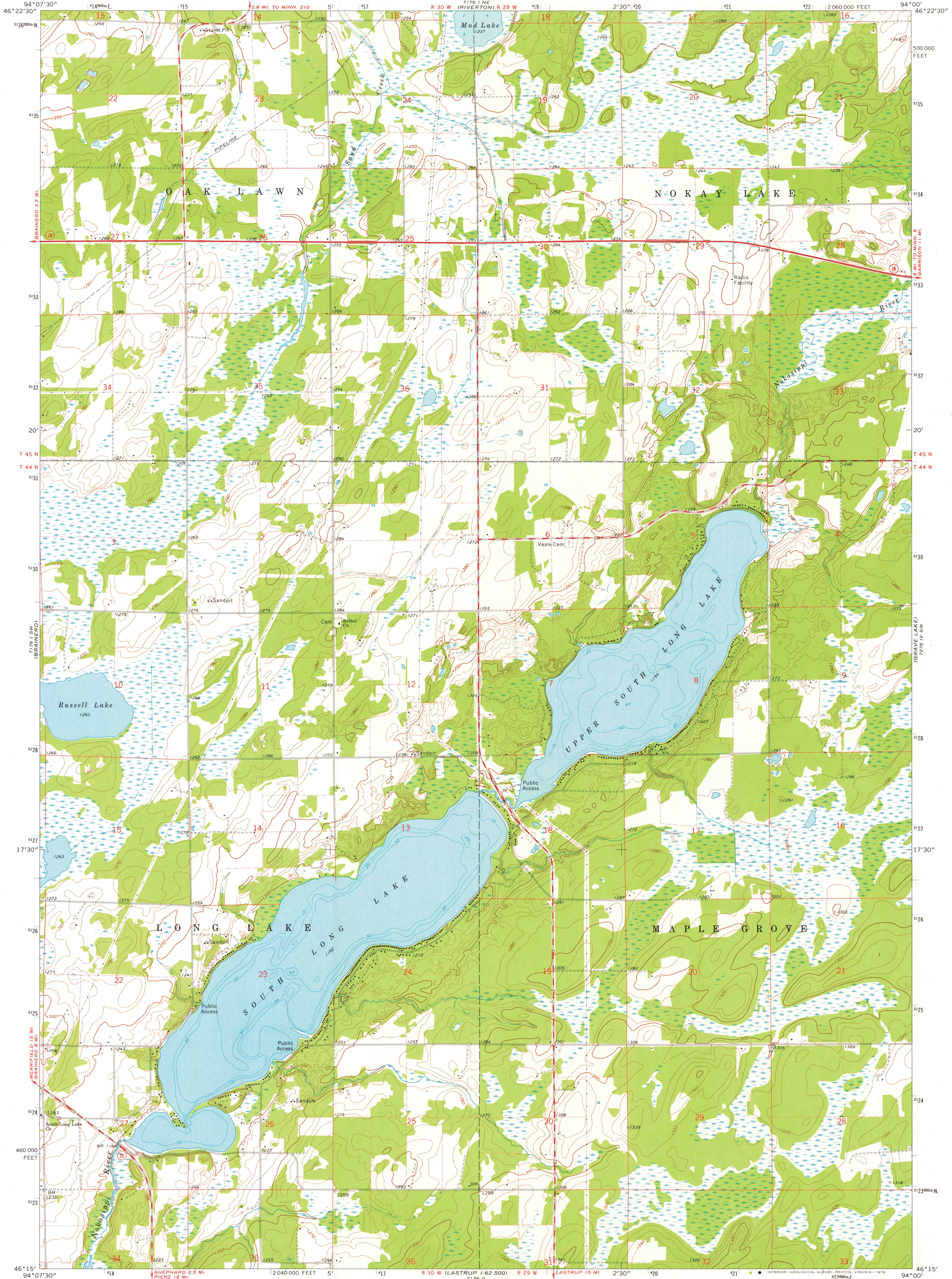


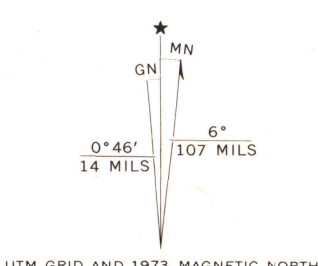
UNITED STATES
DEPARTMENT OF THE INTERIOR
GEOLOGICAL SURVEY

STATE OF MINNESOTA
DEPARTMENT OF ADMINISTRATION

SOUTH LONG LAKE QUADRANGLE
MINNESOTA—CROW WING CO.
7.5 MINUTE SERIES (TOPOGRAPHIC)
SE/4 BRAINERD 15' QUADRANGLE



Mapped, edited, and published by the Geological Survey
Control by USGS and NOS/NOAA
Topography by photogrammetric methods from aerial
photographs taken 1973. Field checked 1973
Hydrography compiled from information furnished by
Minnesota Department of Natural Resources
Projection and 10,000-foot grid ticks: Minnesota coordinate
system, central zone (Lambert conformal conic)
1000-metre Universal Transverse Mercator grid ticks,
zone 15, shown in blue. 1927 North American datum
Fine red dashed lines indicate selected fence and field lines
where generally visible on aerial photographs
This information is unchecked



SCALE 1:24 000
CONTOUR INTERVAL 10 FEET
NATIONAL GEODETIC VERTICAL DATUM OF 1929



ROAD CLASSIFICATION
Primary highway, hard surface
Secondary highway, hard surface
Unimproved road
Interstate Route
U.S. Route
State Route

SOUTH LONG LAKE, MINN.
SE/4 BRAINERD 15' QUADRANGLE
N4615-W9400/7.5

1973

AMS 7176 I SE-SERIES V872

University of Wisconsin

APR 24 1976

MAP AND AIR PHOTO