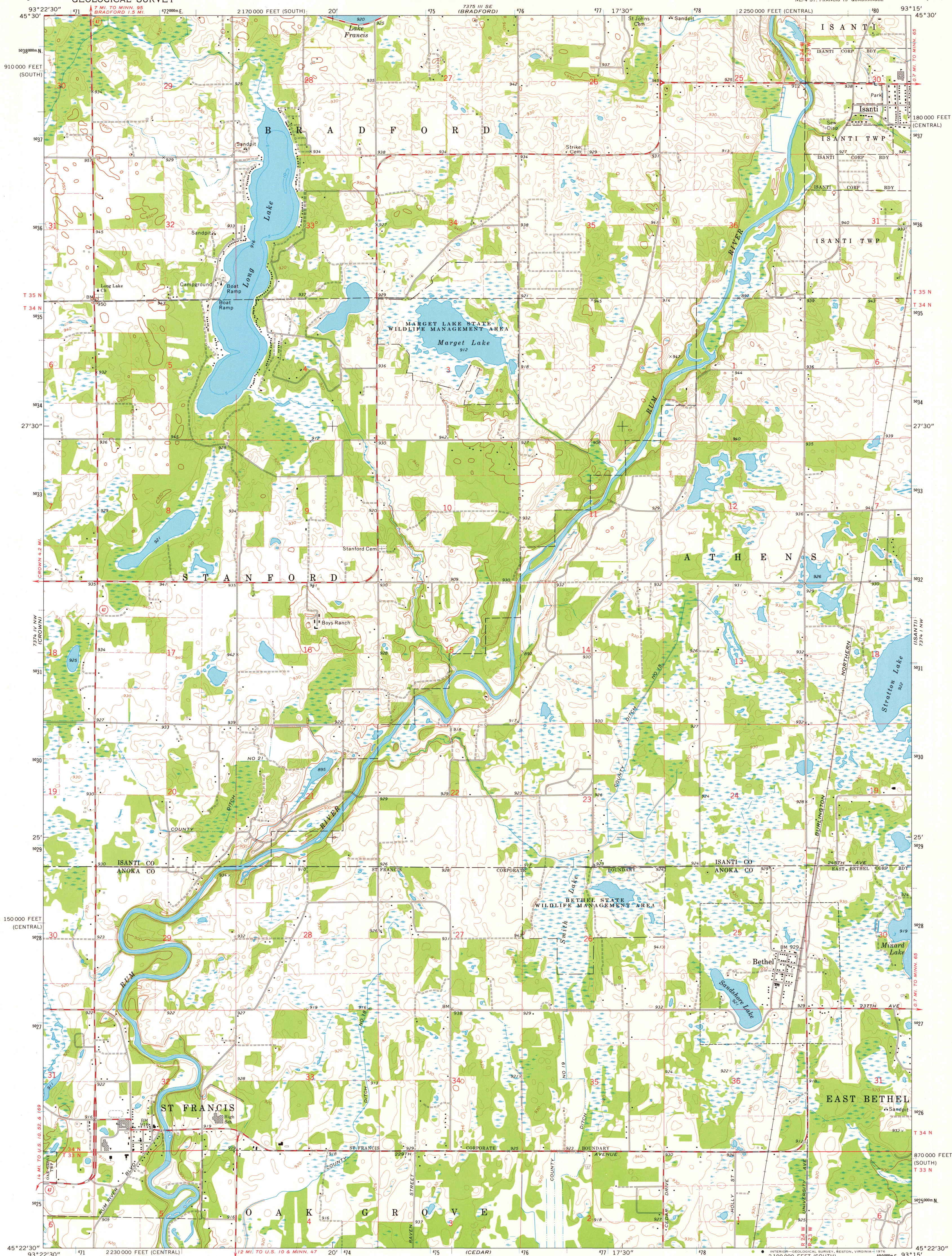


UNITED STATES
DEPARTMENT OF THE INTERIOR
GEOLOGICAL SURVEY

STATE OF MINNESOTA
DEPARTMENT OF ADMINISTRATION

ST. FRANCIS QUADRANGLE
MINNESOTA
7.5 MINUTE SERIES (TOPOGRAPHIC)

7375 IV NE-162 5000
(CAMBRIDGE 1:62 5000)

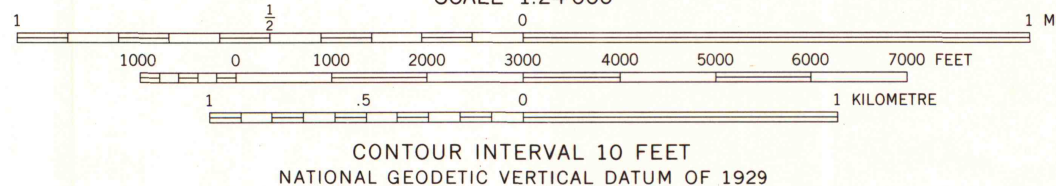
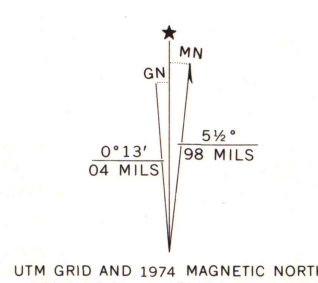


MAP AND AIR PHOTO
LIBRARY

JAN 18 1977

University of Wisconsin
Madison

Mapped, edited, and published by the Geological Survey
Control by USGS and NOS/NOAA
Topography by photogrammetric methods from aerial
photographs taken 1973. Field checked 1974
Hydrography compiled from information furnished
by Minnesota Department of Natural Resources
Projection: Minnesota coordinate system, central zone
(Lambert conformal conic)
10,000-foot grid ticks based on Minnesota coordinate
system, central and south zones
1000-metre Universal Transverse Mercator grid ticks,
zone 15, shown in blue. 1927 North American datum
Fine red dashed lines indicate selected fence and field lines
where generally visible on aerial photographs
This information is unchecked



THIS MAP COMPLIES WITH NATIONAL MAP ACCURACY STANDARDS
FOR SALE BY U. S. GEOLOGICAL SURVEY, RESTON, VIRGINIA 22092
A FOLDER DESCRIBING TOPOGRAPHIC MAPS AND SYMBOLS IS AVAILABLE ON REQUEST



ROAD CLASSIFICATION
Primary highway, hard surface
Secondary highway, hard surface
Light-duty road, hard or improved surface
Unimproved road
Interstate Route
U. S. Route
State Route

ST. FRANCIS, MINN.
NE/4 ST. FRANCIS 15' QUADRANGLE
N4522.5-W9315.7/5

1974

AMS 7374 IV NE-SERIES V872