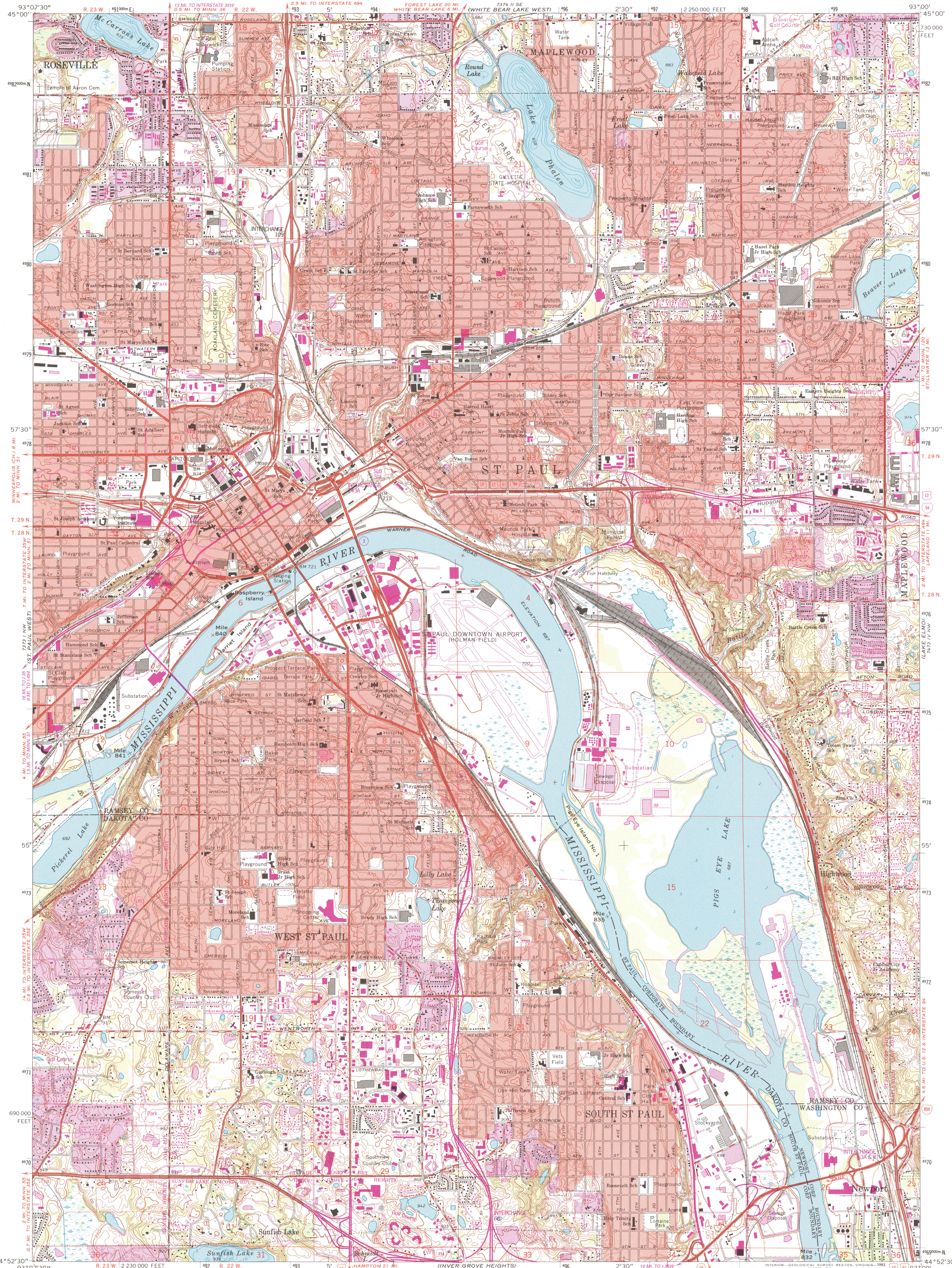
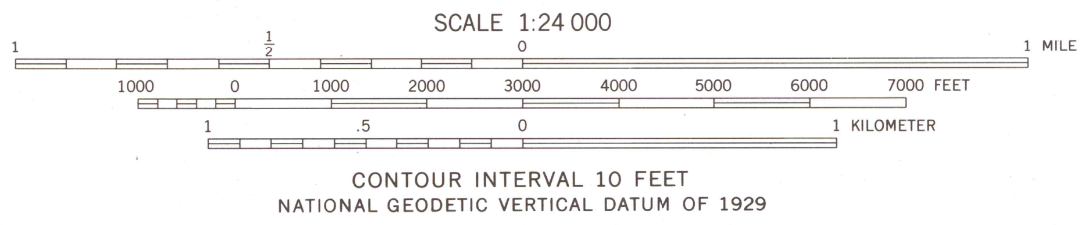


UNITED STATES
DEPARTMENT OF THE INTERIOR
GEOLOGICAL SURVEY

ST. PAUL EAST QUADRANGLE
MINNESOTA
7.5 MINUTE SERIES (TOPOGRAPHIC)
NE/4 ST. PAUL 15' QUADRANGLE



Produced by the United States Geological Survey
Control by USGS, NOS/NOAA and USCE
Topography by photogrammetric methods from aerial photographs
taken 1947. Field checked 1951. Revised from aerial photographs
taken 1966. Field checked 1967. Map edited 1967
Hydrography compiled from information furnished by
Minnesota Department of Conservation
Projection and 10,000-foot grid ticks: Minnesota coordinate
system, south zone (Lambert conformal conic)
1000-meter Universal Transverse Mercator grid ticks, zone 15, shown in blue
1927 North American Datum (NAD 27)
North American Datum of 1983 (NAD 83) is shown by dashed corner ticks
The values of the shift between NAD 27 and NAD 83 for 7.5-minute
intersections are given in USGS Bulletin 1875
Red tint indicates areas in which only landmark buildings are shown



ROAD CLASSIFICATION
Heavy-duty ——— Light-duty ———
Medium-duty ——— Unimproved dirt ———
Interstate Route U.S. Route State Route



ST. PAUL EAST QUADRANGLE
NE/4 ST. PAUL 15' QUADRANGLE
44093-H1-TF-024

THIS MAP COMPLIES WITH NATIONAL MAP ACCURACY STANDARDS
FOR SALE BY U.S. GEOLOGICAL SURVEY
DENVER, COLORADO 80225, OR RESTON, VIRGINIA 22092
A FOLDER DESCRIBING TOPOGRAPHIC MAPS AND SYMBOLS IS AVAILABLE ON REQUEST

Revisions shown in purple and woodland compiled in cooperation with
State of Minnesota agencies from aerial photographs taken 1991
and other sources. Contours not revised. This information
not field checked. Map edited 1993
Purple tint indicates extension of urban areas

1967
REVISED 1993
DMA 7373 1 NE—SERIES V872

RECEIVED
JUL 31 1999
USGS MIND
HISTORICAL MAP ARCHIVES

