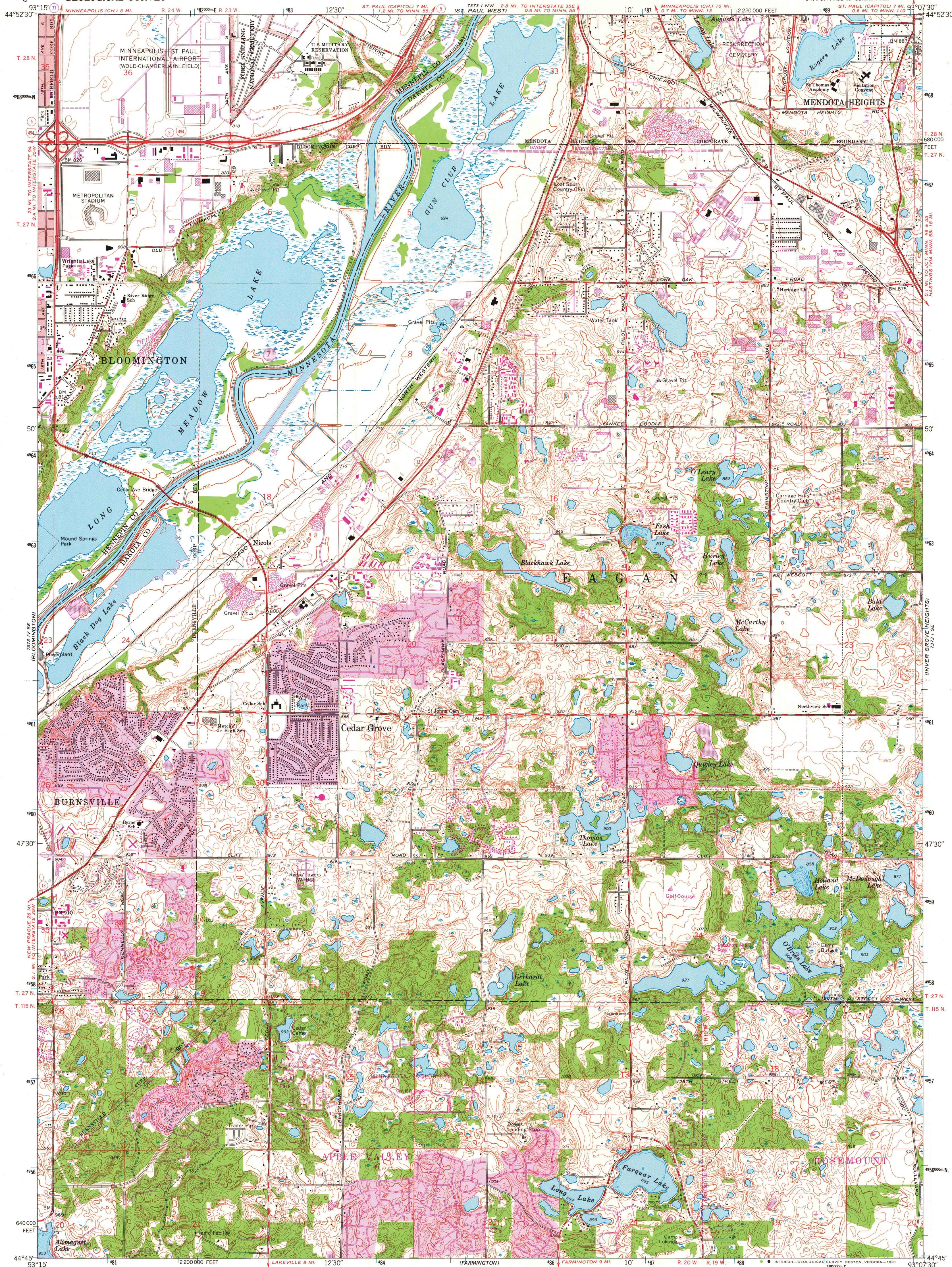


UNITED STATES
DEPARTMENT OF THE INTERIOR
GEOLOGICAL SURVEY

ST. PAUL SW QUADRANGLE
MINNESOTA
7.5 MINUTE SERIES (TOPOGRAPHIC)

SW 1/4 ST. PAUL 15' QUADRANGLE

ST. PAUL 15' NE EAST 11



Mapped, edited, and published by the Geological Survey

Control by USGS and USC&GS

Topography by photogrammetric methods from aerial photographs taken 1947 and planimetric surveys 1951. Revision from aerial photographs taken 1966. Field checked 1967

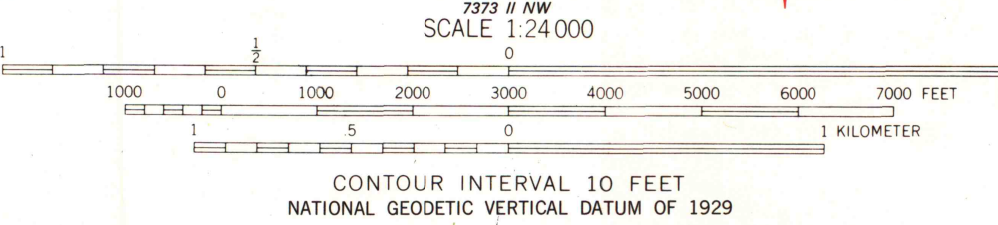
Hydrography compiled from information furnished by Minnesota Department of Conservation

Polyconic projection. 1927 North American datum 10,000-foot grid based on Minnesota coordinate system, south zone 1000-meter Universal Transverse Mercator grid ticks, zone 15, shown in blue

Red tint indicates areas in which only landmark buildings are shown. Dotted land lines established by private survey

To place on the predicted North American Datum 1983 move the projection lines 7 meters north and 17 meters east as shown by dashed corner ticks

There may be private inholdings within the boundaries of the National or State reservations shown on this map



THIS MAP COMPLIES WITH NATIONAL MAP ACCURACY STANDARDS FOR SALES BY U.S. GEOLOGICAL SURVEY, RESTON, VIRGINIA 22092

A FOLDER DESCRIBING TOPOGRAPHIC MAPS AND SYMBOLS IS AVAILABLE ON REQUEST

Revisions shown in purple compiled from aerial photographs taken 1972 and 1977. Map edited 1980. This information not field checked. Purple tint indicates extension of urban area



ROAD CLASSIFICATION	
Primary highway, hard surface	Light-duty road, hard or improved surface
Secondary highway, hard surface	Unimproved road
Interstate Route	U. S. Route
	State Route

ST. PAUL SW, MINN.
SW 1/4 ST. PAUL 15' QUADRANGLE
N4445—W9307.5/7.5

1967
PHOTOREVISED 1972 AND 1980
DMA 7373 1 SW—SERIES V872

MAP AND AIR PHOTO LIBRARY

JUN 15 1981

University of Wisconsin
Madison