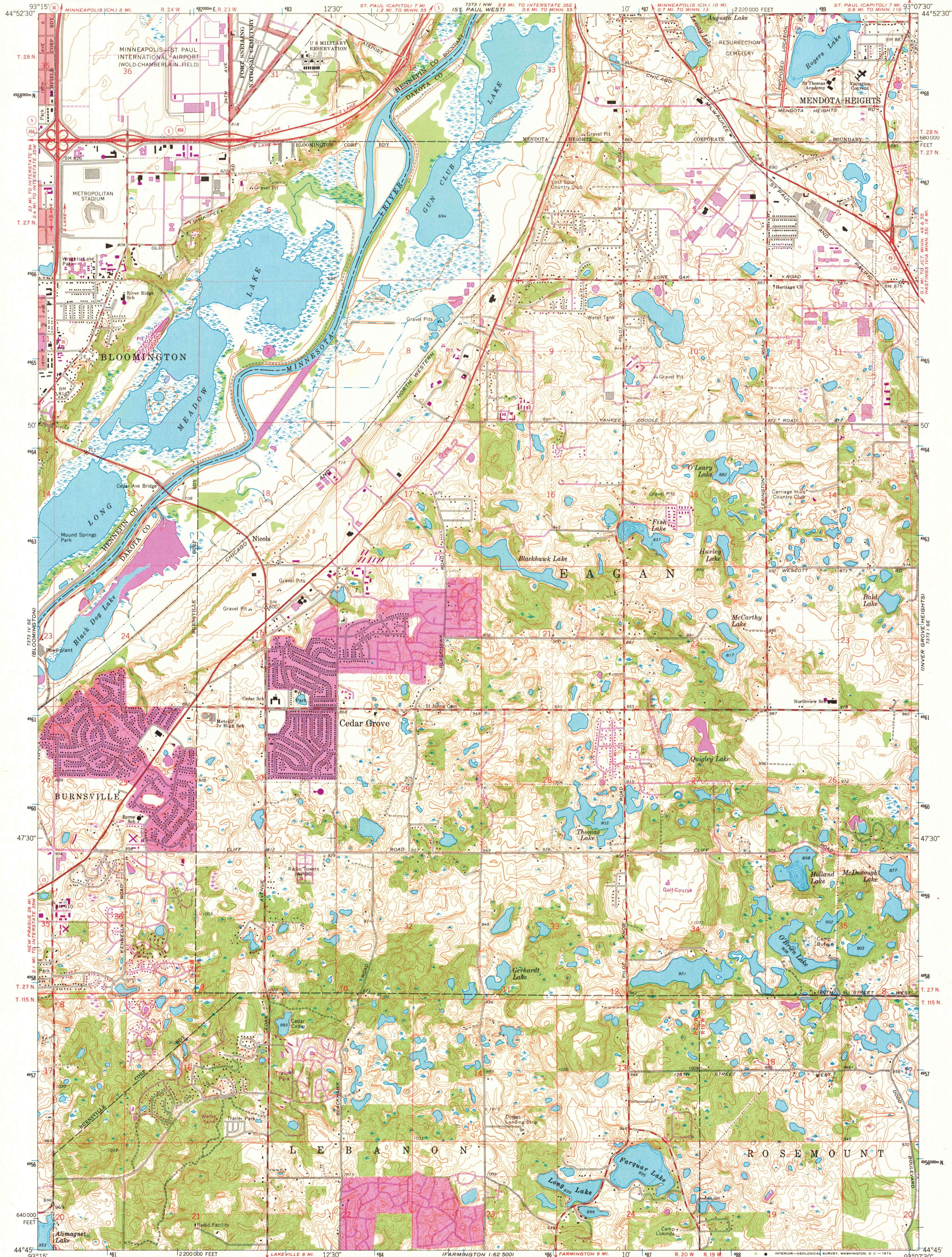


UNITED STATES
DEPARTMENT OF THE INTERIOR
GEOLOGICAL SURVEY

ST. PAUL SW QUADRANGLE
MINNESOTA
7.5 MINUTE SERIES (TOPOGRAPHIC)
SW/4 ST. PAUL 15' QUADRANGLE



Mapped, edited, and published by the Geological Survey

Control by USGS and USC&GS

Topography by photogrammetric methods from aerial photographs taken 1947 and planetable surveys 1951. Revision from aerial photographs taken 1966. Field checked 1967

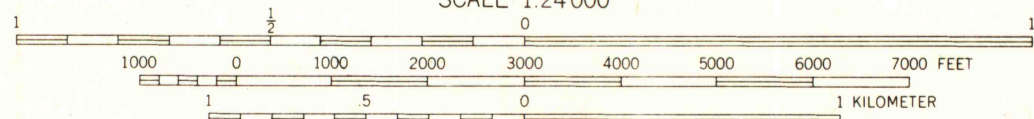
Hydrography compiled from information furnished by Minnesota Department of Conservation

Polyconic projection. 1927 North American datum
10,000-foot grid based on Minnesota coordinate system, south zone
1000-meter Universal Transverse Mercator grid ticks, zone 15, shown in blue

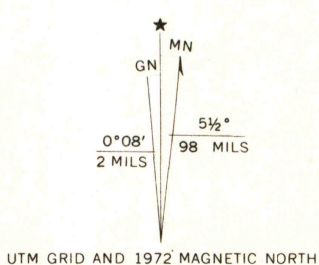
Red tint indicates areas in which only landmark buildings are shown
Dotted land lines established by private survey

Fine red dashed lines indicate selected fence and field lines where generally visible on aerial photographs. This information is unchecked

SCALE 1:24,000



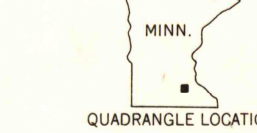
CONTOUR INTERVAL 10 FEET
DATUM IS MEAN SEA LEVEL



UTM GRID AND 1972 MAGNETIC NORTH DECLINATION AT CENTER OF SHEET

THIS MAP COMPLIES WITH NATIONAL MAP ACCURACY STANDARDS
FOR SALE BY U. S. GEOLOGICAL SURVEY, DENVER, COLORADO 80225, OR WASHINGTON, D. C. 20242
A FOLDER DESCRIBING TOPOGRAPHIC MAPS AND SYMBOLS IS AVAILABLE ON REQUEST

ROAD CLASSIFICATION	
Heavy-duty	Light-duty
Medium-duty	Unimproved dirt
Interstate Route	State Route



QUADRANGLE LOCATION

ST. PAUL SW, MINN.
SW/4 ST. PAUL 15' QUADRANGLE
N4445-W9307.5/7.5

1967
PHOTOREVISED 1972
AMS 7373 I SW-SERIES V872

MAP AND AIR PHOTO LIBRARY

OCT 10 1973

University of Wisconsin