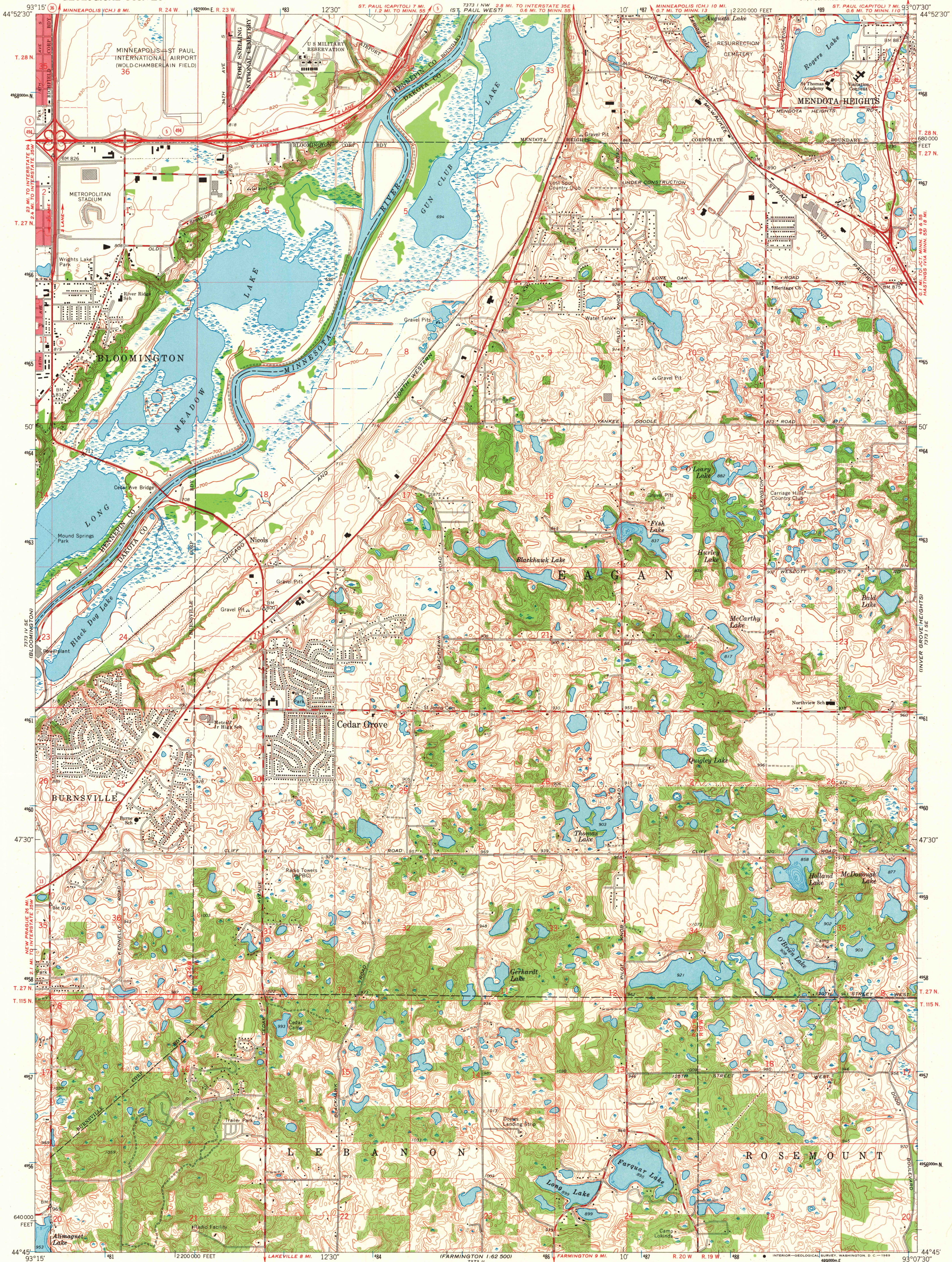
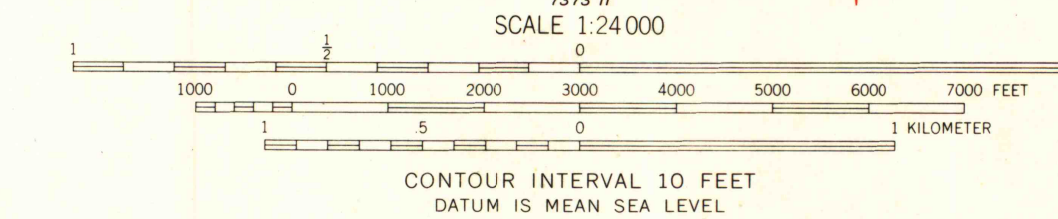


UNITED STATES  
DEPARTMENT OF THE INTERIOR  
GEOLOGICAL SURVEY

ST. PAUL SW QUADRANGLE  
MINNESOTA  
7.5 MINUTE SERIES (TOPOGRAPHIC)  
SW 1/4 ST. PAUL 15' QUADRANGLE



Mapped, edited, and published by the Geological Survey  
Control by USGS and USC&GS  
Topography by photogrammetric methods from aerial  
photographs taken 1947 and planetable surveys 1951. Revised 1967  
Depth curves and soundings compiled from charts furnished  
by Minnesota Department of Conservation  
Polyconic projection. 1927 North American datum  
10,000-foot grid based on Minnesota coordinate system, south zone  
1000-meter Universal Transverse Mercator grid ticks,  
zone 15, shown in blue  
Red tint indicates areas in which only landmark buildings are shown  
Dotted land lines established by private survey  
Fine red dashed lines indicate selected fence and field lines where  
generally visible on aerial photographs. This information is unchecked



THIS MAP COMPLIES WITH NATIONAL MAP ACCURACY STANDARDS  
FOR SALE BY U.S. GEOLOGICAL SURVEY, DENVER, COLORADO 80225, OR WASHINGTON, D.C. 20242  
A FOLDER DESCRIBING TOPOGRAPHIC MAPS AND SYMBOLS IS AVAILABLE ON REQUEST

MAP AND AIR PHOTO LIBRARY

JAN 5 1970  
University of Wisconsin

ROAD CLASSIFICATION  
Heavy-duty ——— Light-duty ———  
Medium-duty ——— Unimproved dirt ———  
Interstate Route ——— State Route ———

ST. PAUL SW, MINN.  
SW 1/4 ST. PAUL 15' QUADRANGLE  
N4445—W9307.5/7.5

1967

AMS 7373 I SW—SERIES V872