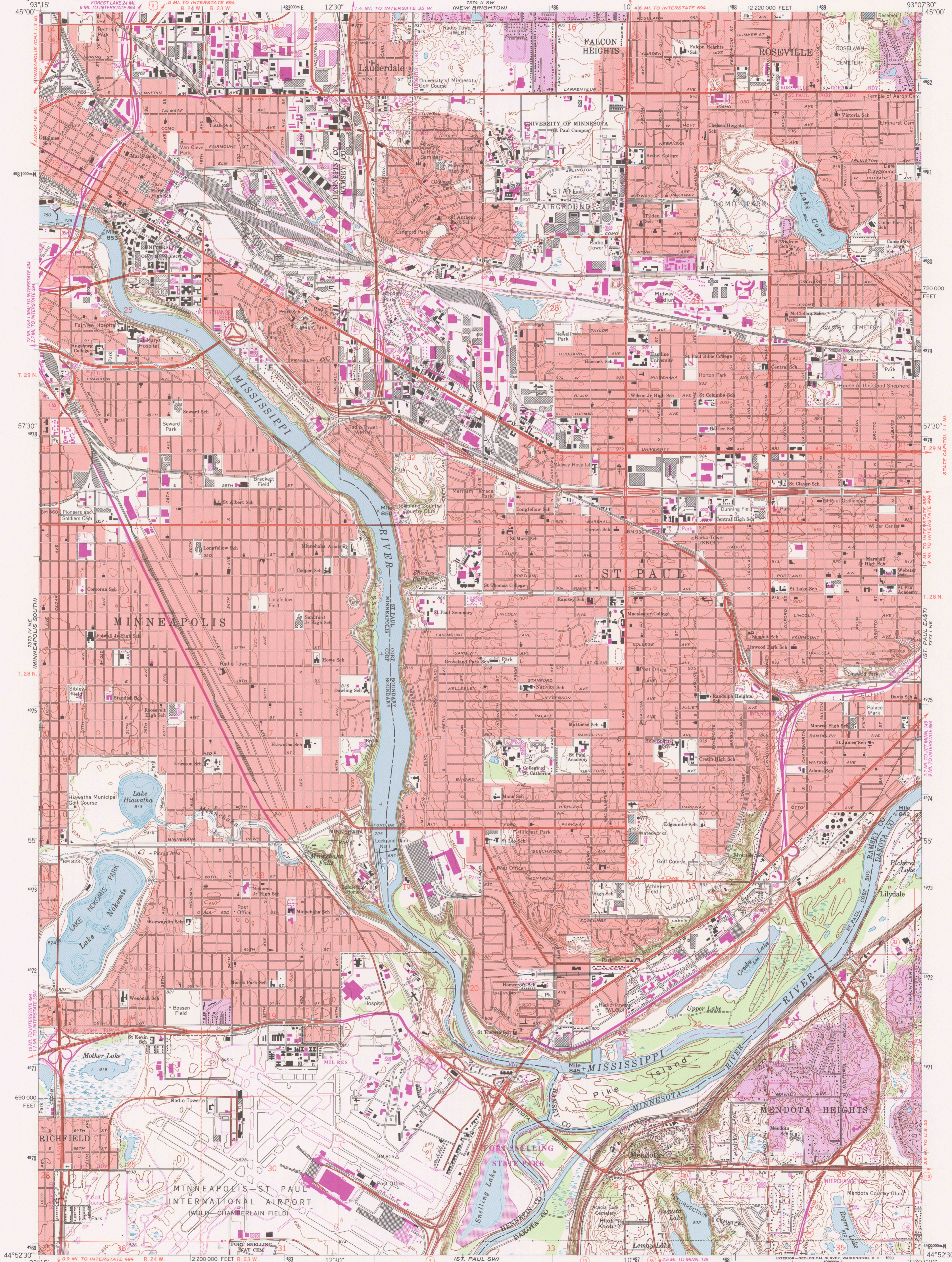


UNITED STATES
DEPARTMENT OF THE INTERIOR
GEOLOGICAL SURVEY

ST PAUL WEST QUADRANGLE
MINNESOTA
7.5 MINUTE SERIES (TOPOGRAPHIC)
NW/4 ST PAUL 15' QUADRANGLE



Produced by the United States Geological Survey
Control by USGS and NOS/NOAA
Topography by photogrammetric methods from aerial photographs taken 1947. Field checked 1951. Revised from aerial photographs taken 1966. Field checked 1967.
Projection and 10,000-foot grid ticks: Minnesota coordinate system, south zone (Lambert conformal cone)
1000-meter Universal Transverse Mercator grid ticks, zone 15, shown in blue 1927 North American Datum (NAD 27)
North American Datum of 1983 (NAD 83) is shown by dashed corner ticks
The values of the shift between NAD 27 and NAD 83 for 7.5-minute intersections are given in USGS Bulletin 11875
There may be private inholdings within the boundaries of the National or State reservations shown on this map
Red tint indicates areas in which only landmark buildings are shown
Dotted land lines established by private survey

UTM GRID AND 1983 MAGNETIC NORTH DECLINATION AT CENTER OF SHEET

CONTOUR INTERVAL 10 FEET
NATIONAL GEODETIC VERTICAL DATUM OF 1929

SCALE 1:24,000

ROAD CLASSIFICATION

- Heavy-duty
- Medium-duty
- Light-duty
- Unimproved dirt

Interstate Route U.S. Route State Route

ST PAUL WEST, MINN.
NW/4 ST PAUL 15' QUADRANGLE
44093-H2-TF-024

1967
REVISED 1993
DMA 7373 1 NW - SERIES V872

THIS MAP COMPLIES WITH NATIONAL MAP ACCURACY STANDARDS
FOR SALE BY U.S. GEOLOGICAL SURVEY
DENVER, COLORADO 80225, OR RESTON, VIRGINIA 22092
A FOLDER DESCRIBING TOPOGRAPHIC MAPS AND SYMBOLS IS AVAILABLE ON REQUEST

Revisions shown in purple and woodland compiled in cooperation with State of Minnesota agencies from aerial photographs taken 1991 and other sources. Contours not revised. This information not field checked. Map edited 1993.
Purple tint indicates extension of urban areas

ISSN 0-107-27094-2
9 780607 270942