

722 W E (ROBERTS LAKE)

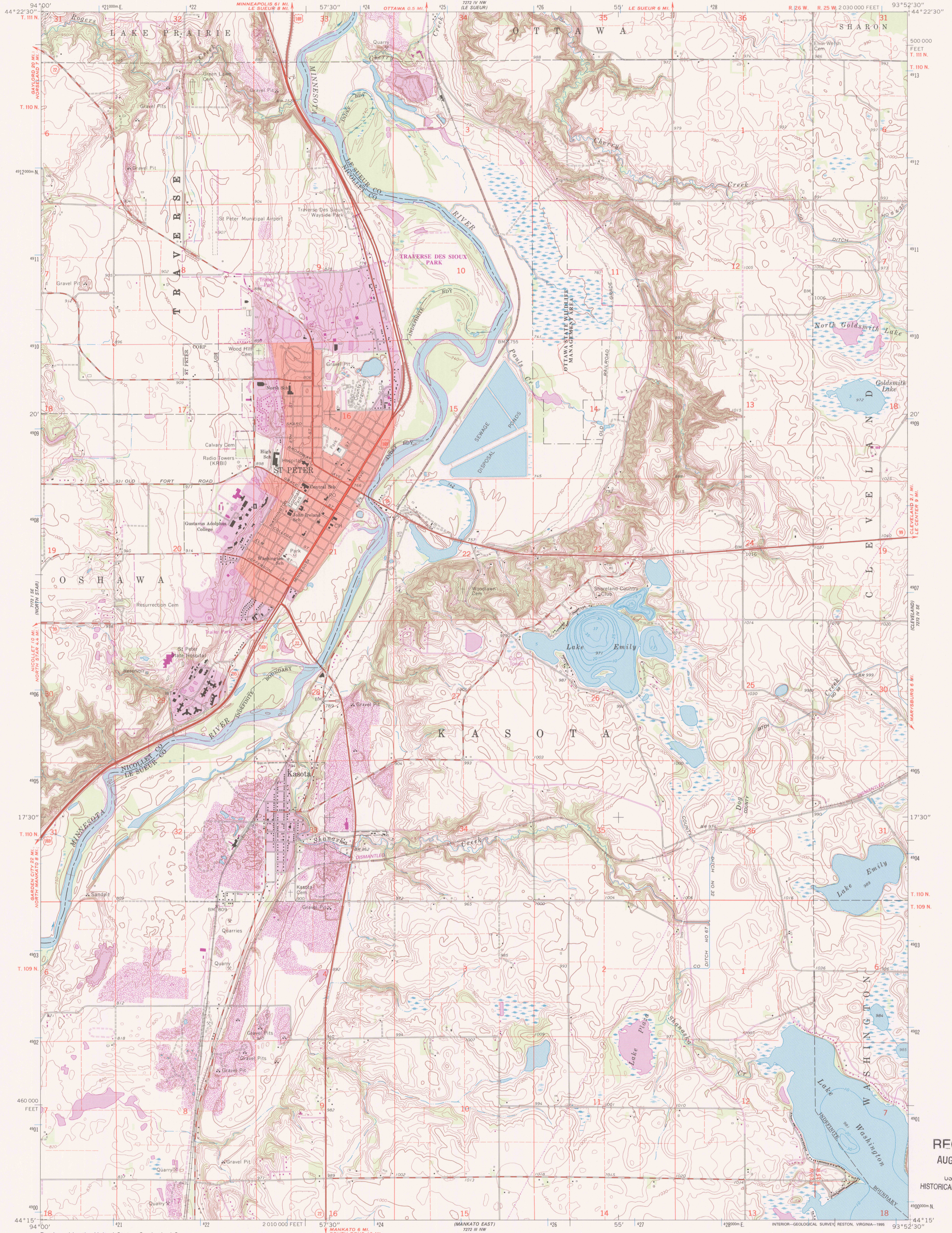


U.S. DEPARTMENT OF THE INTERIOR
U.S. GEOLOGICAL SURVEY

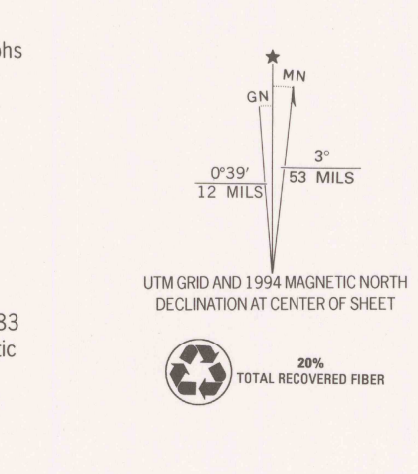
STATE OF MINNESOTA
DEPARTMENT OF ADMINISTRATION

ST. PETER QUADRANGLE
MINNESOTA
7.5 MINUTE SERIES (TOPOGRAPHIC)

722 W E (ST. THOMAS)



Produced by the United States Geological Survey
Topography by photogrammetric methods from aerial photographs taken 1963-64. Field checked 1965
Hydrography compiled from information furnished by Minnesota Department of Natural Resources
North American Datum of 1927 (NAD 27). Projection and 10 000-foot ticks: Minnesota coordinate system, south zone (Lambert conformal conic)
Blue 1000-meter Universal Transverse Mercator ticks, zone 15
North American Datum of 1983 (NAD 83) is shown by dashed corner ticks. The values of the shift between NAD 27 and NAD 83 for 7.5-minute intersections are obtainable from National Geodetic Survey NADCON software
There may be private inholdings within the boundaries of the National or State reservations shown on this map



CONTOUR INTERVAL 10 FEET
NATIONAL GEODETIC VERTICAL DATUM OF 1929
SCALE 1:24 000

ROAD CLASSIFICATION
Primary highway, hard surface
Secondary highway, hard surface
Light-duty road, hard or improved surface
Unimproved road
Interstate Route
U. S. Route
State Route

Revisions shown in purple compiled in cooperation with State of Minnesota agencies from aerial photographs taken 1991 and other sources. Map edited 1994
Information shown in purple may not meet USGS content standards and may conflict with previously mapped contours

ST. PETER, MINN.
44093-C8-TF-024
1991
DMA 7272 IV SW-SERIES V872

RECEIVED
AUG 3 1 2002
USGS/MIHL
HISTORICAL MAP ARCHIVE

