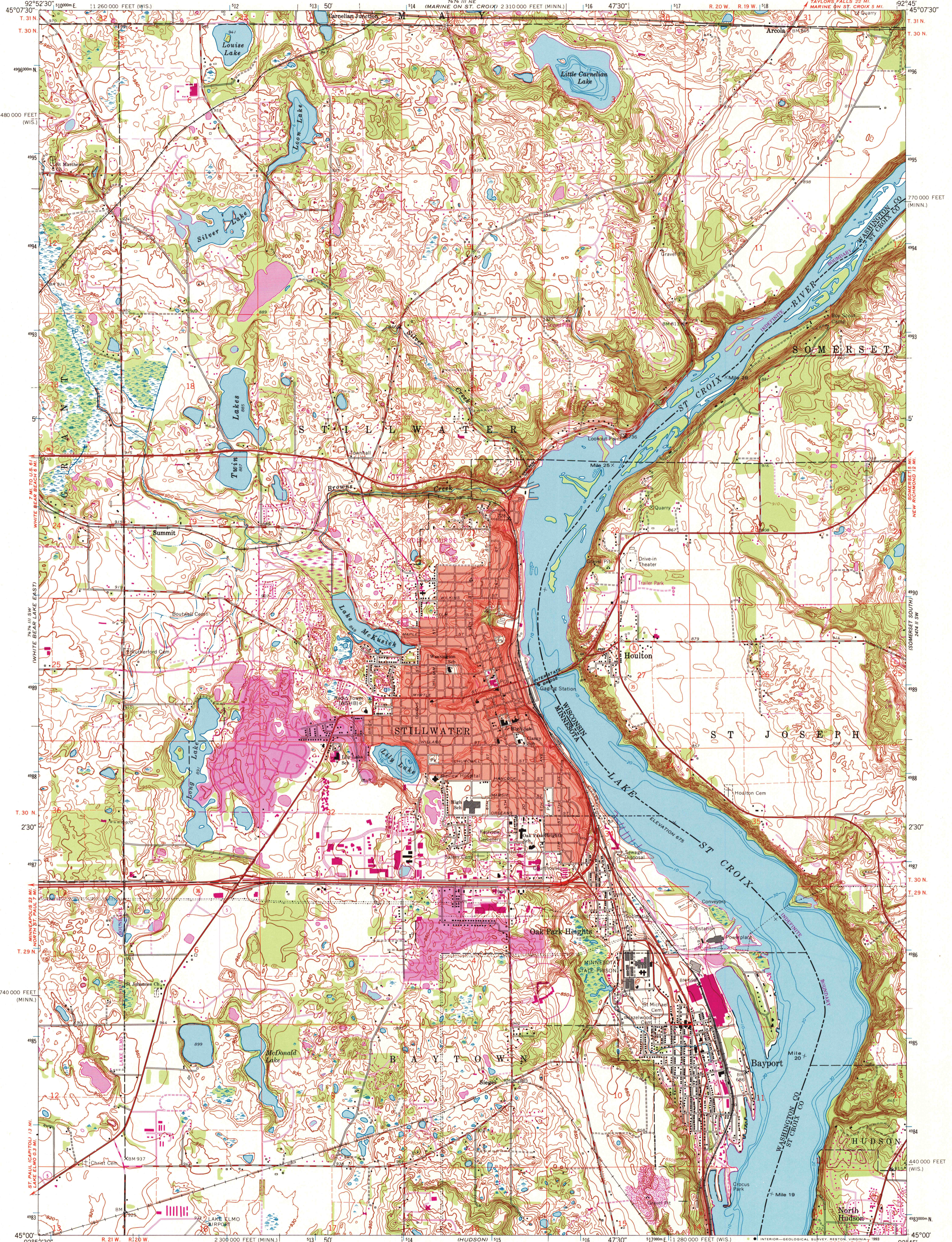
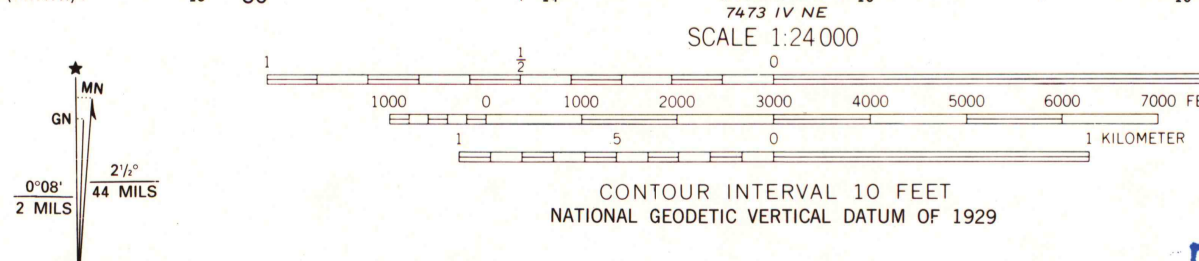


UNITED STATES
DEPARTMENT OF THE INTERIOR
GEOLOGICAL SURVEY

STILLWATER QUADRANGLE
MINNESOTA - WISCONSIN
7.5 MINUTE SERIES (TOPOGRAPHIC)



Produced by the United States Geological Survey
in cooperation with Minnesota Department of Administration
Control by USGS, NOS/NOAA and USCE
Topography by photogrammetric methods from aerial photographs
taken 1949 and planetable surveys 1946. Revised 1967 from aerial
photographs taken 1966
Hydrography compiled from information furnished by
Minnesota Department of Conservation
Projection: Minnesota coordinate system, south zone
(Lambert conformal conic)
10,000-foot grid ticks: Minnesota coordinate
system, south zone and Wisconsin coordinate system, central system
1000-meter Universal Transverse Mercator grid ticks, zone 15, shown in blue
1927 North American Datum (NAD 27)
North American Datum of 1983 (NAD 83) is shown by dashed corner ticks
The values of the shift between NAD 27 and NAD 83 for 7.5-minute
intersections are given in USGS Bulletin 1875
Red tint indicates areas in which only landmark buildings are shown
Purple tint indicates extension of urban areas



ROAD CLASSIFICATION
Primary highway, hard surface
Secondary highway, hard surface
Light-duty road, hard or improved surface
Unimproved road
Interstate Route
U. S. Route
State Route

U.S. Regional Depository Copy DO NOT DISCARD
QUADRANGLE LOCATION
STILLWATER, MINN. - WIS.
45092-A7-TF-024
1967
REvised 1993
DMA 7474 III SE--SERIES V872
Map edited 1993

1993
copy
1-1

A.H. ROBINSON
MAP LIBRARY
DEC 16 1993
University of Wisconsin
Madison