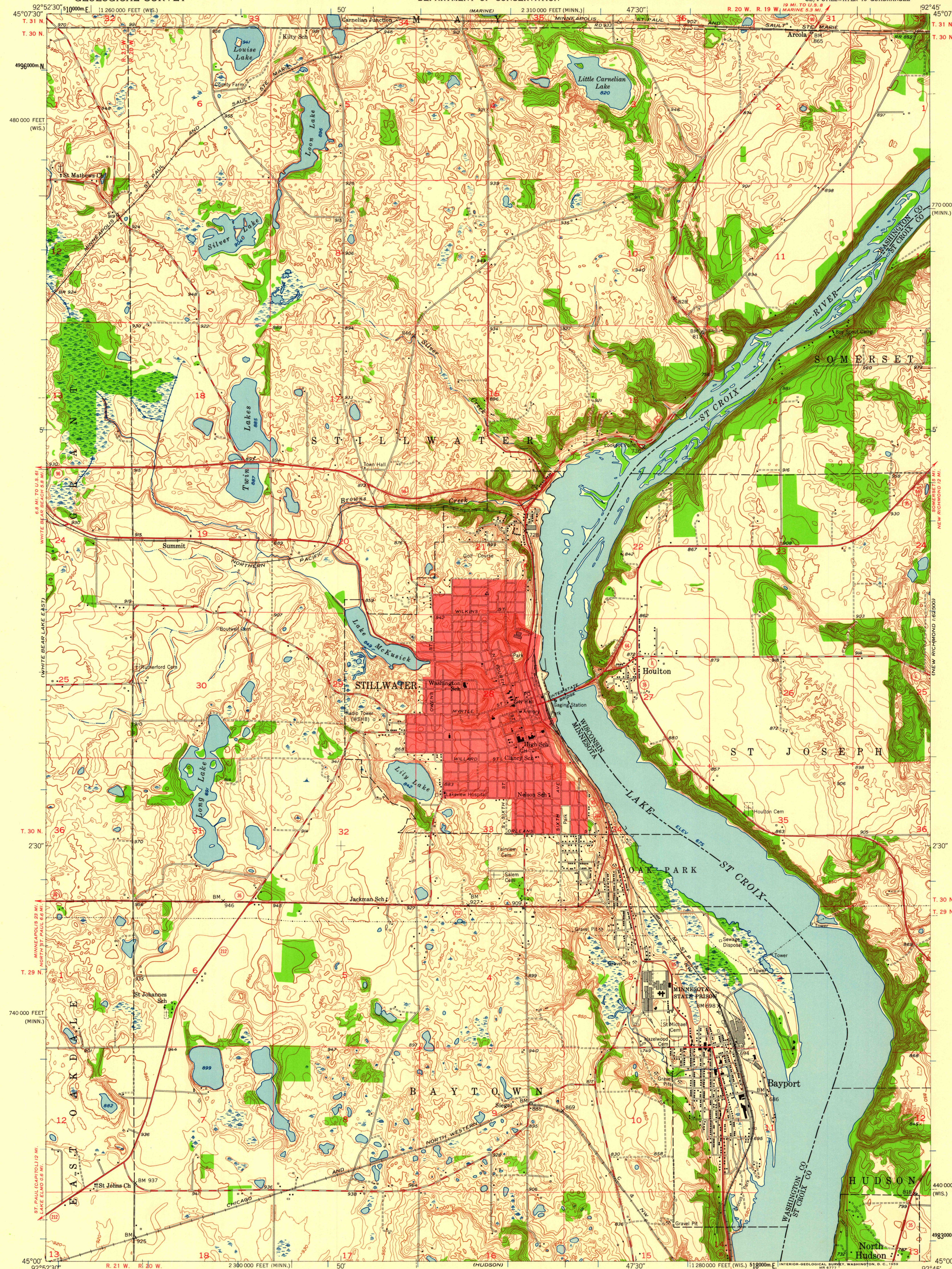


UNITED STATES  
DEPARTMENT OF THE INTERIOR  
GEOLOGICAL SURVEY

STATE OF MINNESOTA  
DEPARTMENT OF CONSERVATION

STILLWATER QUADRANGLE  
MINNESOTA-WISCONSIN  
7.5 MINUTE SERIES (TOPOGRAPHIC)  
SE/4 STILLWATER 15' QUADRANGLE

(NEW RICHMOND)  
1:62,500



Mapped, edited, and published by the Geological Survey

Control by USGS, USC&GS, and USCE

Topography by multiplex methods from aerial photographs  
taken 1949 and by plane-table surveys 1946  
Field check 1951

Polyconic projection. 1927 North American datum  
10,000-foot grids based on Minnesota coordinate system, south zone  
and Wisconsin coordinate system, central zone

1000-meter Universal Transverse Mercator grid ticks,  
zone 15, shown in blue

Red tint indicates area in which only landmark buildings are shown

TRUE NORTH  
MAGNETIC NORTH  
APPROXIMATE MEAN  
DECLINATION, 1951

SCALE 1:24,000

1 0 1000 2000 3000 4000 5000 6000 7000 FEET

1 0 5 10 15 20 25 30 35 40 45 50 KILOMETER

CONTOUR INTERVAL 10 FEET

DATUM IS MEAN SEA LEVEL

USGS  
Historical File  
Topographic Division

ROAD CLASSIFICATION  
Heavy-duty 4 LANE 16 LANE Light-duty  
Medium-duty 4 LANE 16 LANE Unimproved dirt  
U. S. Route State Route

U.S.G.S. STILLWATER, MINN.-WIS.  
FILE COPY SE/4 STILLWATER 15' QUADRANGLE  
N4500-W9245/7.5  
1951

THIS MAP COMPLIES WITH NATIONAL MAP ACCURACY STANDARDS  
FOR SALE BY U. S. GEOLOGICAL SURVEY, DENVER 25, COLORADO OR WASHINGTON 25, D. C.  
AND BY THE WISCONSIN GEOLOGICAL AND NATURAL HISTORY SURVEY, MADISON 5, WISCONSIN  
A FOLDER DESCRIBING TOPOGRAPHIC MAPS AND SYMBOLS IS AVAILABLE ON REQUEST

JUN 18 1951