

72° 52' 30" W  
1810 000 FEET (NORTH)

47° 15' N  
270 000 FEET (NORTH)

1810 000 FEET (NORTH)

47° 15' N

1810 000 FEET (NORTH)

47° 15' N

1810 000 FEET (NORTH)

47° 15' N

1810 000 FEET (NORTH)

47° 15' N

1810 000 FEET (NORTH)

47° 15' N

1810 000 FEET (NORTH)

47° 15' N

1810 000 FEET (NORTH)

47° 15' N

1810 000 FEET (NORTH)

47° 15' N

1810 000 FEET (NORTH)

47° 15' N

1810 000 FEET (NORTH)

47° 15' N

1810 000 FEET (NORTH)

47° 15' N

1810 000 FEET (NORTH)

47° 15' N

1810 000 FEET (NORTH)

47° 15' N

1810 000 FEET (NORTH)

47° 15' N

1810 000 FEET (NORTH)

47° 15' N

1810 000 FEET (NORTH)

47° 15' N

1810 000 FEET (NORTH)

47° 15' N

1810 000 FEET (NORTH)

47° 15' N

1810 000 FEET (NORTH)

47° 15' N

1810 000 FEET (NORTH)

47° 15' N

1810 000 FEET (NORTH)

47° 15' N

1810 000 FEET (NORTH)

47° 15' N

1810 000 FEET (NORTH)

47° 15' N

1810 000 FEET (NORTH)

47° 15' N

1810 000 FEET (NORTH)

47° 15' N

1810 000 FEET (NORTH)

47° 15' N

1810 000 FEET (NORTH)

47° 15' N

1810 000 FEET (NORTH)

47° 15' N

1810 000 FEET (NORTH)

47° 15' N

1810 000 FEET (NORTH)

47° 15' N

1810 000 FEET (NORTH)

47° 15' N

1810 000 FEET (NORTH)

47° 15' N

1810 000 FEET (NORTH)

47° 15' N

1810 000 FEET (NORTH)

47° 15' N

1810 000 FEET (NORTH)

47° 15' N

1810 000 FEET (NORTH)

47° 15' N

1810 000 FEET (NORTH)

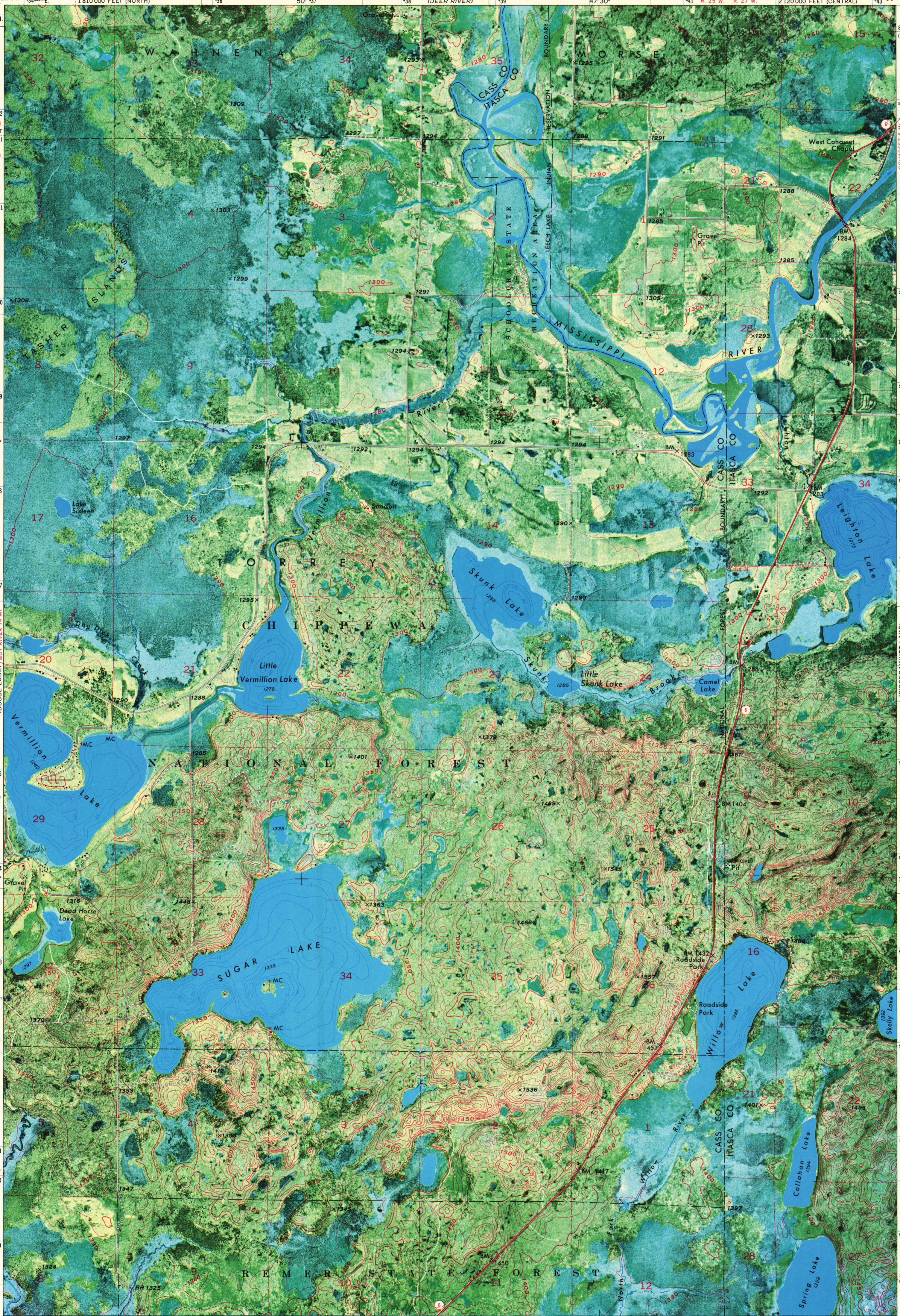
47° 15' N

1810 000 FEET (NORTH)

47° 15' N

1810 000 FEET (NORTH)

47° 15' N

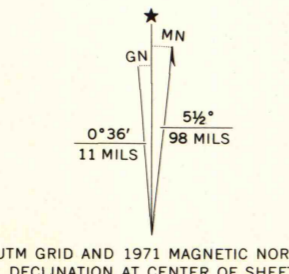


Mapped, edited, and published by the Geological Survey  
Control by USGS and USC&GS

Orthophotomap prepared from high-altitude aerial photograph  
taken April 24, 1969. Topography by photogrammetric methods  
from aerial photographs taken 1968. Field checked 1971

Hydrography compiled from information furnished by  
Minnesota Department of Conservation

Polyconic projection. 1927 North American datum  
10,000-foot grids based on Minnesota coordinate system, central  
and north zones  
1000-meter Universal Transverse Mercator grid ticks,  
zone 15, shown in blue



CONTOUR INTERVAL 10 FEET  
DATUM IS MEAN SEA LEVEL

THIS MAP COMPLIES WITH NATIONAL MAP ACCURACY STANDARDS  
FOR SALE BY U. S. GEOLOGICAL SURVEY, DENVER, COLORADO 80225, OR WASHINGTON, D. C. 20242  
A FOLDER DESCRIBING TOPOGRAPHIC MAPS AND SYMBOLS IS AVAILABLE ON REQUEST

ROAD CLASSIFICATION  
Primary highway, hard surface  
Secondary highway, hard surface  
Unimproved road  
Interstate Route  
U. S. Route  
State Route



SUGAR LAKE, MINN.  
N4707.5-W9345/7.5  
1971

AMS 7278 III NE-SERIES V8720

MAP AND AIR PHOTO  
LIBRARY

SEP 19 1974

University of Wisconsin