

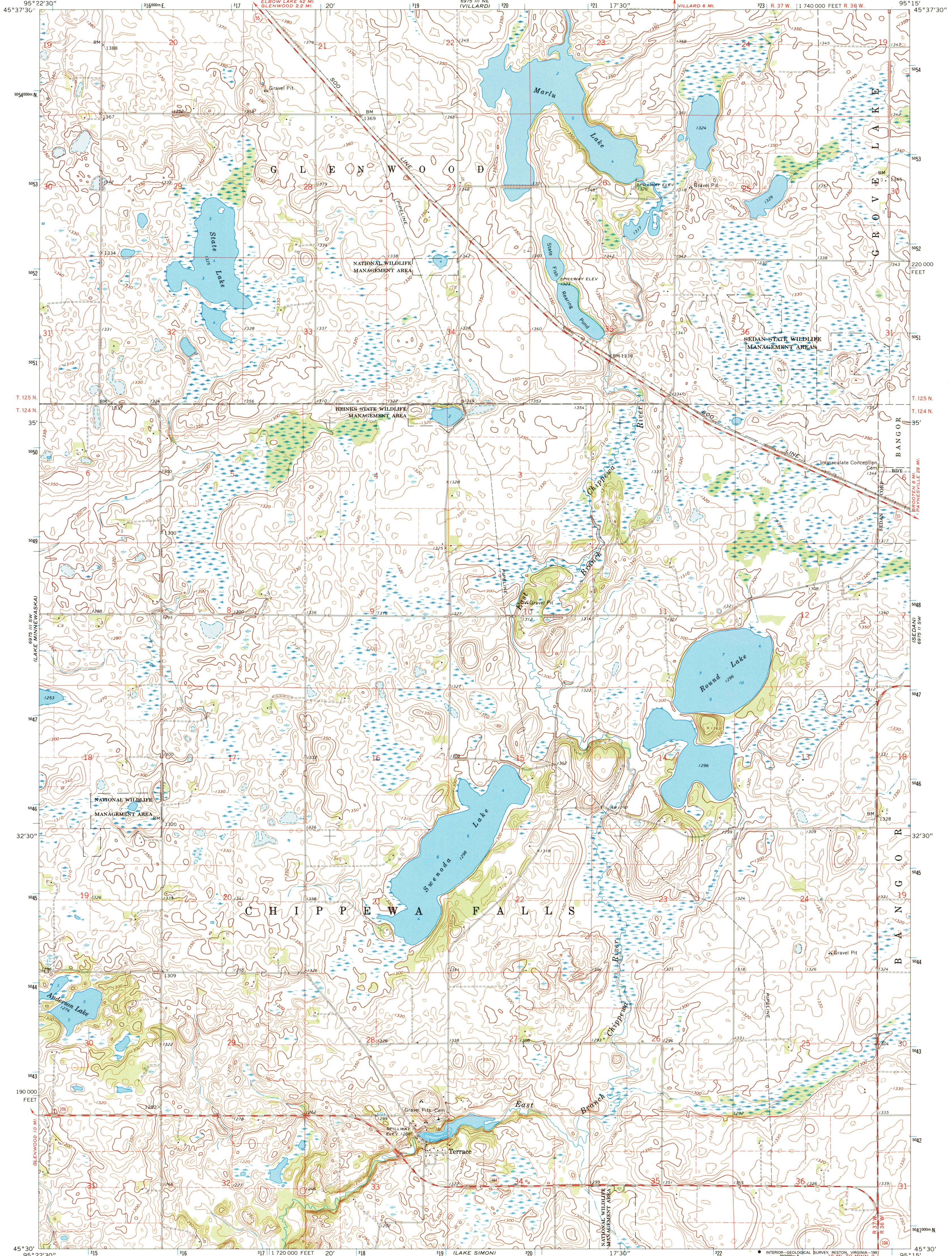
6975 III NW
(GLENWOOD)

UNITED STATES
DEPARTMENT OF THE INTERIOR
GEOLOGICAL SURVEY

STATE OF MINNESOTA
DEPARTMENT OF ADMINISTRATION

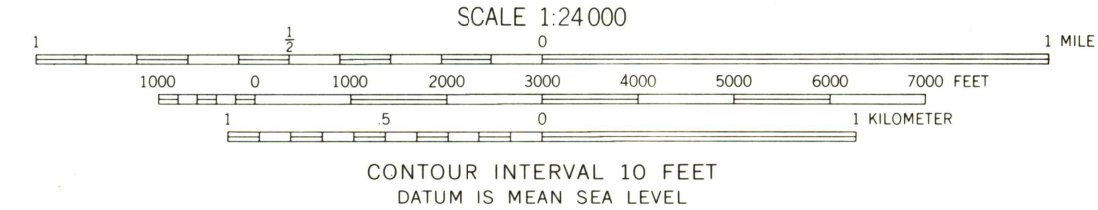
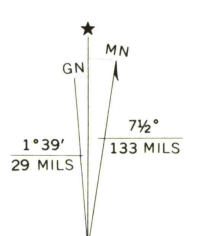
TERRACE QUADRANGLE
MINNESOTA—POPE CO.
7.5 MINUTE SERIES (TOPOGRAPHIC)

6975 I NW
(WESTPORT)



(SWIFT FALLS)
6974 IV NW

Mapped, edited, and published by the Geological Survey
Control by USGS and USC&GS
Topography by photogrammetric methods from aerial
photographs taken 1965. Field checked 1968
Depth curves and soundings compiled from charts
furnished by Minnesota Department of Conservation
Polyconic projection. 1927 North American datum
10,000-foot grid based on Minnesota coordinate system, central zone
1000-meter Universal Transverse Mercator grid ticks,
zone 15, shown in blue
Fine red dashed lines indicate selected fence and field lines where
generally visible on aerial photographs. This information is unchecked
Map photoinspected 1977
No major culture or drainage changes observed



ROAD CLASSIFICATION
Secondary highway, all weather, Light-duty road, all weather,
hard surface improved surface
Unimproved road, fair or dry
weather
State Route

(LAKE JOHNNA)
6974 IV NE

THIS MAP COMPLIES WITH NATIONAL MAP ACCURACY STANDARDS
FOR SALE BY U.S. GEOLOGICAL SURVEY
DENVER, COLORADO 80225, OR RESTON, VIRGINIA 22092
A FOLDER DESCRIBING TOPOGRAPHIC MAPS AND SYMBOLS IS AVAILABLE ON REQUEST

TERRACE, MINN.
N4530—W9515/7.5
1968
PHOTOINSPECTED 1977
AMS 6975 III SE—SERIES V872

