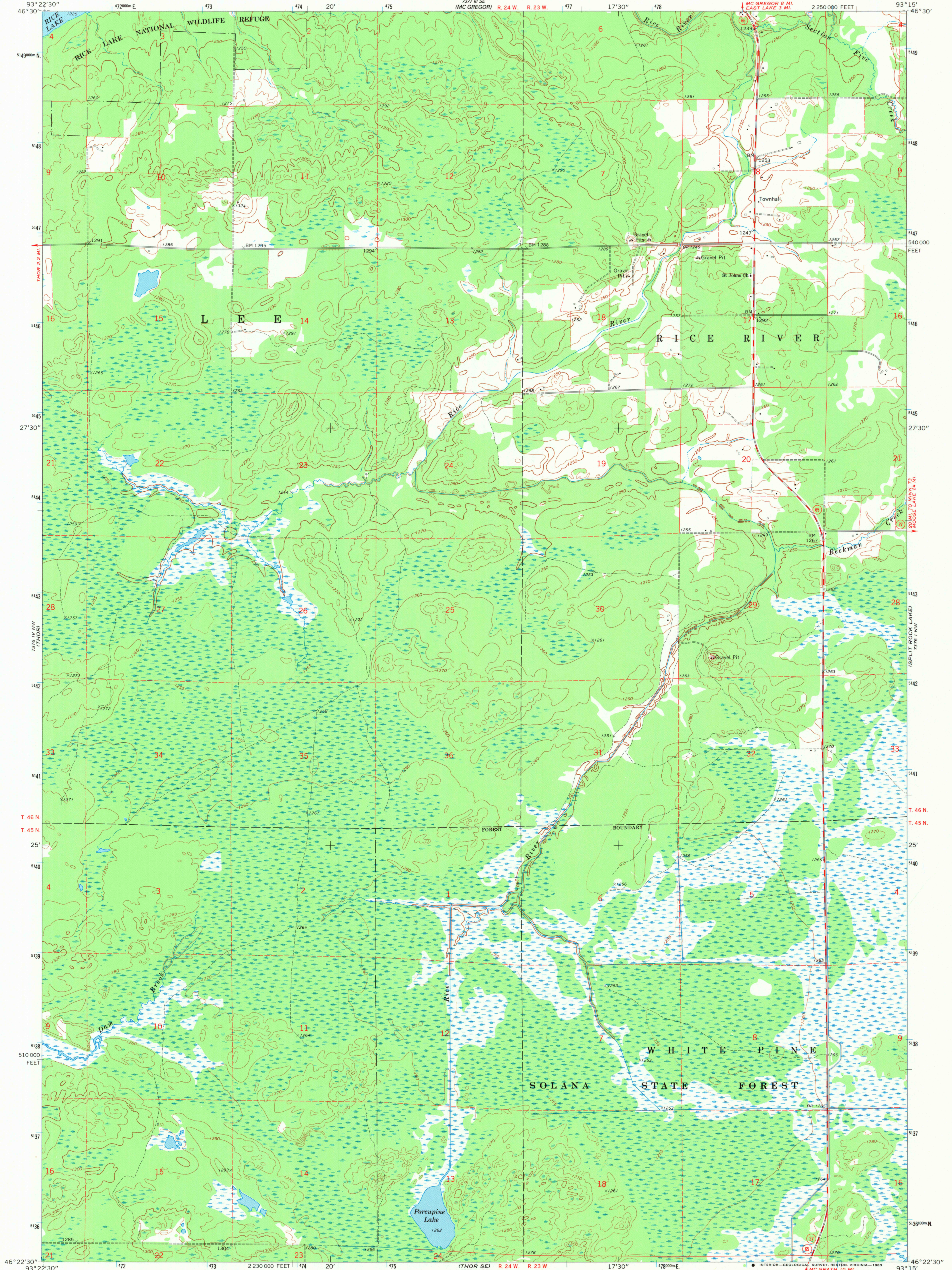


UNITED STATES  
DEPARTMENT OF THE INTERIOR  
GEOLOGICAL SURVEY

STATE OF MINNESOTA  
DEPARTMENT OF ADMINISTRATION

THOR NE QUADRANGLE  
MINNESOTA—AITKIN CO.  
7.5 MINUTE SERIES (TOPOGRAPHIC)



Mapped, edited, and published by the Geological Survey

Control by USGS and USC&GS

Topography by photogrammetric methods from aerial

photographs taken 1966. Field checked 1969

Polycyclic projection. 1927 North American datum

10,000-foot grid based on Minnesota coordinate system, central zone

1000-meter Universal Transverse Mercator grid ticks,

zone 15, shown in blue

To place on the predicted North American Datum 1983,

move the projection lines 8 meters north and

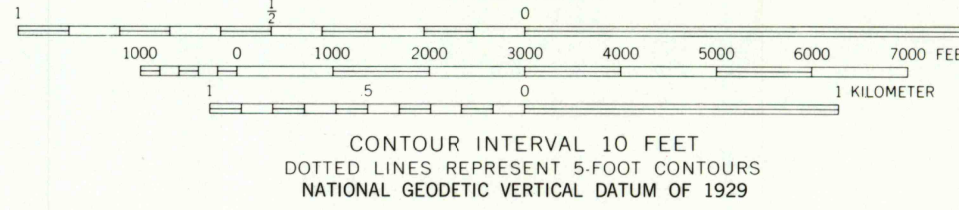
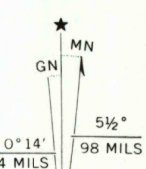
17 meters east as shown by dashed corner ticks

There may be private inholdings within the boundaries of

the National or State reservations shown on this map

Fine red dashed lines indicate selected fence and field lines where

generally visible on aerial photographs. This information is unchecked



ROAD CLASSIFICATION  
Secondary highway, all weather, Light-duty road, all weather,  
hard surface  
Unimproved road, fair or dry  
weather  
State Route

THOR NE, MINN.

N4622.5—W9315.7.5

1969

AMS 7376 IV NE—SERIES W872

RETURN TO:  
USGS AND HISTORICAL MAP ARCHIVES