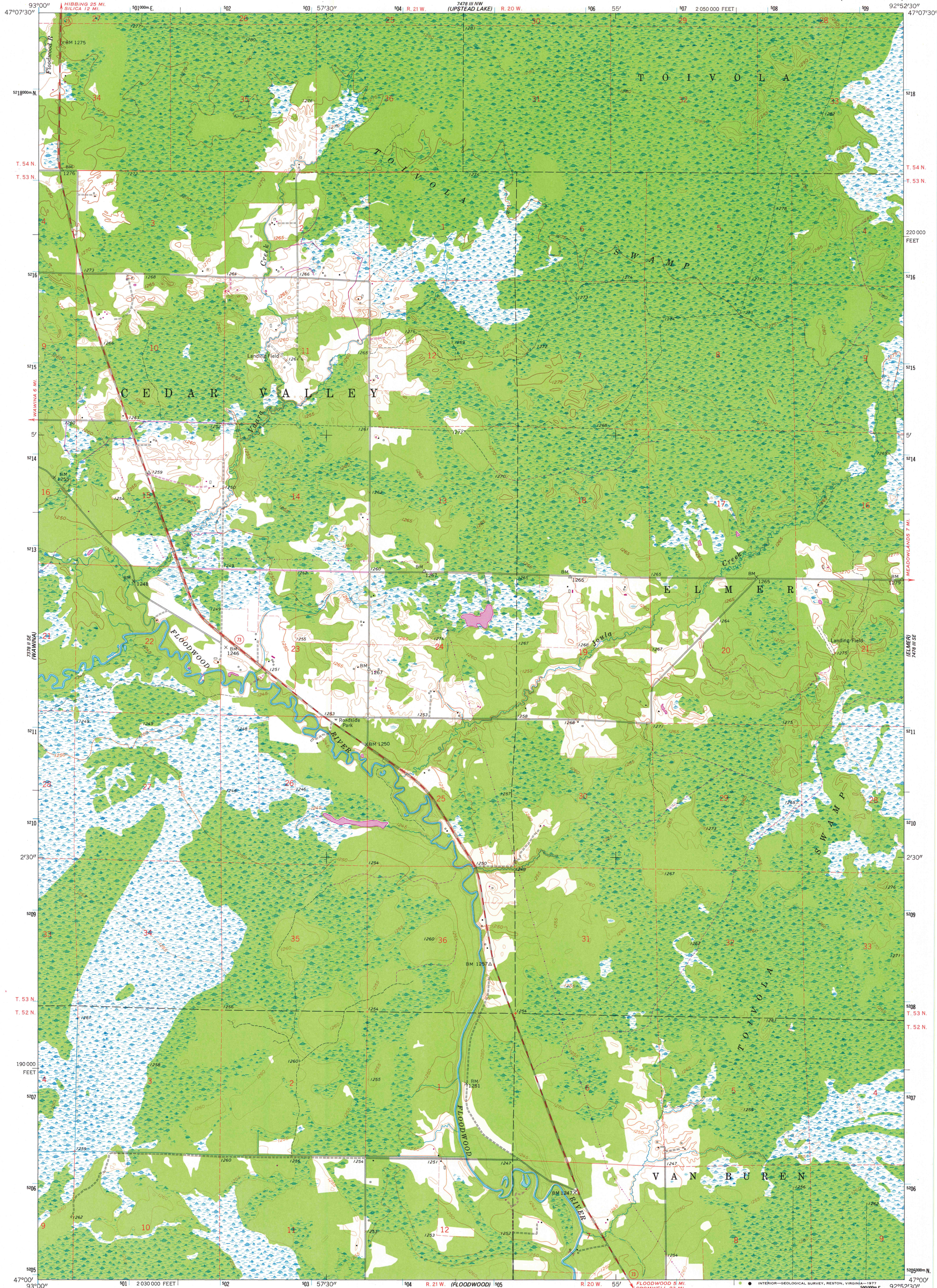
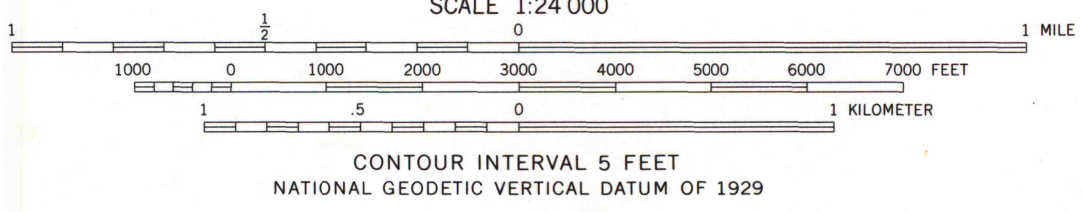
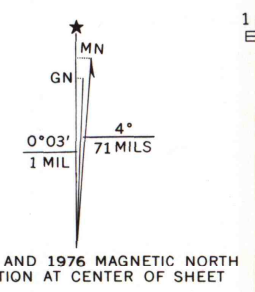


UNITED STATES
DEPARTMENT OF THE INTERIOR
GEOLOGICAL SURVEY

TOIVOLA SW QUADRANGLE
MINNESOTA—ST. LOUIS CO.
7.5 MINUTE SERIES (TOPOGRAPHIC)



Mapped, edited, and published by the Geological Survey
Control by USGS and USC&GS
Topography by photogrammetric methods from aerial
photographs taken 1953-54 and planetable surveys 1963
Polyconic projection. 1927 North American datum
10,000-foot grid based on Minnesota coordinate system, north zone
1000-meter Universal Transverse Mercator grid ticks,
zone 15, shown in blue
Fine red dashed lines indicate selected fence and field lines where
generally visible on aerial photographs
This information is unchecked
Revisions shown in purple compiled from aerial photographs
taken 1976. This information not field checked



ROAD CLASSIFICATION

Medium-duty	Light-duty
Unimproved dirt	State Route

THIS MAP COMPLIES WITH NATIONAL MAP ACCURACY STANDARDS
FOR SALE BY U. S. GEOLOGICAL SURVEY, RESTON, VIRGINIA 22092
A FOLDER DESCRIBING TOPOGRAPHIC MAPS AND SYMBOLS IS AVAILABLE ON REQUEST

TOIVOLA SW, MINN.
N4700—W9252.5/7.5
1968
PHOTOREVISED 1976
AMS 7478 III SW—SERIES V872

MAP AND AIR PHOTO
LIBRARY
JUN 27 1978
University of Wisconsin
Madison