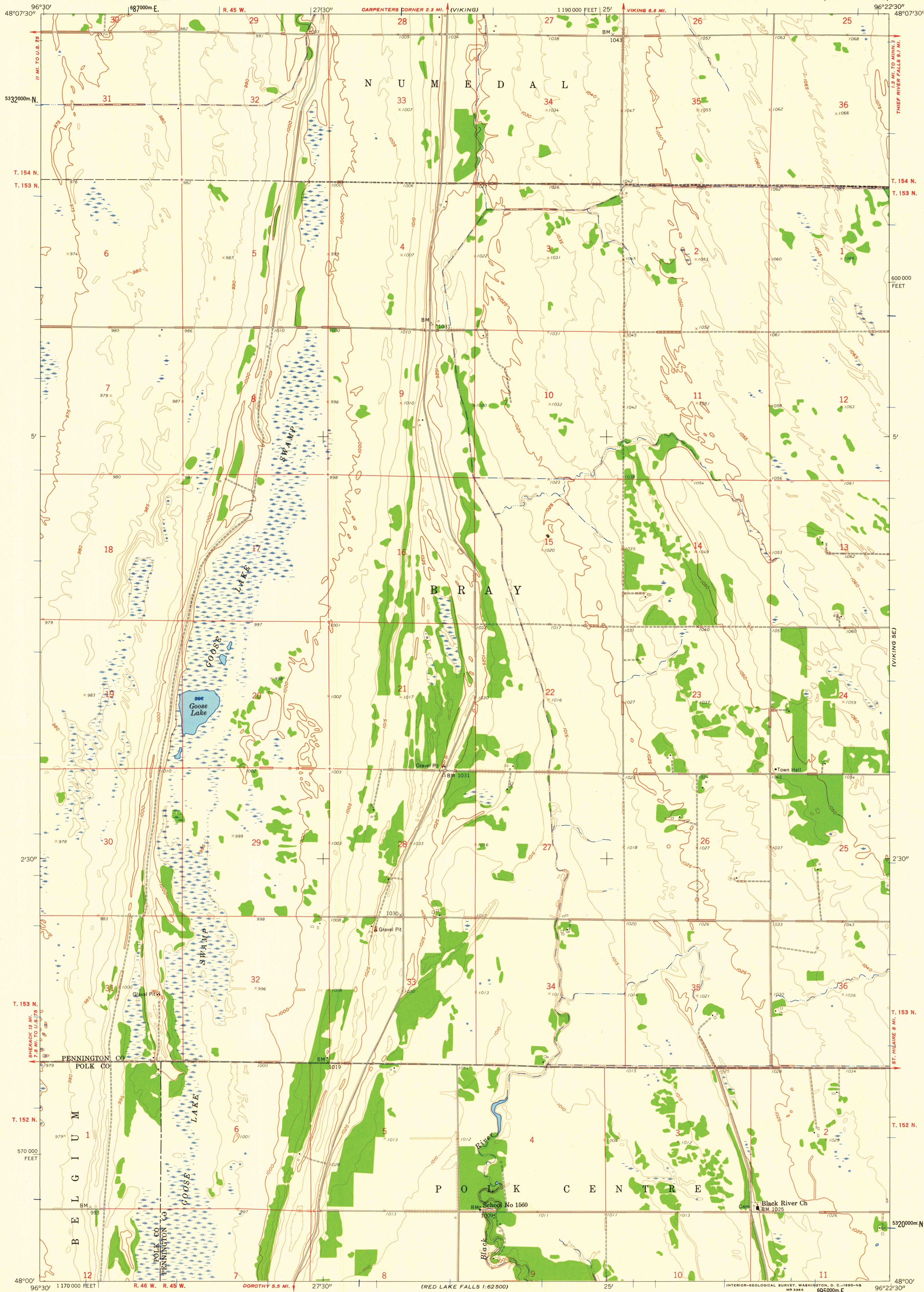


UNITED STATES
DEPARTMENT OF THE INTERIOR
GEOLOGICAL SURVEY

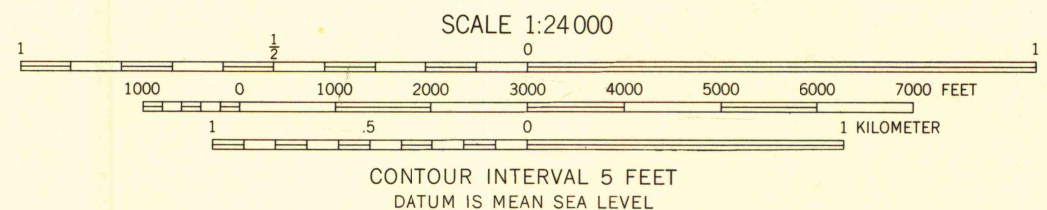
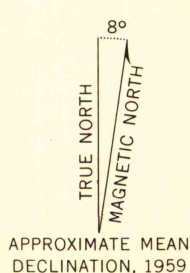
VIKING SW QUADRANGLE
MINNESOTA
7.5 MINUTE SERIES (TOPOGRAPHIC)



Maped, edited, and published by the Geological Survey
Control by USGS and USC&GS

Culture and drainage in part compiled from aerial photographs
taken 1953-1954. Topography by planetable surveys 1959

Polyconic projection, 1927 North American datum
10,000-foot grid based on Minnesota coordinate system, north zone
1000-meter Universal Transverse Mercator grid ticks,
zone 14, shown in blue



ROAD CLASSIFICATION
Light-duty ———— Unimproved dirt ————

VIKING SW, MINN.
N4800-W9622.5/7.5

1959

MAP AND AIR PHOTO LIBRARY
University of Wisconsin