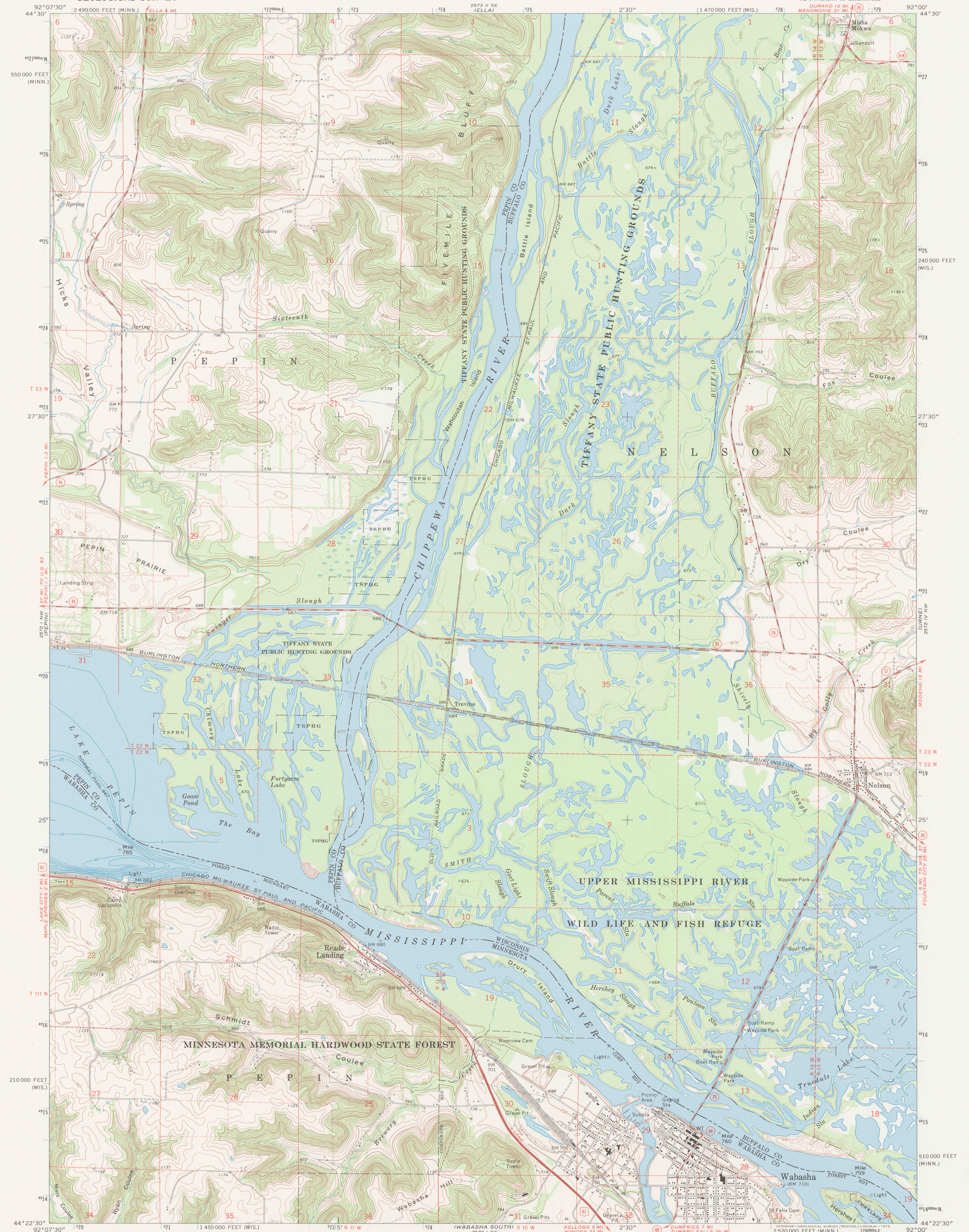


UNITED STATES  
DEPARTMENT OF THE INTERIOR  
GEOLOGICAL SURVEY

WABASHA NORTH QUADRANGLE  
MINNESOTA - WISCONSIN  
7.5 MINUTE SERIES (TOPOGRAPHIC)



Mapped, edited, and published by the Geological Survey in cooperation with the Minnesota Department of Administration Control by USGS and NOS/NOAA

Topography by photogrammetric methods from aerial photographs taken 1973-74. Field checked 1974

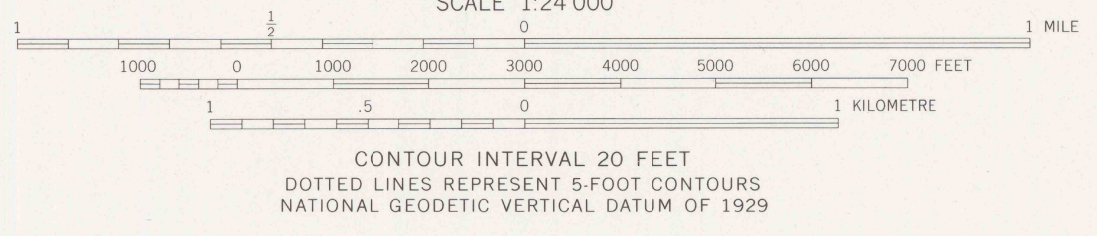
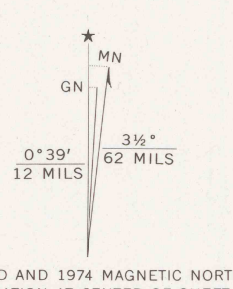
Hydrography compiled from information furnished by Minnesota Department of Natural Resources

Projection: Wisconsin coordinate system, central zone (Lambert conformal conic)

10,000-foot grid ticks based on Wisconsin coordinate system, central zone and Minnesota coordinate system, south zone 1000-metre Universal Transverse Mercator grid ticks, zone 15, shown in blue. 1927 North American datum

Fine red dashed lines indicate selected fence and field lines where generally visible on aerial photographs

This information is unchecked



ROAD CLASSIFICATION

Primary highway, hard surface	Light-duty road, hard or improved surface
Secondary highway, hard surface	Unimproved road
Interstate Route	U.S. Route
	State Route

WABASHA NORTH, MINN.-WIS.  
NE/4 WABASHA 15' QUADRANGLE  
N4422.5-W92007.5  
1974  
AMS 2572 1 NE-SERIES V861

U.S. GEOLOGICAL SURVEY  
APR 30 1974  
REC'D FILE COPY

