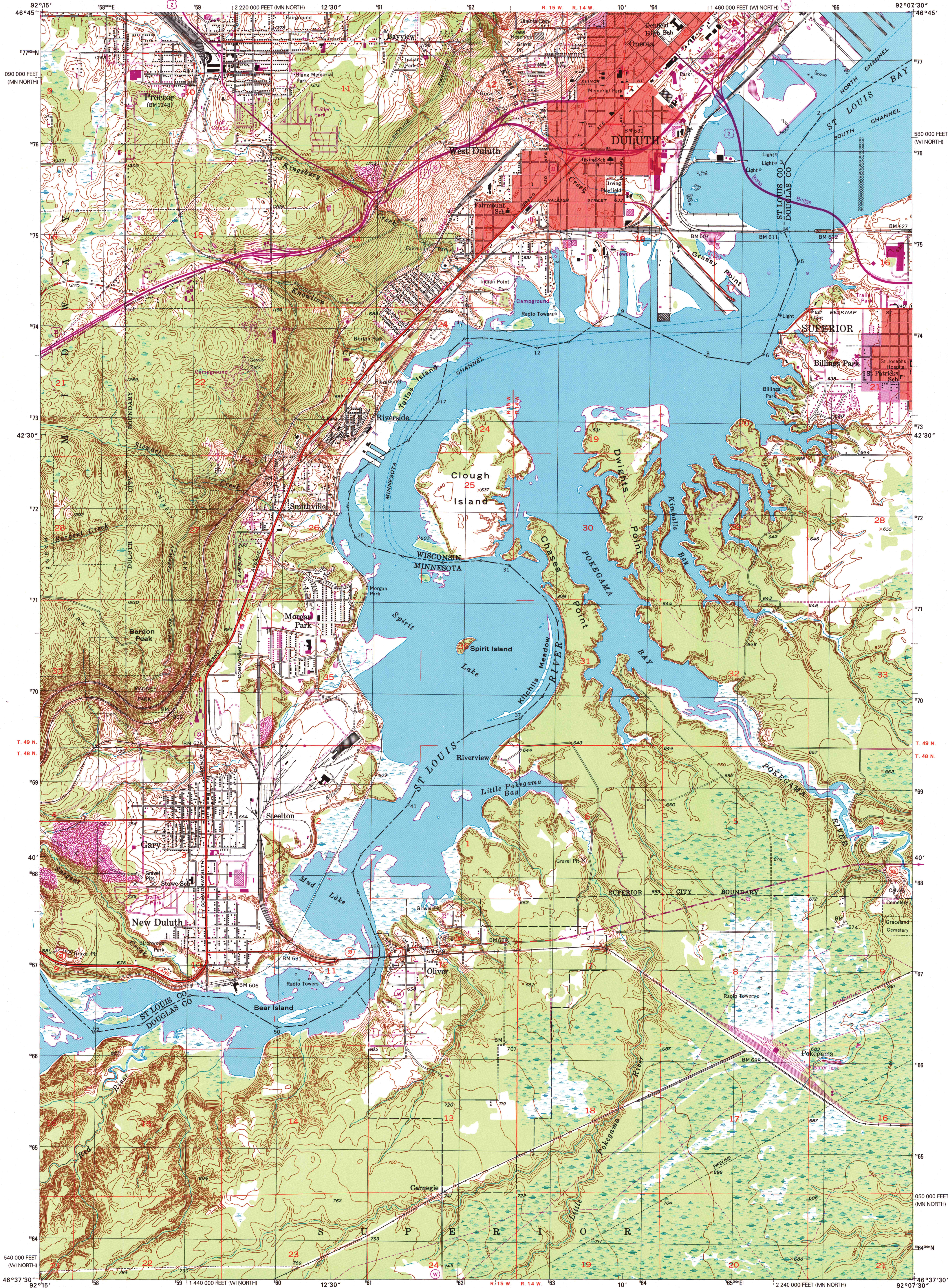




U.S. DEPARTMENT OF THE INTERIOR
U.S. GEOLOGICAL SURVEY



WEST DULUTH QUADRANGLE
MINNESOTA-WISCONSIN
7.5-MINUTE SERIES (TOPOGRAPHIC)



Produced by the United States Geological Survey
Topography compiled 1952. Planimetry derived from imagery taken 1991 and other sources. Photomaps using imagery dated 1997; no major culture or drainage changes observed. PLSS and survey control current as of 1954. Boundaries, other than corporate, verified 1999.
North American Datum of 1927 (NAD 27). Projection and 10 000-foot ticks: Minnesota coordinate system, north zone (Lambert conformal conic).
10 000-foot ticks: Minnesota coordinate system, north zone and Wisconsin coordinate system, north zone.
1000-meter Universal Transverse Mercator grid, zone 15.
North American Datum of 1983 (NAD 83) is shown by dashed corner ticks. The values of the shift between NAD 27 and NAD 83 for 7.5-minute intersections are obtainable from National Geodetic Survey NADCON software.
There may be private inholdings within the boundaries of the National or State reservations shown on this map.
Information shown in purple may not meet USGS content standards and may conflict with previously mapped contours.

UTM GRID AND 1999 MAGNETIC NORTH DECLINATION AT CENTER OF SHEET

SCALE 1:24 000
CONTOUR INTERVAL 10 FEET
NATIONAL GEODETIC VERTICAL DATUM OF 1929
TO CONVERT FROM FEET TO METERS, MULTIPLY BY 0.3048



ROAD CLASSIFICATION
Primary highway hard surface
Secondary highway hard surface
Light-duty road, hard or improved surface
Unimproved road
Interstate Route
U.S. Route
State Route

1	2	3
4	5	6
7	8	9

WEST DULUTH, MN-WI
1997

NIMA 7577 II NW-SERIES 5872
4-637

A.H. ROBINSON
MAP LIBRARY
JAN 03 2000
University of Wisconsin
Madison

U.S. Regional
Depository Copy
DO NOT DISCARD

1999
Copy
1-1