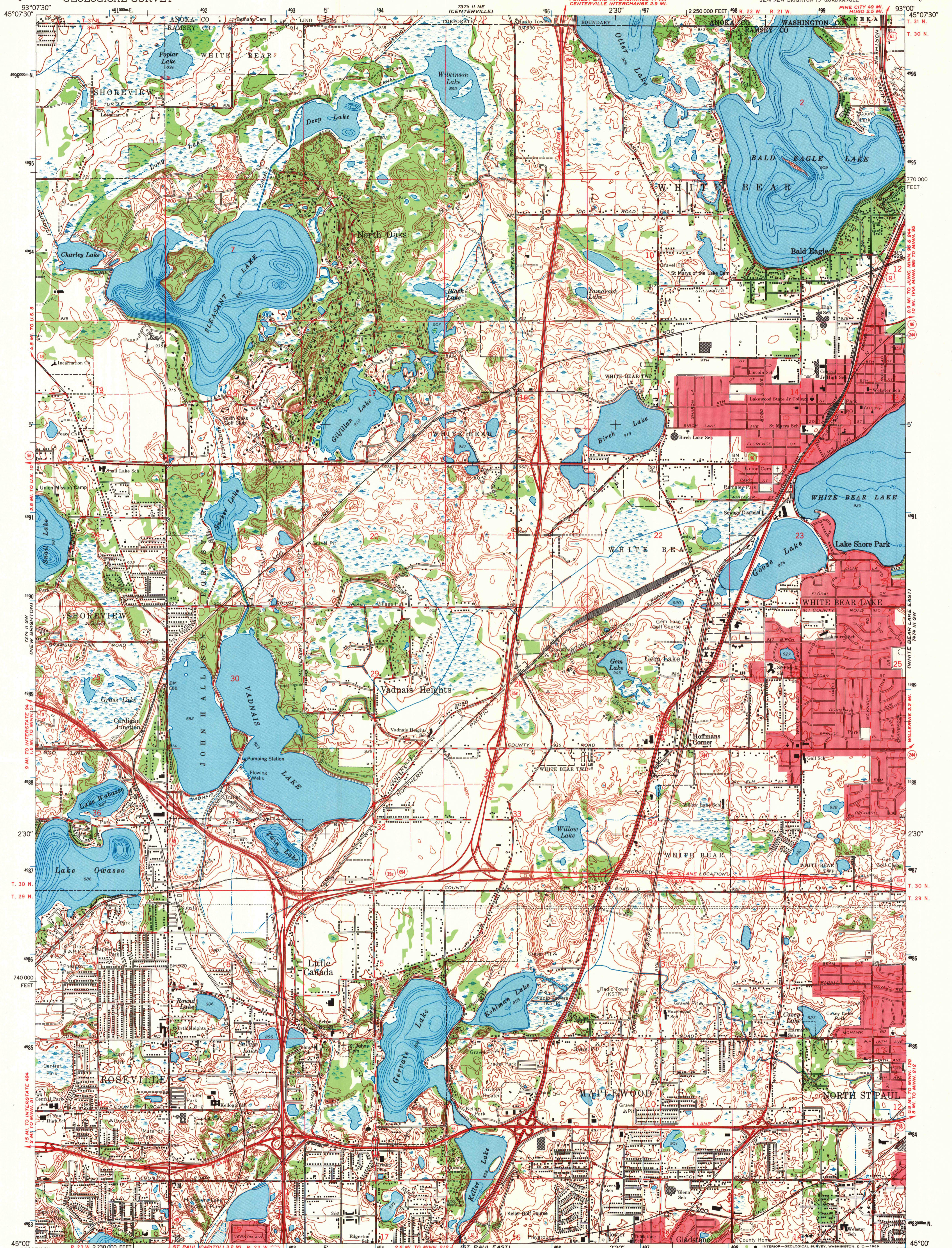


UNITED STATES  
DEPARTMENT OF THE INTERIOR  
GEOLOGICAL SURVEY

WHITE BEAR LAKE WEST QUADRANGLE  
MINNESOTA

7.5 MINUTE SERIES (TOPOGRAPHIC)

SE/4 NEW BRIGHTON 15' QUADRANGLE



Mapped, edited, and published by the Geological Survey

Control by USGS and USC&GS

Topography by photogrammetric methods from aerial photographs taken 1947. Field checked 1952. Revised 1967

Depth curves compiled from charts furnished by Minnesota Department of Conservation

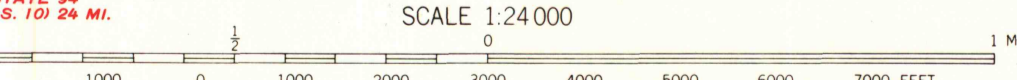
Polyconic projection. 1927 North American datum

10,000-foot grid based on Minnesota coordinate system, south zone

1000-meter Universal Transverse Mercator grid ticks, zone 15, shown in blue

Red tint indicates areas in which only landmark buildings are shown

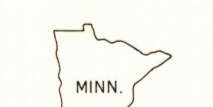
Fine red dashed lines indicate selected fence and field lines where generally visible on aerial photographs. This information is unchecked



CONTOUR INTERVAL 10 FEET  
DATUM IS MEAN SEA LEVEL

ROAD CLASSIFICATION

Heavy-duty	Light-duty
Medium-duty	Unimproved dirt
Interstate Route	U.S. Route
	State Route



WHITE BEAR LAKE WEST, MINN.  
SE/4 NEW BRIGHTON 15' QUADRANGLE  
N4500—W9300/7.5

AUG 26 1969

1967

AMS 7374 II SE—SERIES V872

THIS MAP COMPLIES WITH NATIONAL MAP ACCURACY STANDARDS  
FOR SALE BY U.S. GEOLOGICAL SURVEY, DENVER, COLORADO 80225, OR WASHINGTON, D.C. 20242  
A FOLDER DESCRIBING TOPOGRAPHIC MAPS AND SYMBOLS IS AVAILABLE ON REQUEST

MAP AND AIR PHOTO LIBRARY

University of Wisconsin