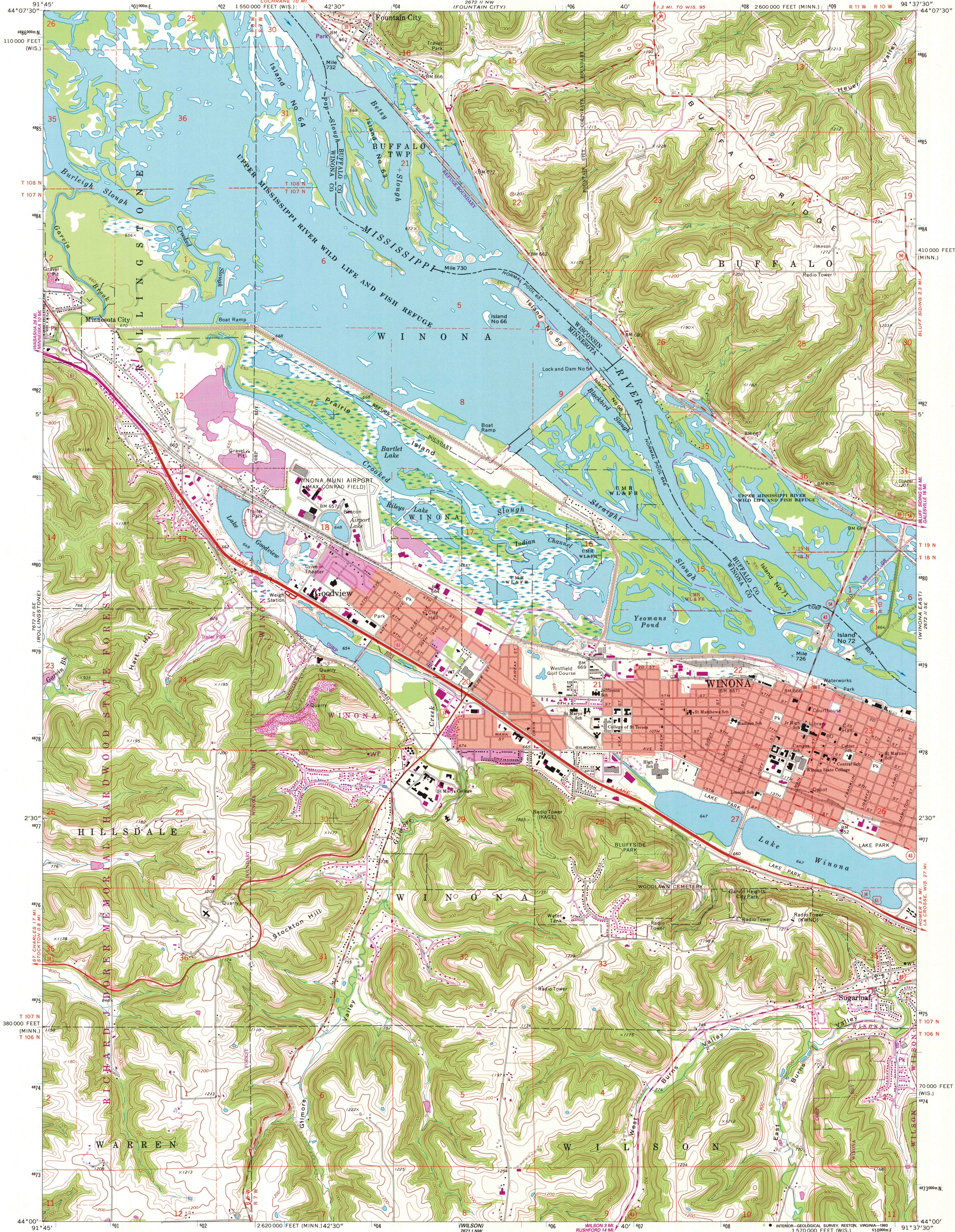
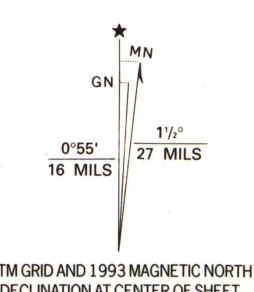


UNITED STATES  
DEPARTMENT OF THE INTERIOR  
GEOLOGICAL SURVEY

WINONA WEST QUADRANGLE  
MINNESOTA-WISCONSIN  
7.5 MINUTE SERIES (TOPOGRAPHIC)



Produced by the United States Geological Survey  
Control by USGS and NOS/NOAA  
Topography by photogrammetric methods from aerial photographs  
taken 1972. Field checked 1972  
Projection: Minnesota coordinate system, south zone  
(Lambert conformal conic)  
10,000-foot grid ticks: Minnesota coordinate system,  
south zone and Wisconsin coordinate system,  
central zone  
1000-meter Universal Transverse Mercator grid ticks, zone 15, shown in blue  
1927 North American Datum (NAD 27)  
North American Datum of 1983 (NAD 83) is shown by dashed corner ticks  
The values of the shift between NAD 27 and NAD 83 for 7.5-minute  
intersections are given in USGS Bulletin 1875  
There may be private inholdings within the boundaries of  
the National or State reservations shown on this map  
Red tint indicates areas in which only landmark buildings are shown  
Fine red dashed lines indicate selected fence and field lines where  
generally visible on aerial photographs. This information is unchecked



CONTOUR INTERVAL 20 FEET  
DOTTED LINES REPRESENT 5-FOOT CONTOURS  
NATIONAL GEODETIC DATUM OF 1929

THIS MAP COMPLIES WITH NATIONAL MAP ACCURACY STANDARDS  
FOR SALE BY U.S. GEOLOGICAL SURVEY, RESTON, VIRGINIA 22092  
AND BY THE WISCONSIN GEOLOGICAL AND NATURAL HISTORY SURVEY, MADISON, WISCONSIN 53706  
A FOLDER DESCRIBING TOPOGRAPHIC MAPS AND SYMBOLS IS AVAILABLE ON REQUEST



ROAD CLASSIFICATION  
Primary highway, light-duty road, hard or improved surface  
Secondary highway, hard surface  
Unimproved road  
Interstate Route  
U. S. Route  
State Route

WINONA WEST, MINN.-WIS.

44091-A6-TF-024  
1972  
REVISED 1993  
DMA 7672 II SW-SERIES V872

Revisions shown in purple and woodland compiled in cooperation with State of Minnesota agencies from aerial photographs taken 1991 and other sources  
Contours not revised. This information not field checked  
Map edited 1993  
Purple tint indicates extension of urban area

U.S. Regional  
Depository Copy  
DO NOT DISCARD

A.H. ROBINSON  
MAP LIBRARY  
MAR 15 1994

University of Wisconsin  
Madison

1993  
COPY  
MNI

701  
4-632