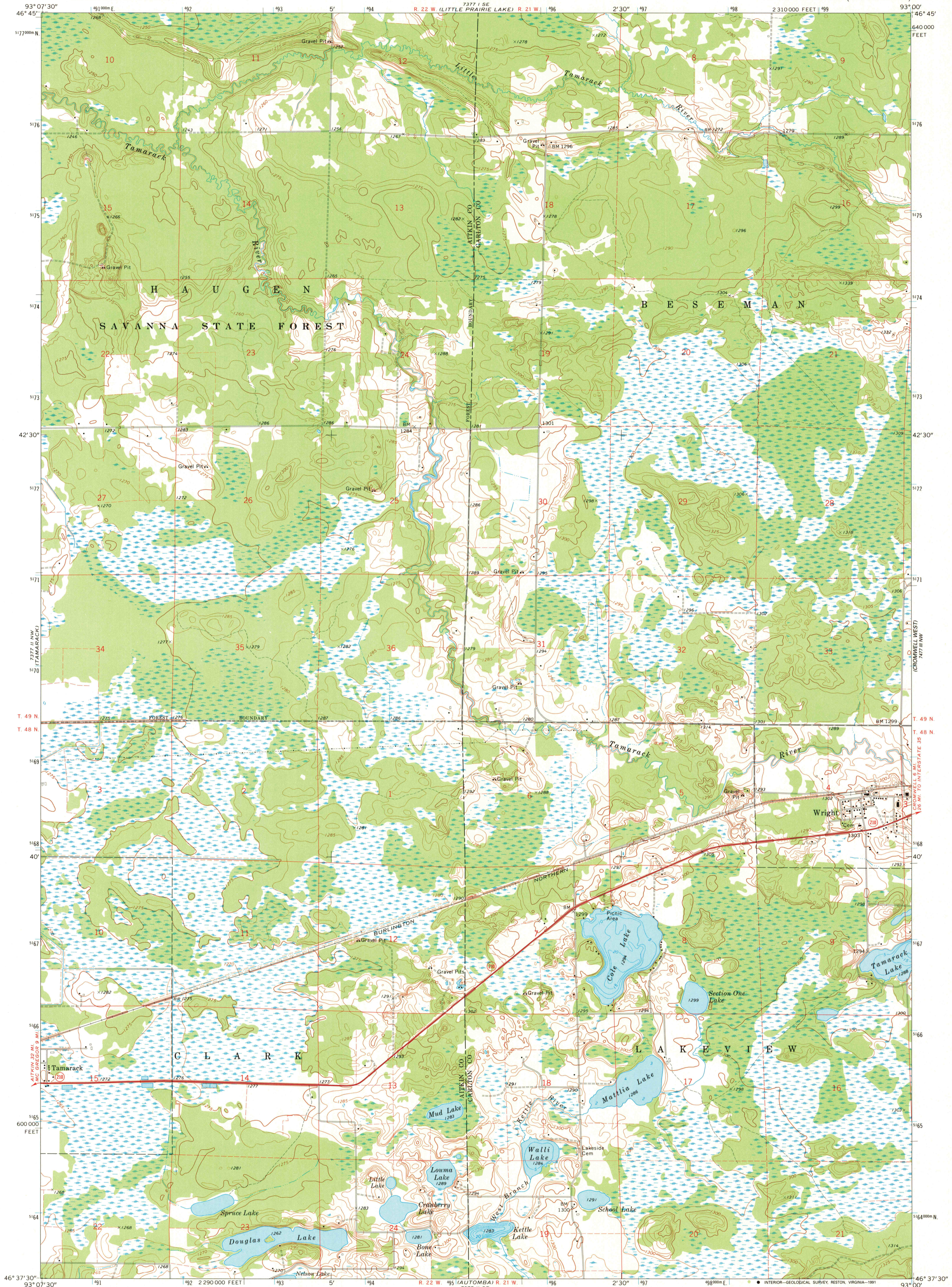


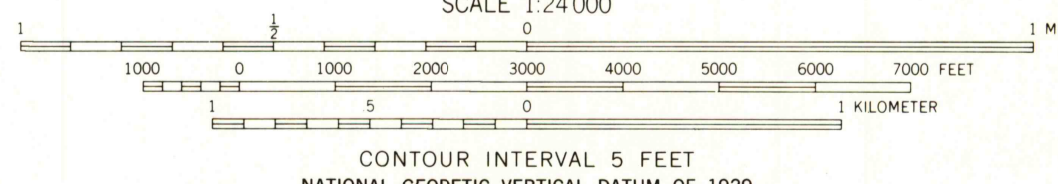
7377 I SW
(PAIRIE LAKE)

7377 I SW
(PAIRIE LAKE)



Mapped, edited, and published by the Geological Survey
Control by USGS and USC&GS
Topography by photogrammetric methods from aerial
photographs taken 1966, 1968-69 and planetable surveys 1970
Hydrography compiled from information furnished by
Minnesota Department of Conservation
Polyconic projection. 1927 North American datum
10,000-foot grid based on Minnesota coordinate system, central zone
1000-meter Universal Transverse Mercator grid ticks,
zone 15, shown in blue
To place on the predicted North American Datum 1983
move the projection lines 8 meters north and
16 meters east as shown by dashed corner ticks

Map photospcted 1980
No major culture or drainage changes observed



THIS MAP COMPLIES WITH NATIONAL MAP ACCURACY STANDARDS
FOR SALE BY U. S. GEOLOGICAL SURVEY
DENVER, COLORADO 80225, OR RESTON, VIRGINIA 22092
A FOLDER DESCRIBING TOPOGRAPHIC MAPS AND SYMBOLS IS AVAILABLE ON REQUEST



ROAD CLASSIFICATION
Primary highway, all weather, Light-duty road, all weather,
hard surface, improved surface
Unimproved road, fair or dry
weather
State Route

WRIGHT, MINN.
46093F1-TF-024
1970
PHOTOINSPECTED 1980
DMA 7377 II NE - SERIES V872

