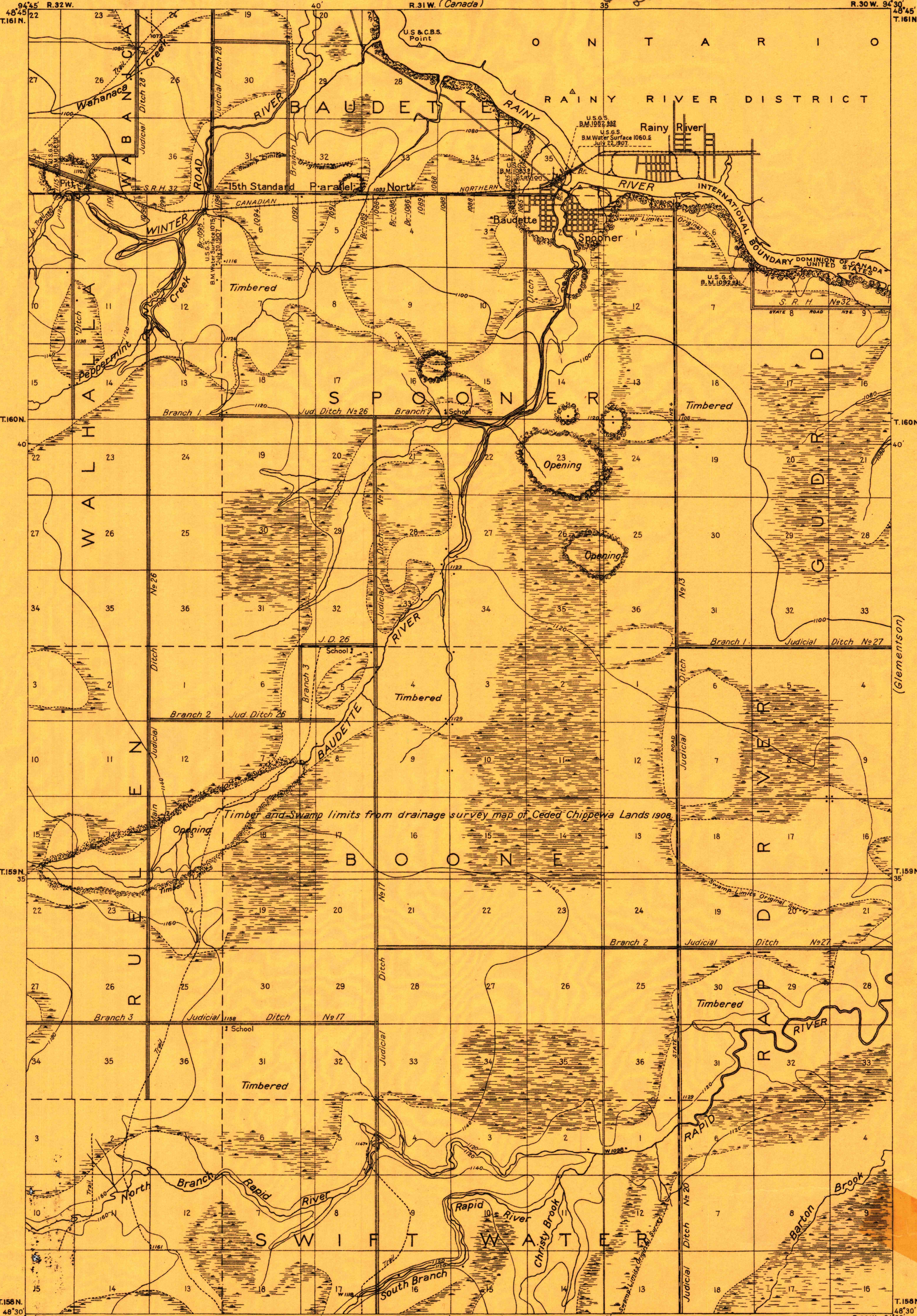
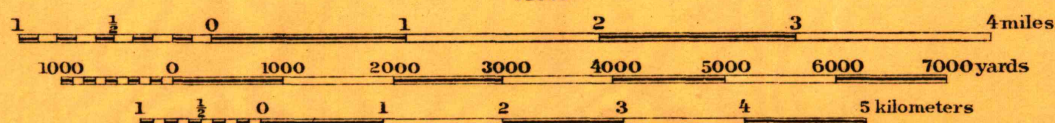


NOT MAPPED
PRIOR TO 1914
Covered by
Survey Ceded



Compiled in office of Department
Engineer Central Department 1919
from Drainage Survey maps of
Ceded Chippewa Lands, 1908
and of Beltrami County, 1918
and U.S. and Canada Boundary
Survey map, 1914

RETURN TO:
USGS AND HISTORICAL MAP ARCHIVES

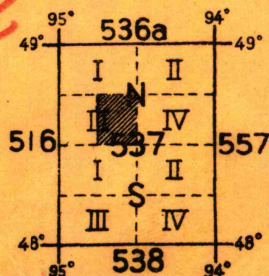


Contour Interval 20 feet

Datum is mean sea level

NOTE: OFFICERS USING THIS MAP WILL MARK HEREON CORRECTIONS AND ADDITIONS WHICH COME
TO THEIR ATTENTION AND MAIL DIRECT TO "THE CHIEF OF ENGINEERS, WASHINGTON, D.C."

BAUDETTE
MINN



TRUE NORTH
MAGNETIC NORTH
APPROXIMATE MEAN
DECLINATION 1921