

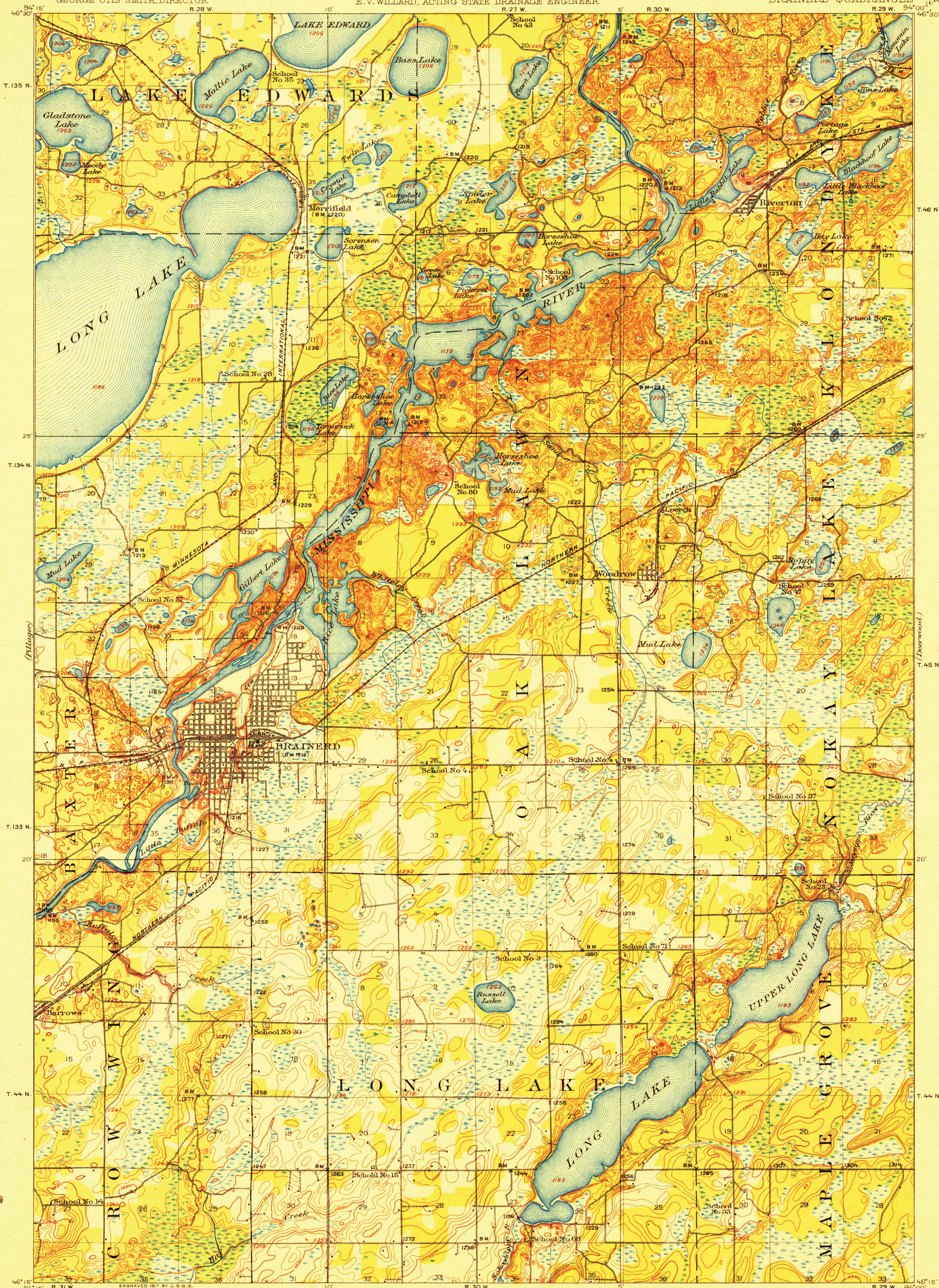
TOPOGRAPHY

STATE OF MINNESOTA

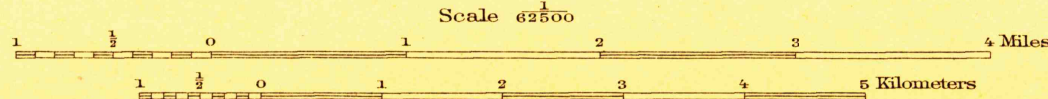
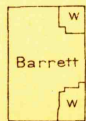
DEPARTMENT OF THE INTERIOR
FRANKLIN K. LANE, SECRETARY
U.S. GEOLOGICAL SURVEY
GEORGE OTIS SMITH, DIRECTOR

W. S. HAMMOND, GOVERNOR
J. A. O. PREUS, STATE AUDITOR
JULIUS A. SCHMAHL, SEC. OF STATE
E. V. WILLARD, ACTING STATE DRAINAGE ENGINEER

MINNESOTA
(CROW WING COUNTY)
BRAINERD QUADRANGLE



R. B. Marshall, Chief Geographer.
W. H. Herron, Geographer in charge.
Topography by F. B. Barrett and J. H. Wilson.
Control by U.S. Coast and Geodetic Survey,
Mississippi River Commission, E. L. McNair, and J. M. Ray.
Surveyed in 1914-1915.



Contour interval 10 feet.
Datum is mean sea level.

Edition of 1918.

BRAINERD

RETURN TO:
NWD HISTORICAL MAP ARCHIVES
USGS NATIONAL CENTER, MS-522
RESTON, VA 22092