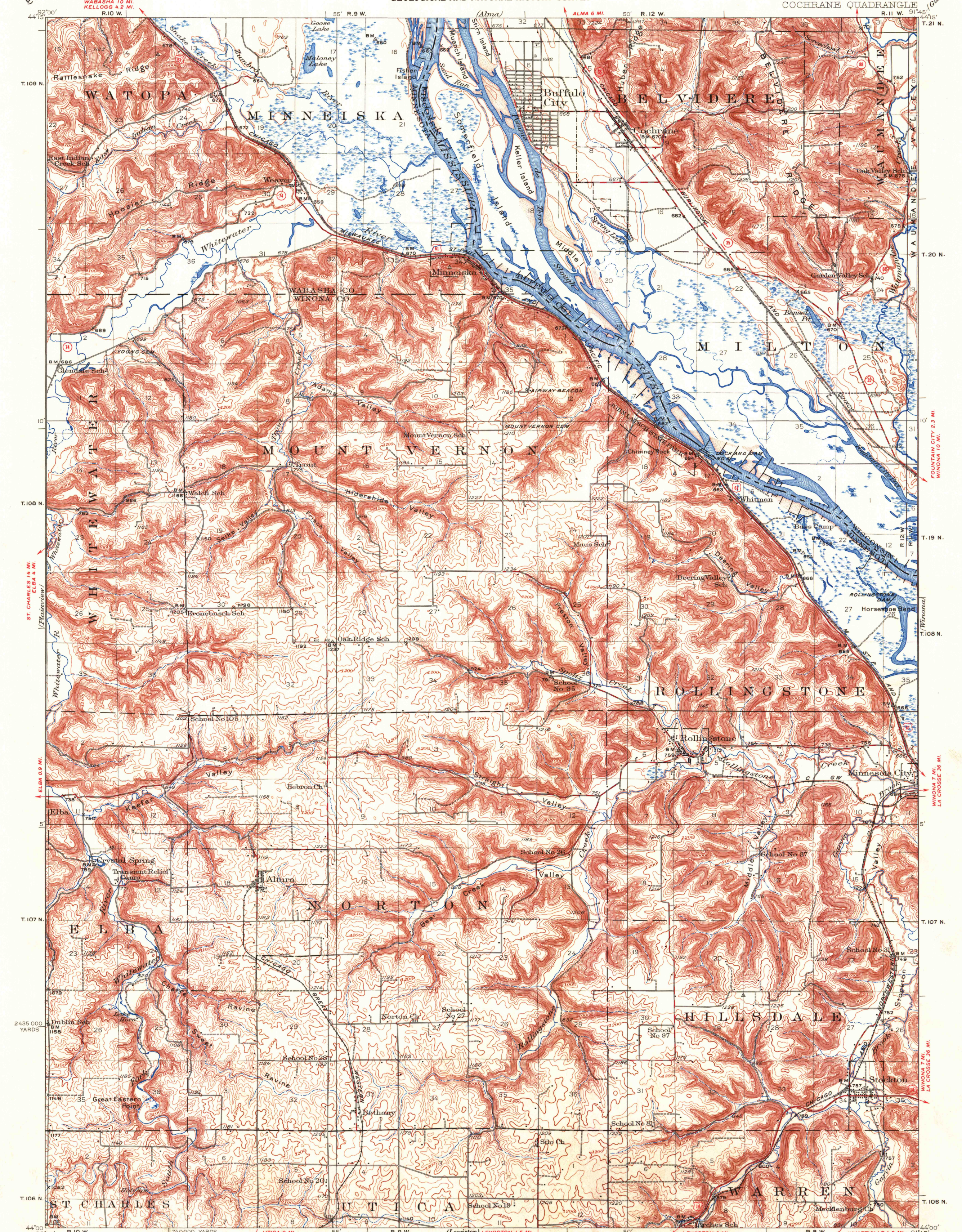


UNITED STATES
DEPARTMENT OF THE INTERIOR
GEOLOGICAL SURVEY

STATE OF WISCONSIN
GEOLOGICAL AND NATURAL HISTORY SURVEY

MINNESOTA-WISCONSIN
COCHRANE QUADRANGLE

MONDOVIA 2.7 MI.
CREAM 3.1 MI.



ST. CHARLES 14 MI.
ELBA 4 MI.

FOUNTAIN CITY 2.3 MI.
WINDONA 10 MI.

WINONA 7 MI.
LA CROSSE 36 MI.

WINONA 7 MI.
LA CROSSE 36 MI.

Topography by R.W. Burchard, F.W. Cook, Paul Blake, J.H. Taub, D.W. Weber, and J.T. Gist. Culture and drainage in part compiled from aerial photographs taken by Air Corps, U.S. Army Control by U.S. Geological Survey, Corps of Engineers, U.S. Army, U.S. Coast and Geodetic Survey, and Mississippi River Commission. Surveyed in 1928 and 1934.

SCALE 1:62,500
CONTOUR INTERVAL 20 FEET
DATUM IS MEAN SEA LEVEL

U.S.G.S. COCHRANE, MINN.-WIS.
Historical File
Topographic Division
N4400-W9145/15
1934

ROAD CLASSIFICATION
 HARD SURFACE ALL WEATHER ROADS DRY WEATHER ROADS
 Heavy-duty 4 LANE LANE Improved dirt
 Medium-duty 4 LANE LANE Unimproved dirt

FOR SALE BY U.S. GEOLOGICAL SURVEY, DENVER, COLORADO 80225 OR WASHINGTON, D. C. 20242
 AND WISCONSIN GEOLOGICAL AND NATURAL HISTORY SURVEY, MADISON, WISCONSIN 53706
 A FOLDER DESCRIBING TOPOGRAPHIC MAPS AND SYMBOLS IS AVAILABLE ON REQUEST

U.S.G.S. TOPOGRAPHIC DIVISION

1755
JUL 9 1968