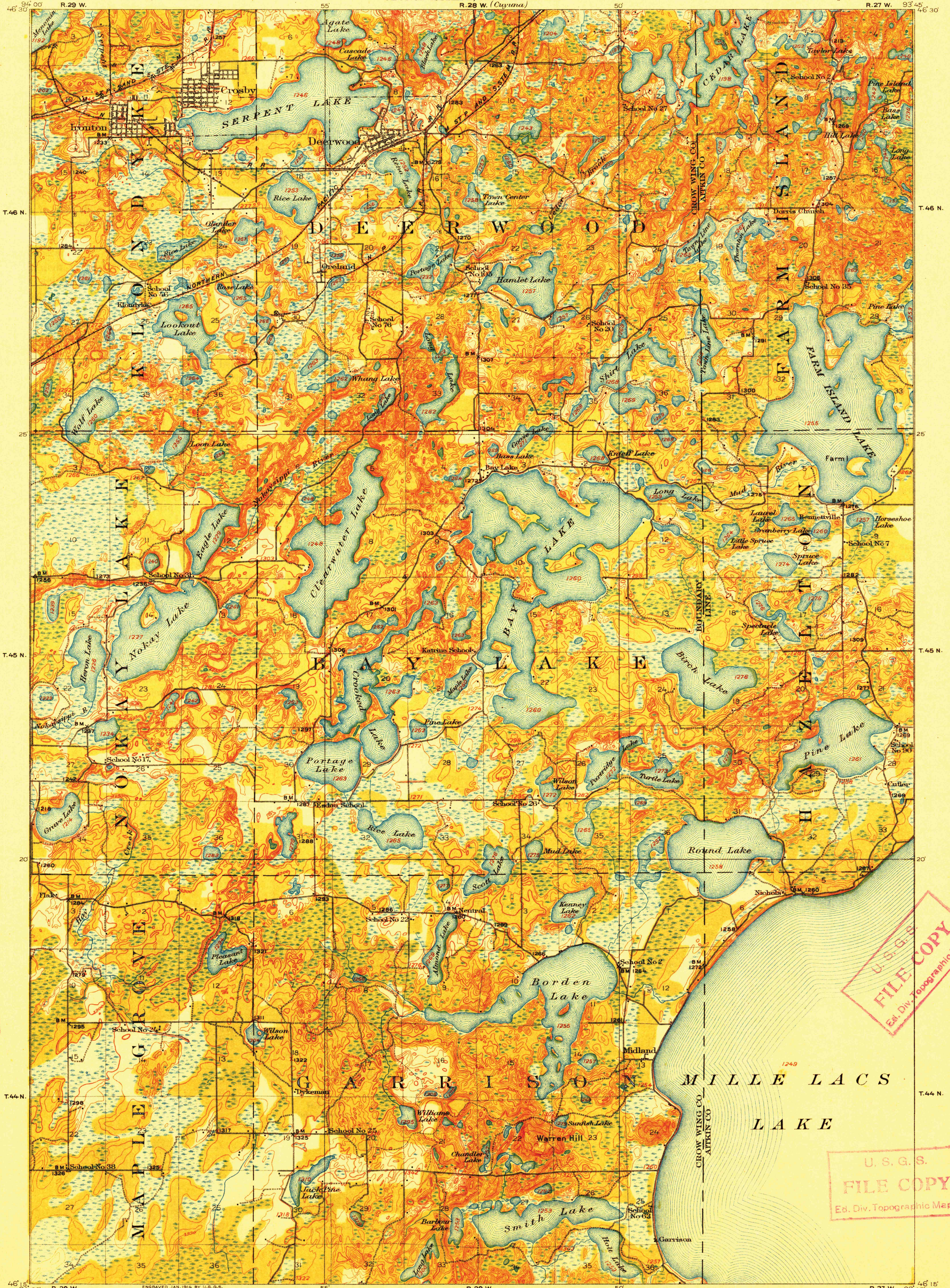


TOPOGRAPHY

STATE OF MINNESOTA
A. O. EBERHART, GOVERNOR
SAMUEL G. IVERSON, STATE AUDITOR
JULIUS A. SCHMAHL, SEC. OF STATE
GEORGE A. RALPH, CHIEF ENGINEER

U.S. GEOLOGICAL SURVEY
GEORGE OTIS SMITH, DIRECTOR

MINNESOTA
DEERWOOD QUADRANGLE



U.S.G.S.
FILE COPY
Ed. Div. Topographic Maps.

U.S.G.S.
FILE COPY
Ed. Div. Topographic Maps.

U.S.G.S.
FILE COPY
Ed. Div. Topographic Maps.

R.B. Marshall, Chief Geographer.
W.H. Herron, Geographer in charge.
Topography by C.L. Sadler, O.H. Nelson, E.L. Hain,
F.B. Barrett, J.H. Wilson, L.B. Roberts and W.A. Reiter.
Control by E.L. McNair and J.M. Fay.
Surveyed in 1912.

Scale 62500
1 2 3 4 Miles
1 2 3 4 5 Kilometers
Contour interval 10 feet.
Datum is mean sea level.

Edition of June 1914.

SEP 30 1914 3393

USGS
Historical File
Topographic Division

DEERWOOD, Minn.