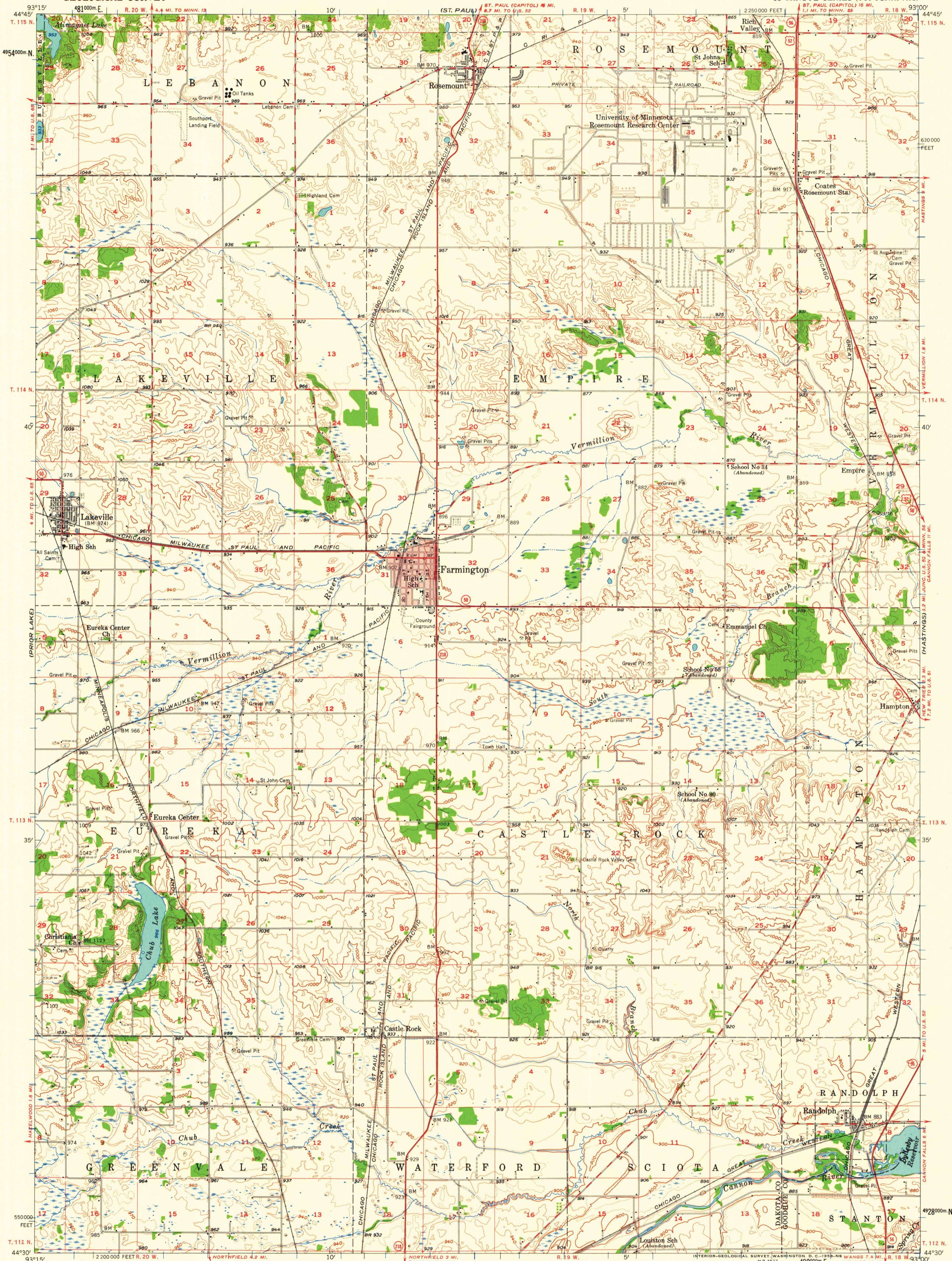


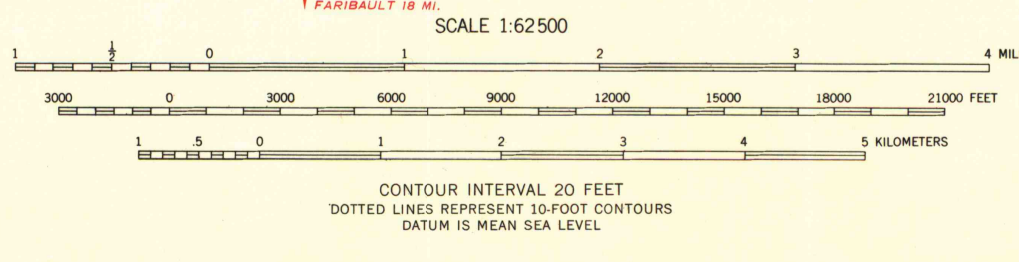
UNITED STATES
DEPARTMENT OF THE INTERIOR
GEOLOGICAL SURVEY

FARMINGTON QUADRANGLE
MINNESOTA
15 MINUTE SERIES (TOPOGRAPHIC)

(ST. PAUL PARK)
1:24,000



Mapped, edited, and published by the Geological Survey
Control by USGS and USC&GS
Topography from aerial photographs by Kesh plotter
and by planetable surveys 1957. Aerial photographs taken 1953
Polyconic projection. 1927 North American datum
10,000-foot grid based on Minnesota coordinate system, south zone
1000-meter Universal Transverse Mercator grid ticks,
zone 15, shown in blue
Red tint indicates area in which only
landmark buildings are shown



ROAD CLASSIFICATION

Heavy-duty	Light-duty
Medium-duty	Unimproved dirt
U.S. Route	State Route



FARMINGTON, MINN.
N 4430-W 9300/15
1957

MAP AND AIR PHOTO LIBRARY