

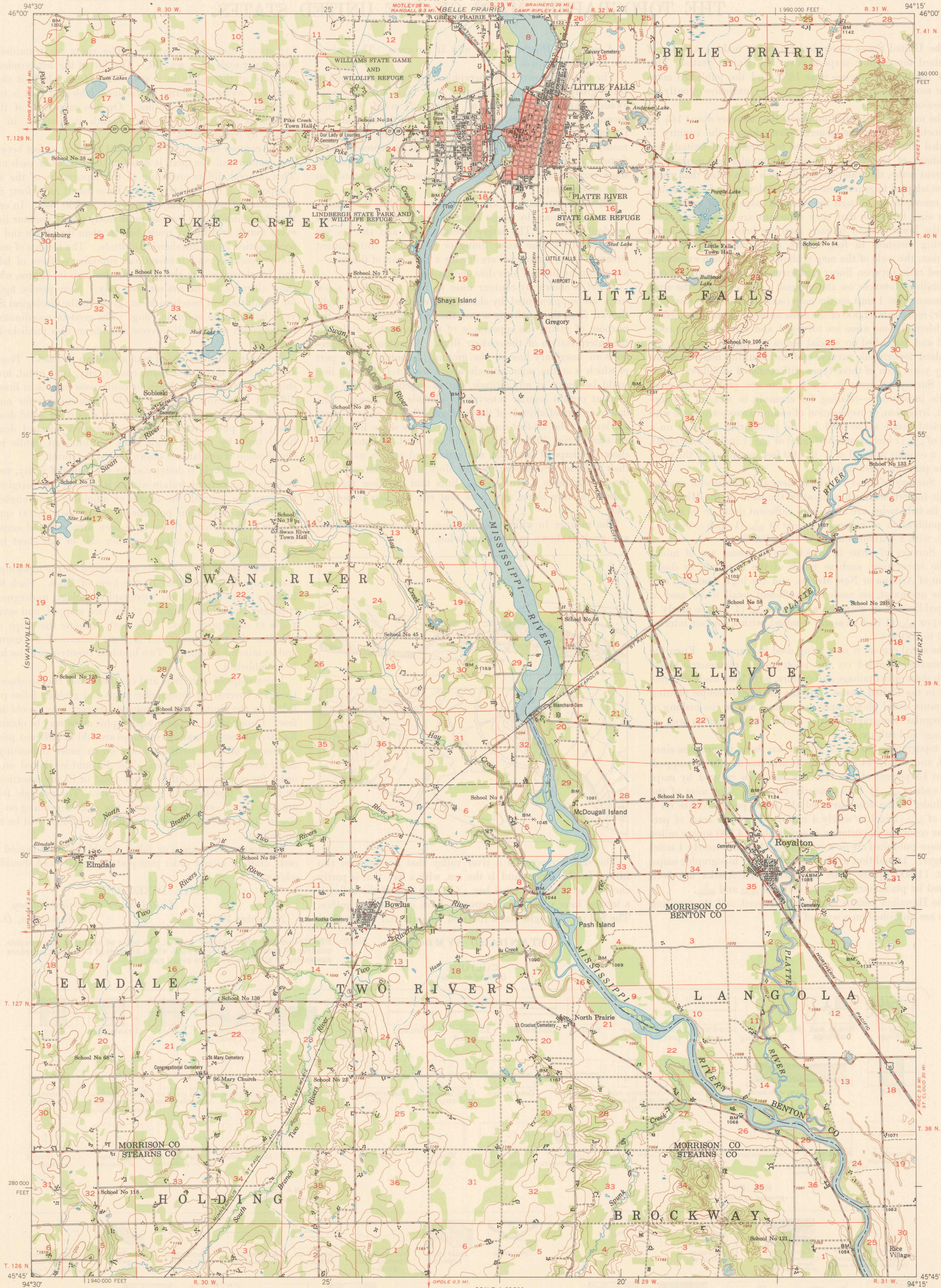
(CUSHING)

UNITED STATES  
DEPARTMENT OF THE INTERIOR  
GEOLOGICAL SURVEY

UNITED STATES  
DEPARTMENT OF THE ARMY  
CORPS OF ENGINEERS

LITTLE FALLS QUADRANGLE  
MINNESOTA  
15 MINUTE SERIES (TOPOGRAPHIC)

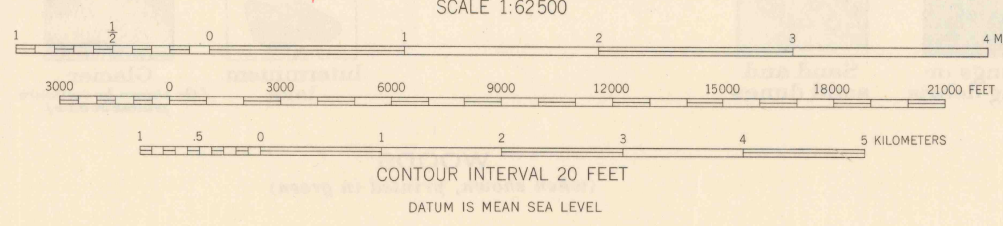
(LASTRUP)



**FILE COPY**  
MAY 17 1950  
MAP INFORMATION OFFICE  
GEOLOGICAL SURVEY

Mapped by the Army Map Service  
Edited and published by the Geological Survey  
Control by USGS, USC&GS, and AMS  
Topography from aerial photographs by multiplex methods  
Aerial photographs taken 1947. Field check 1948  
Polyconic projection. 1927 North American datum  
10,000-foot grid based on Minnesota coordinate system,  
central zone  
No distinction is made between dwellings, barns,  
commercial and industrial buildings  
Red tint indicates area in which only  
landmark buildings are shown

TRUE NORTH  
MAGNETIC NORTH  
APPROXIMATE MEAN  
DECLINATION, 1948



**ROAD CLASSIFICATION**  
HARD-SURFACE ALL WEATHER ROADS DRY WEATHER ROADS  
Heavy-duty ——— **LANE 3 LANE** Improved dirt ———  
Medium-duty ——— **LANE 2 LANE** Unimproved dirt ———  
Loose-surface, graded, or narrow hard-surface - - - - -  
U. S. Route      State Route

THIS MAP COMPLIES WITH NATIONAL MAP ACCURACY STANDARDS  
FOR SALE BY U. S. GEOLOGICAL SURVEY, FEDERAL CENTER, DENVER, COLORADO OR WASHINGTON 25, D. C.

LITTLE FALLS, MINN.  
N4545-W9415/15  
EDITION OF 1950