



RETURN TO:
USGS HISTORICAL MAP ARCHIVES

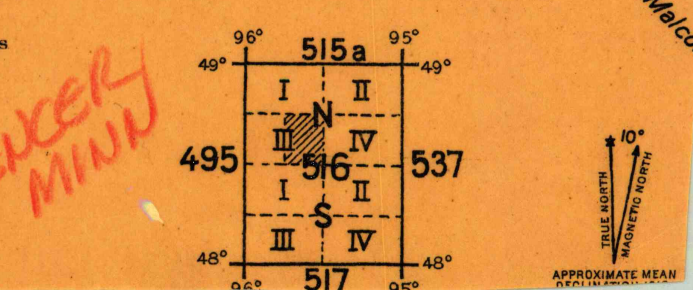
Compiled in office of Department
Engineer, Central Department, 1918.

Sources and dates of data used:
Original Land Plats
W.W. Hixon & Co. State Atlas of Minnesota, 1915.
Drainage Survey Map of ceded Chippewa Lands in Minnesota, accompanying
Doc. 27, H. of R., 61st Congress, 1st session, 1908.
Drainage Map, Beltrami Co. furnished by R.K. Miller, Co. Surveyor, Sept. 1918.
" " " by J. Bourgeois, Bemidji, Minn., 1913, revised to 1917.
Roseau Co. Drainage Map by W.H. Johnson, St. Paul, Minn.
State Highway Commissioner's Map of Roseau County.
Post Route Map of State of Minnesota, and Postal Guide.

RETURN TO:
USGS HISTORICAL MAP ARCHIVES

Scale 1/62500
Contour Interval 20 feet
Datum is mean sea level

NOTE: OFFICERS USING THIS MAP WILL MARK HEREON CORRECTIONS AND ADDITIONS WHICH COME TO THEIR ATTENTION AND MAIL DIRECT TO "THE CHIEF OF ENGINEERS, WASHINGTON, D. C."



(Malco)