



Compiled in office of Department
Engineer, Central Department, 1919.

RETURN TO:
USGS NMD HISTORICAL MAP ARCHIVES

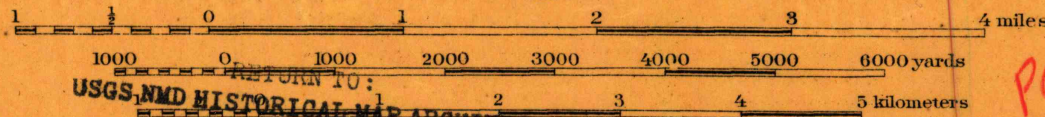
USGS NMD HISTORICAL MAP ARCHIVES

Contour Interval 20 feet

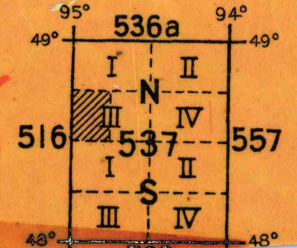
Datum is mean sea level

NOTE: OFFICERS USING THIS MAP WILL MARK HEREON CORRECTIONS AND ADDITIONS WHICH COME
TO THEIR ATTENTION AND MAIL DIRECT TO "THE CHIEF OF ENGINEERS, WASHINGTON, D.C."

Scale 1/62500



Photolith. & printed at U.S. Lake Survey Office, Detroit, Mich.



TRUE NORTH
MAGNETIC NORTH