

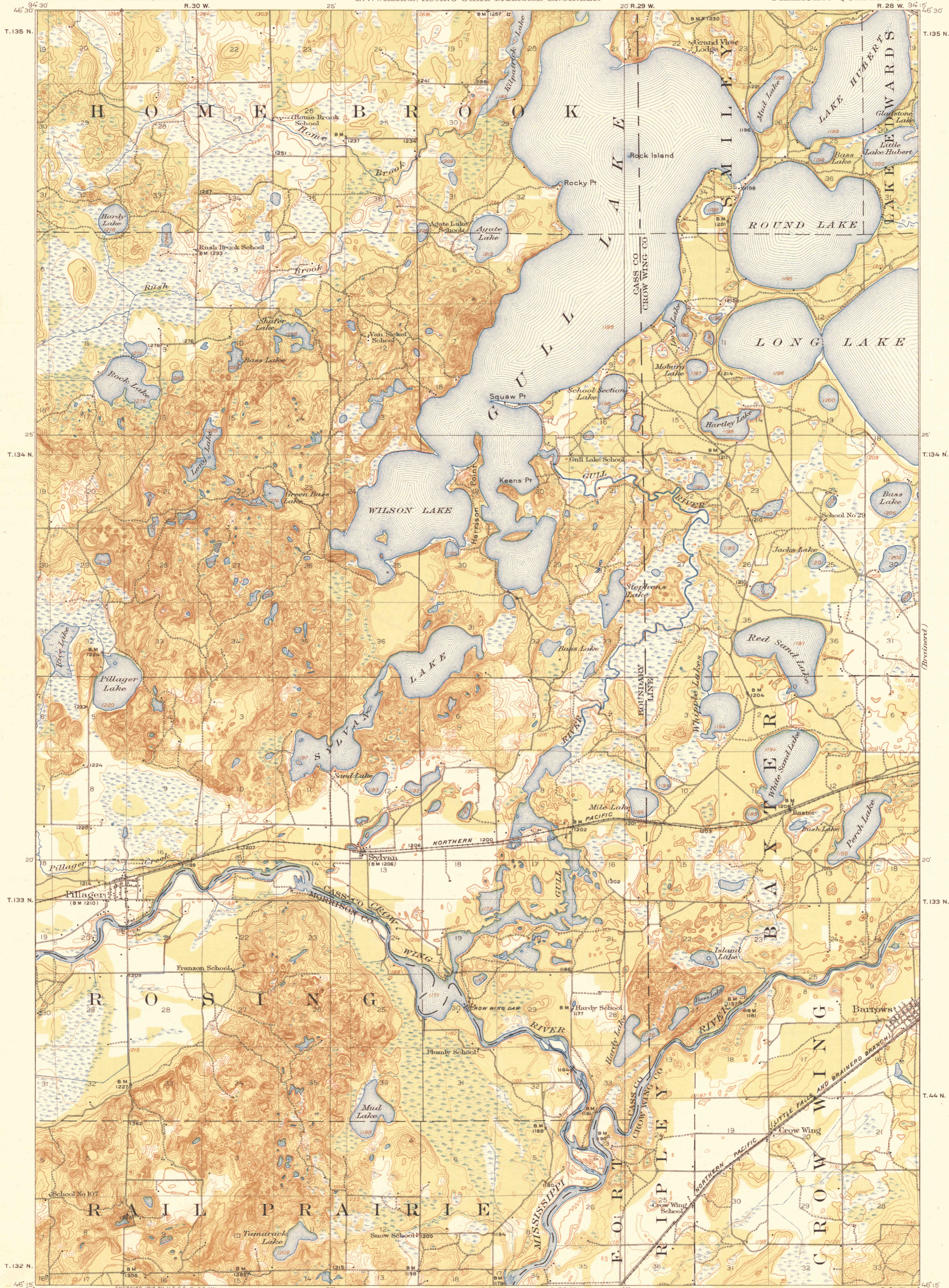
TOPOGRAPHY

STATE OF MINNESOTA

DEPARTMENT OF THE INTERIOR
FRANKLIN K. LANE, SECRETARY
U.S. GEOLOGICAL SURVEY
GEORGE OTIS SMITH, DIRECTOR

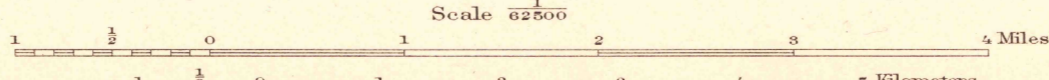
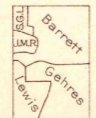
W. S. HAMMOND, GOVERNOR } STATE
J. A. O. PREUS, STATE AUDITOR } DRAINAGE
JULIUS A. SCHMAHL, SEC. OF STATE } COMMISSION
E. V. WILLARD, ACTING STATE DRAINAGE ENGINEER

MINNESOTA
PILLAGER QUADRANGLE

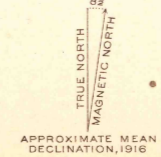


W. H. Herron, Acting Chief Geographer,
Glenn S. Smith, Topographic Engineer in charge,
Topography by J. L. Lewis, S. G. Lunde,
F. B. Barrett, J. M. Rawls, and W. S. Gehres.
Control by U.S. Coast and Geodetic Survey,
Mississippi River Commission, J. H. Wilson, and
C. E. Mills.
Surveyed in 1916.

SURVEYED IN COOPERATION WITH THE STATE OF MINNESOTA.



Scale 62500
Contour interval 10 feet.
Datum is mean sea level.



Edition of 1919.

PILLAGER