

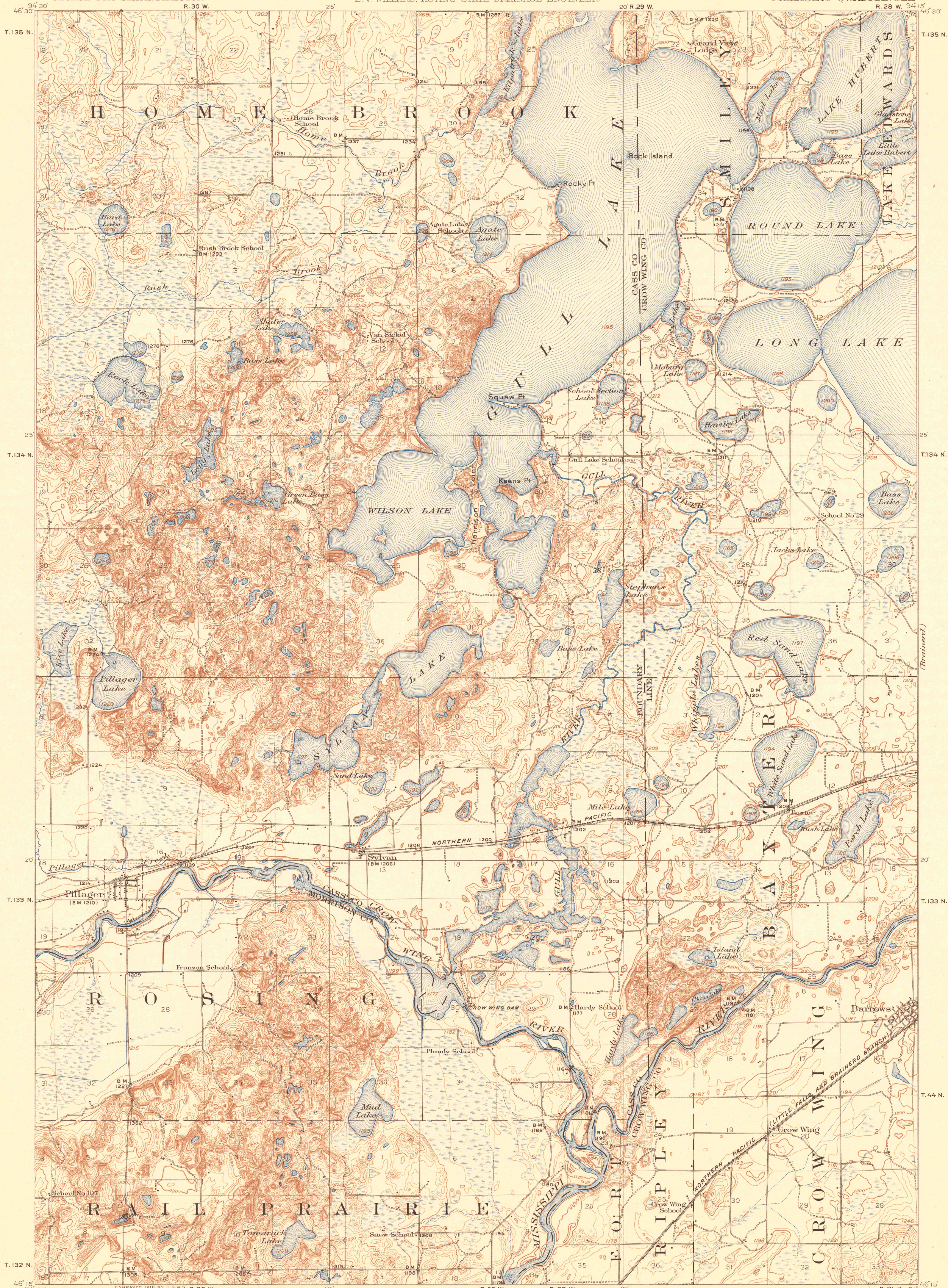
TOPOGRAPHY

STATE OF MINNESOTA

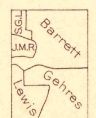
DEPARTMENT OF THE INTERIOR
FRANKLIN K. LANE, SECRETARY
U. S. GEOLOGICAL SURVEY
GEORGE OTIS SMITH, DIRECTOR

W. S. HAMMOND, GOVERNOR. STATE
J. A. O. PREUS, STATE AUDITOR. DRAINAGE
JULIUS A. SCHMAHL, SEC. OF STATE. COMMISSION
E. V. WILLARD, ACTING STATE DRAINAGE ENGINEER.

MINNESOTA
PILLAGER QUADRANGLE
R. 28 W. 94



ENGRAVED 1916 BY U.S.G.S. R. 30 W.
W. H. Herron, Acting Chief Geographer.
Glenn S. Smith, Topographic Engineer in charge.
Topography by J. L. Lewis, S. G. Lund, F. B. Barrett, J. M. Rawls, and W. S. Gehres.
Control by U.S. Coast and Geodetic Survey, Mississippi River Commission, J. H. Wilson, and C. E. Mills.
Surveyed in 1916.



Scale 62500
0 1 2 3 4 Miles
0 1 2 3 4 5 Kilometers
Contour interval 10 feet.
Datum is mean sea level.

TRUE NORTH
APPROXIMATE MEAN
DECLINATION, 1916

Edition of 1919.

PILLAGER



SURVEYED IN COOPERATION WITH THE STATE OF MINNESOTA.