

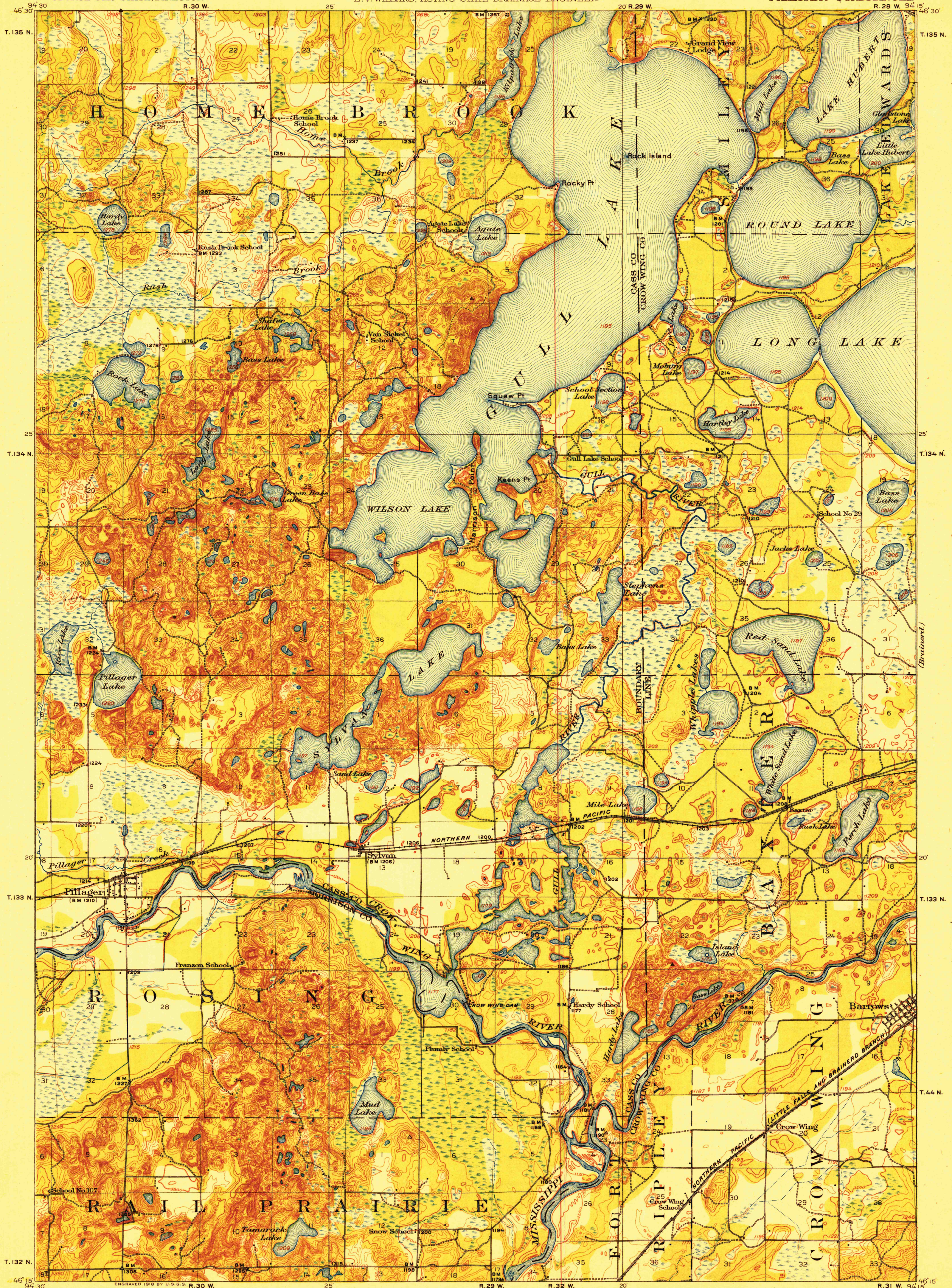
TOPOGRAPHY

STATE OF MINNESOTA

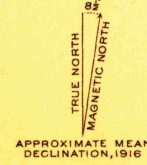
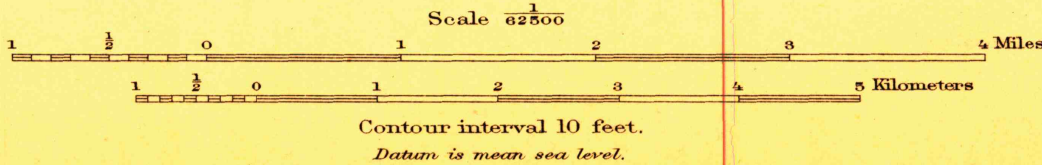
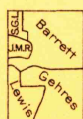
DEPARTMENT OF THE INTERIOR
FRANKLIN K. LANE, SECRETARY
U. S. GEOLOGICAL SURVEY
GEORGE OTIS SMITH, DIRECTOR

W. S. HAMMOND, GOVERNOR
J. A. O. PREUS, STATE AUDITOR
JULIUS A. SCHMAHL, SEC. OF STATE
E. V. WILLARD, ACTING STATE DRAINAGE ENGINEER

MINNESOTA
PILLAGER QUADRANGLE



W. H. Herron, Acting Chief Geographer.
Glenn S. Smith, Topographic Engineer in charge.
Topography by J. L. Lewis, S. G. Lunde,
F. B. Barrett, J. M. Rawls, and W. S. Gehres.
Control by U. S. Coast and Geodetic Survey,
Mississippi River Commission, J. H. Wilson, and
C. E. Mills.
Surveyed in 1916.



Edition of 1919.

PILLAGER

RETURN TO:
NHD HISTORICAL MAP ARCHIVES
USGS NATIONAL CENTER, MS-522
RESTON, VA 22092