

(Ponemah)

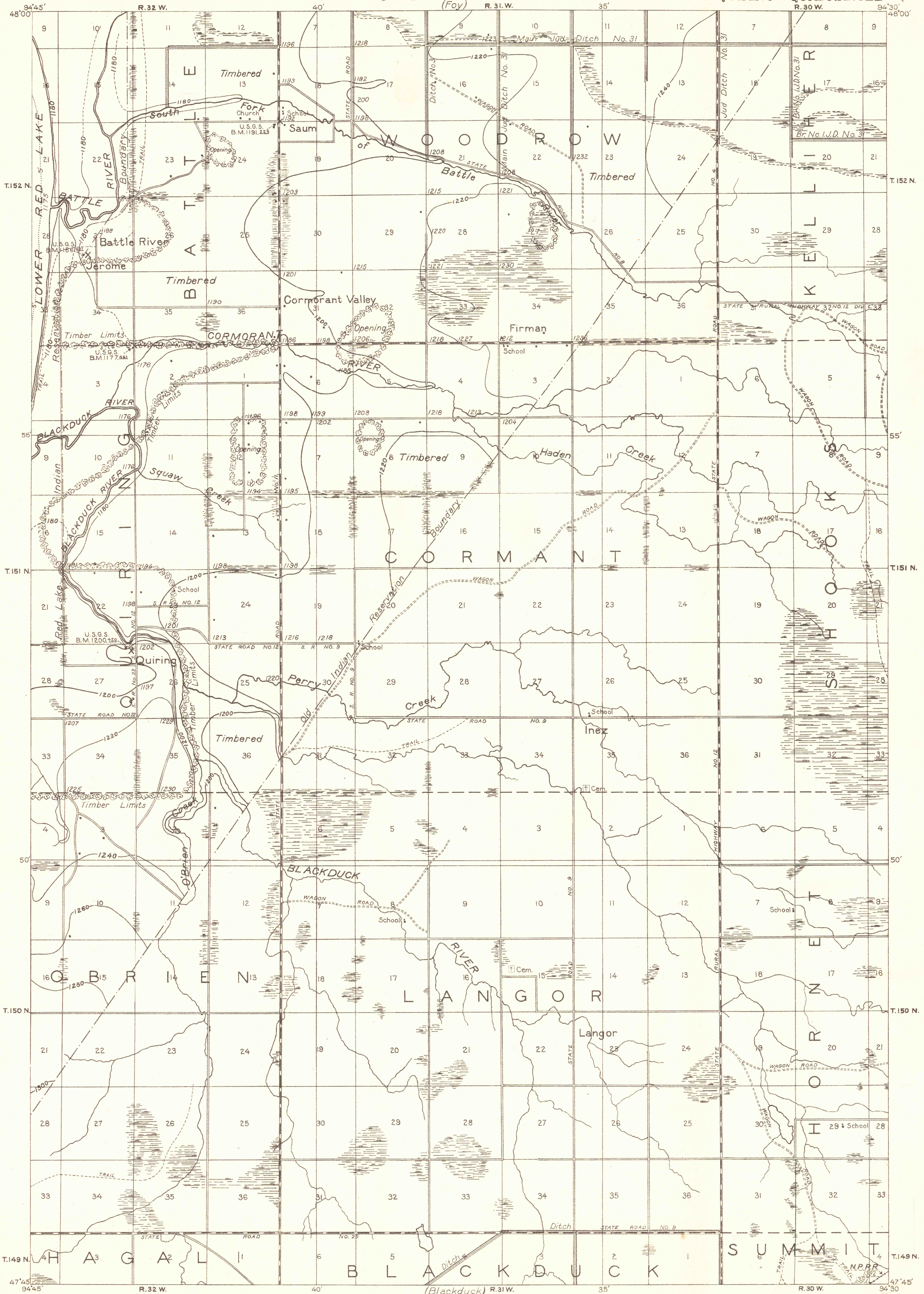
CORPS OF ENGINEERS, U. S. ARMY  
PROGRESSIVE MILITARY MAP

# ADVANCE SHEET 538-N-1-E/2

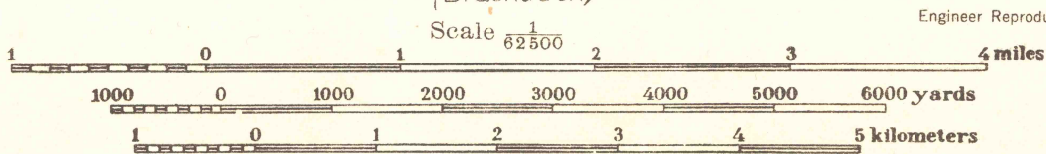
NOT MAPPED BY U. S. G. S.  
PRIOR TO 1921

MINNESOTA  
(BELTRAMI COUNTY)  
QUIRING QUADRANGLE

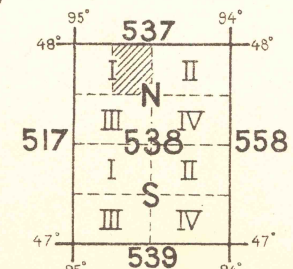
(Norden)



Compiled in office of Department  
Engineer, Central Department, 1919.



NOTE: OFFICERS USING THIS MAP WILL MARK HEREON CORRECTIONS AND ADDITIONS WHICH COME TO THEIR ATTENTION AND MAIL DIRECT TO 'THE CHIEF OF ENGINEERS, WASHINGTON, D. C.'



APPROXIMATE MEAN  
DECLINATION 1919

QUIRING, MINN.