

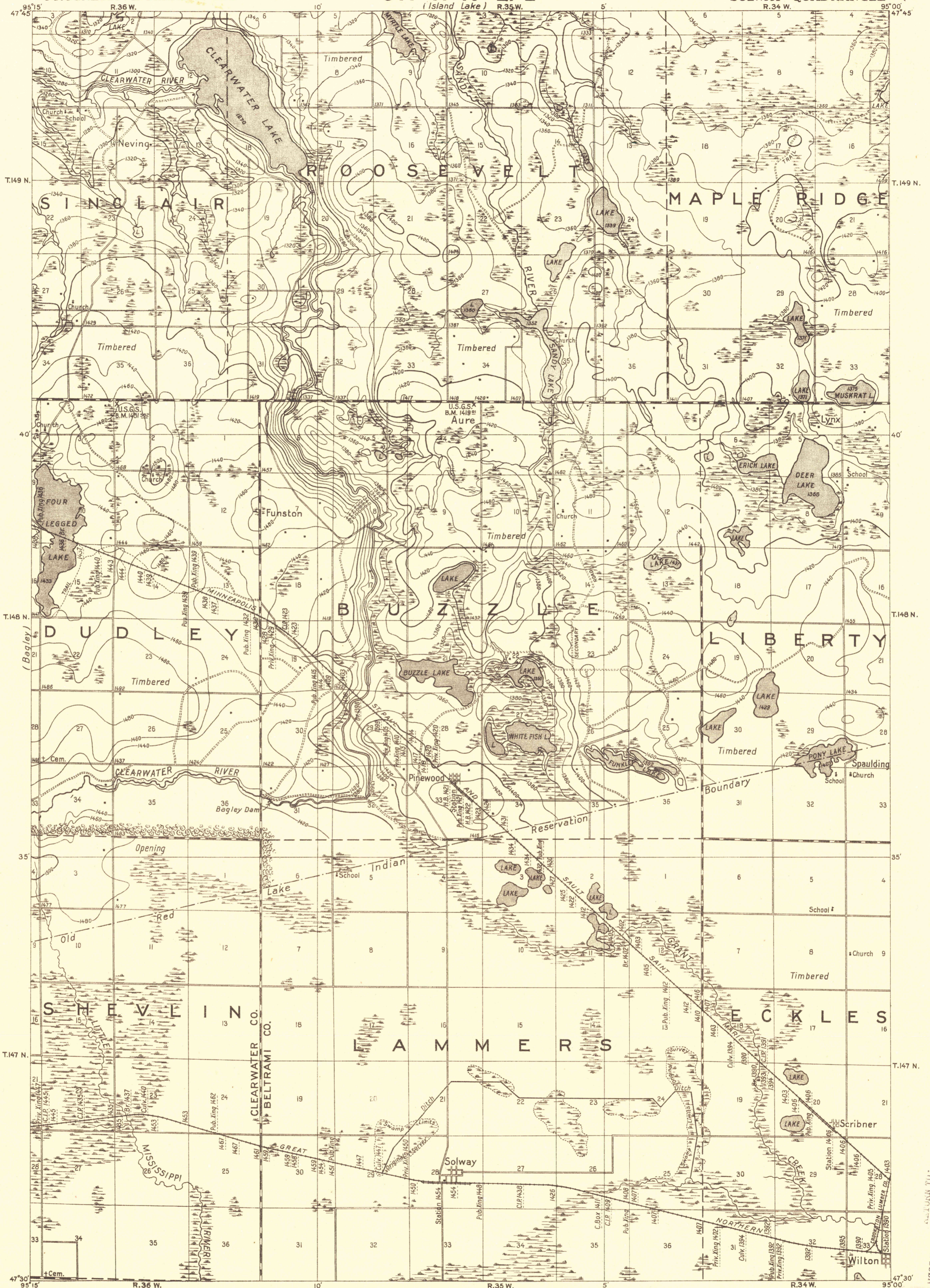
(Churnes)

CORPS OF ENGINEERS, U.S. ARMY
PROGRESSIVE MILITARY MAP

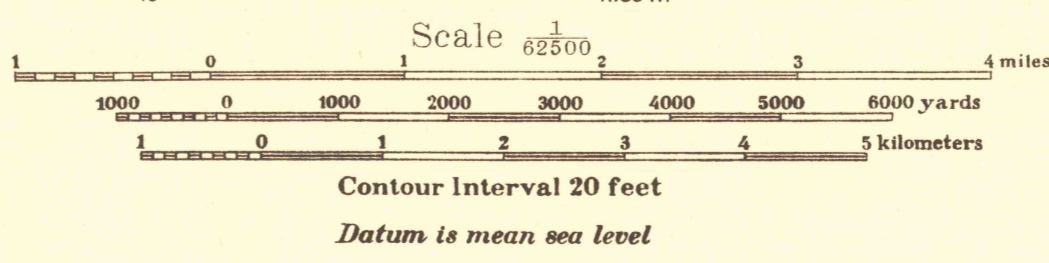
ADVANCE SHEET 517-N-IV-E/2

MINNESOTA
SOLWAY QUADRANGLE

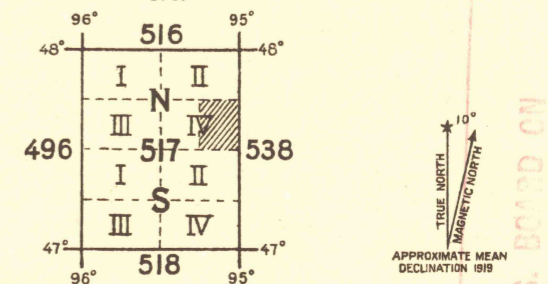
(Nebish)



Compiled in office of Department Engineer, Central Department, in 1919 from the following sources:
 Original Land Plat: Right of Way Plans and profiles of Great Northern and Sault Saint Marie; Drainage Survey map of the Ceded Chippewa lands in Minnesota, accompanying Document 27, H. of R., 61st Congress, 1st session, 1908; W. H. Hixson & Co. of Minnesota, 1915; State Highway Commission of Clearwater County; Drainage map of Clearwater County by F. Brown, 1913, revised to 1917; Brown, Treacy & Sperr, 1910; Route maps of Bagley vicinity; 1910 Census of Minnesota and



Engineer Reproduction Plant, U. S. Army, Washington Barracks, D. C.



NOTE: OFFICERS USING THIS MAP WILL MARK HEREON CORRECTIONS AND ADDITIONS WHICH COME TO THEIR ATTENTION AND MAIL DIRECT TO 'THE CHIEF OF ENGINEERS, WASHINGTON, D. C.'

U.S. GOVERNMENT PRINTING OFFICE: 1919

SOLWAY

U.S. GOVERNMENT PRINTING OFFICE: 1919