

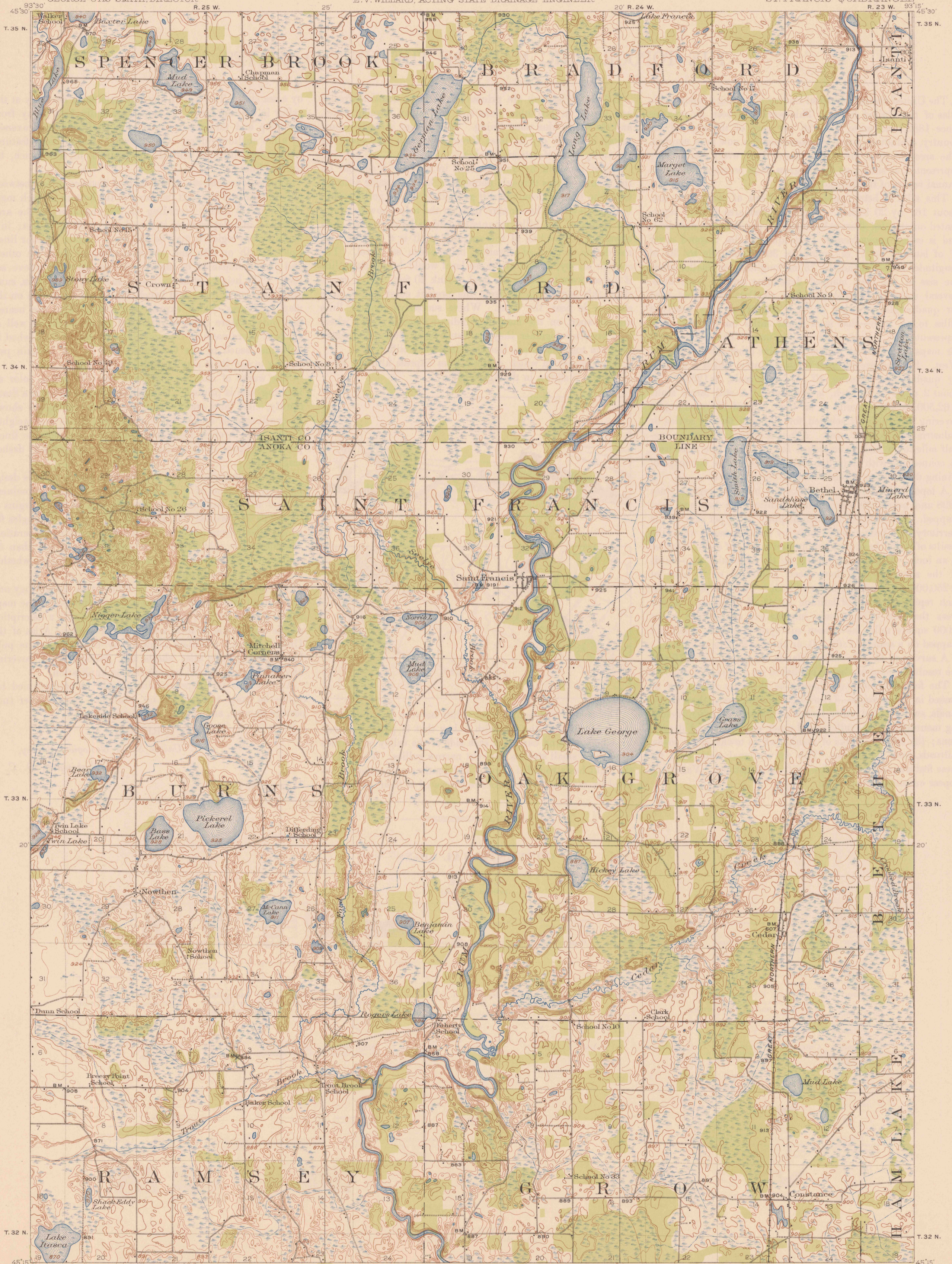
TOPOGRAPHY

STATE OF MINNESOTA

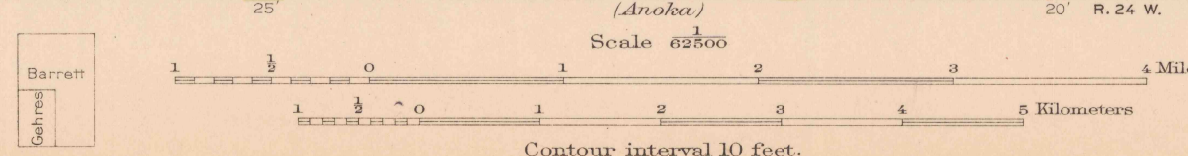
DEPARTMENT OF THE INTERIOR
FRANKLIN K. LANE, SECRETARY
U.S. GEOLOGICAL SURVEY
GEORGE OTIS SMITH, DIRECTOR

W. S. HAMMOND, GOVERNOR
J. A. O. PREUS, STATE AUDITOR
JULIUS A. SCHMAHL, SEC. OF STATE
E. V. WILLARD, ACTING STATE DRAINAGE ENGINEER

MINNESOTA
ST. FRANCIS QUADRANGLE



W. H. Hamon, Acting Chief Geographer
Glenn S. Smith, Topographic Engineer in charge
Topography by F. B. Barrett and W. S. Gehres
Control by Mississippi River Commission
J. H. Willson, and C. E. Mills
Surveyed in 1915-1916.



ENGRAVED 1916 BY U.S.G.S.
Edition of 1919.
APPROXIMATE MEAN DECLINATION, 1916
ST. FRANCIS

SURVEYED IN COOPERATION WITH THE STATE OF MINNESOTA.