

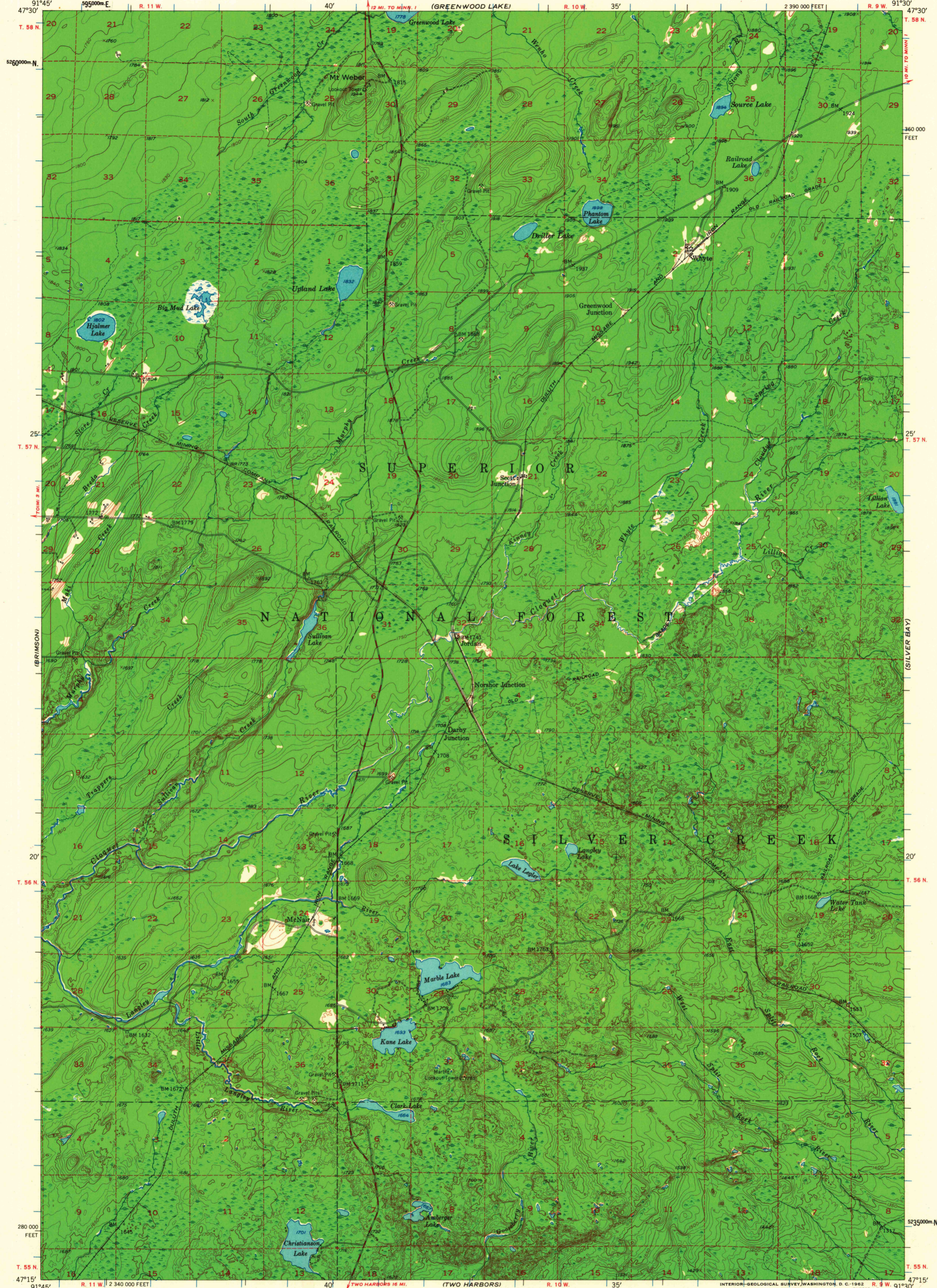
(BABELT SE)  
1:24,000

UNITED STATES  
DEPARTMENT OF THE INTERIOR  
GEOLOGICAL SURVEY

STATE OF MINNESOTA  
IRON RANGE RESOURCES AND REHABILITATION COMMISSION

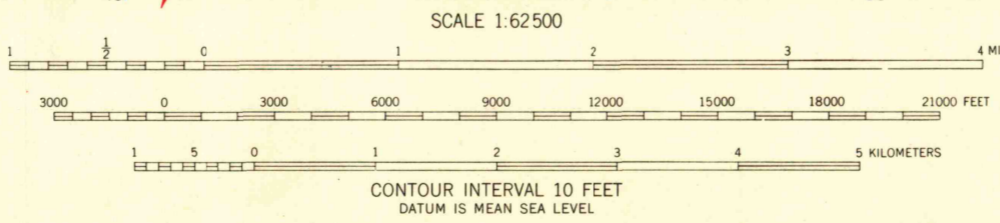
WHYTE QUADRANGLE  
MINNESOTA-LAKE CO.  
15 MINUTE SERIES (TOPOGRAPHIC)

(ISABELLA)



Mapped, edited, and published by the Geological Survey  
Control by USGS and USC&GS  
Topography from aerial photographs by Kelsh plotter  
Aerial photographs taken 1950. Field check 1953  
Polyconic projection. 1927 North American datum  
10,000-foot grid based on Minnesota datum system,  
north zone  
Dashed land lines indicate approximate locations  
1000-meter Universal Transverse Mercator grid ticks,  
zone 15, shown in blue

TRUE NORTH  
MAGNETIC NORTH  
APPROXIMATE MEAN  
DECLINATION, 1953



ROAD CLASSIFICATION  
Medium-duty ——— Light-duty ———  
Unimproved dirt - - - - -



THIS MAP COMPLIES WITH NATIONAL MAP ACCURACY STANDARDS  
FOR SALE BY U. S. GEOLOGICAL SURVEY, DENVER 25, COLORADO OR WASHINGTON 25, D. C.  
A FOLDER DESCRIBING TOPOGRAPHIC MAPS AND SYMBOLS IS AVAILABLE ON REQUEST

WHYTE, MINN.  
N4715-W9130/15  
1953  
USGS  
Historical File  
Topographic Division

JAN 2 5 1963

3190