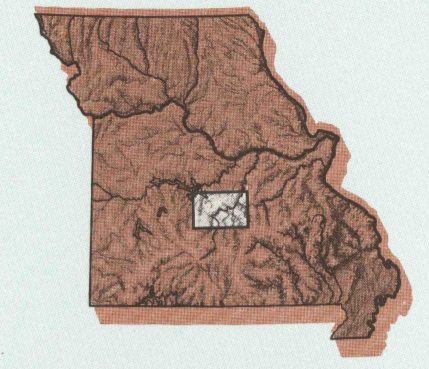


Lebanon

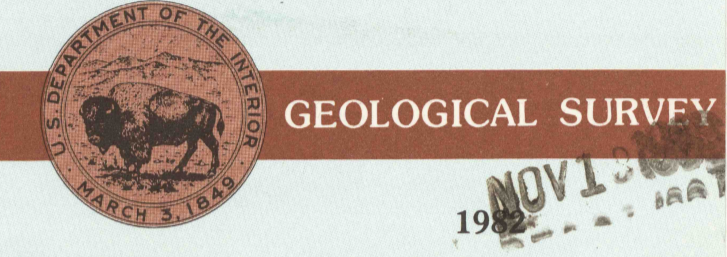
MISSOURI

1:100 000-scale metric topographic map



30 X 60 MINUTE QUADRANGLE SHOWING

- Contours and elevations in meters
- Highways, roads and other manmade structures
- Water features
- Woodland areas
- Geographic names



Produced by the United States Geological Survey
 Compiled from USGS 1:24 000-scale topographic maps dated 1954-1982. Planimetry revised from aerial photographs taken 1978 and other source data. Revised information not field checked. Map edited 1982.
 Projection and 10,000 meter grid, zone 15 Universal Transverse Mercator
 22 000-foot grid ticks based on Missouri coordinate system, central zone
 1927 North American Datum
 To place on the projected North American Datum 1983 move the projection lines 2 meters south and 15 meters east
 There may be private inholdings within the boundaries of the National or State reservations shown on this map

CONTOUR INTERVAL 20 METERS
 NATIONAL GEODETIC VERTICAL DATUM OF 1929
 ELEVATIONS SHOWN TO THE NEAREST METER

THIS MAP COMPLIES WITH NATIONAL MAP ACCURACY STANDARDS

CONVERSION TABLE		DECLINATION DIAGRAM		ADJOINING MAPS		
Meters	Feet	Miles		1	2	3
1	3.2808	0° 00' 00"		1	2	3
2	6.5617	0° 00' 00"		4	5	6
3	9.8425	0° 00' 00"		7	8	9
4	13.1234	0° 00' 00"				
5	16.4042	0° 00' 00"				
6	19.6850	0° 00' 00"				
7	22.9659	0° 00' 00"				
8	26.2467	0° 00' 00"				
9	29.5275	0° 00' 00"				
10	32.8084	0° 00' 00"				

To convert meters to feet multiply by 3.2808
 To convert feet to meters multiply by 0.3048

UTM grid convergence (km) at center of map
 declination (m) at center of map
 Diagram is approximate

1 Harry S. Truman
 2 Lake of the Ozarks
 3
 4 Bolivar
 5 Springfield
 6 Mountain Grove
 7
 8

FOR SALE BY U.S. GEOLOGICAL SURVEY, DENVER, COLORADO 80225
 OR RESTON, VIRGINIA 22092

Topographic Map Symbols

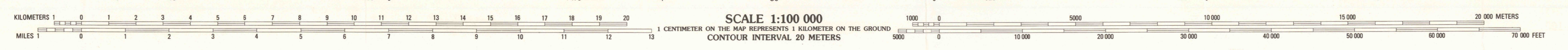
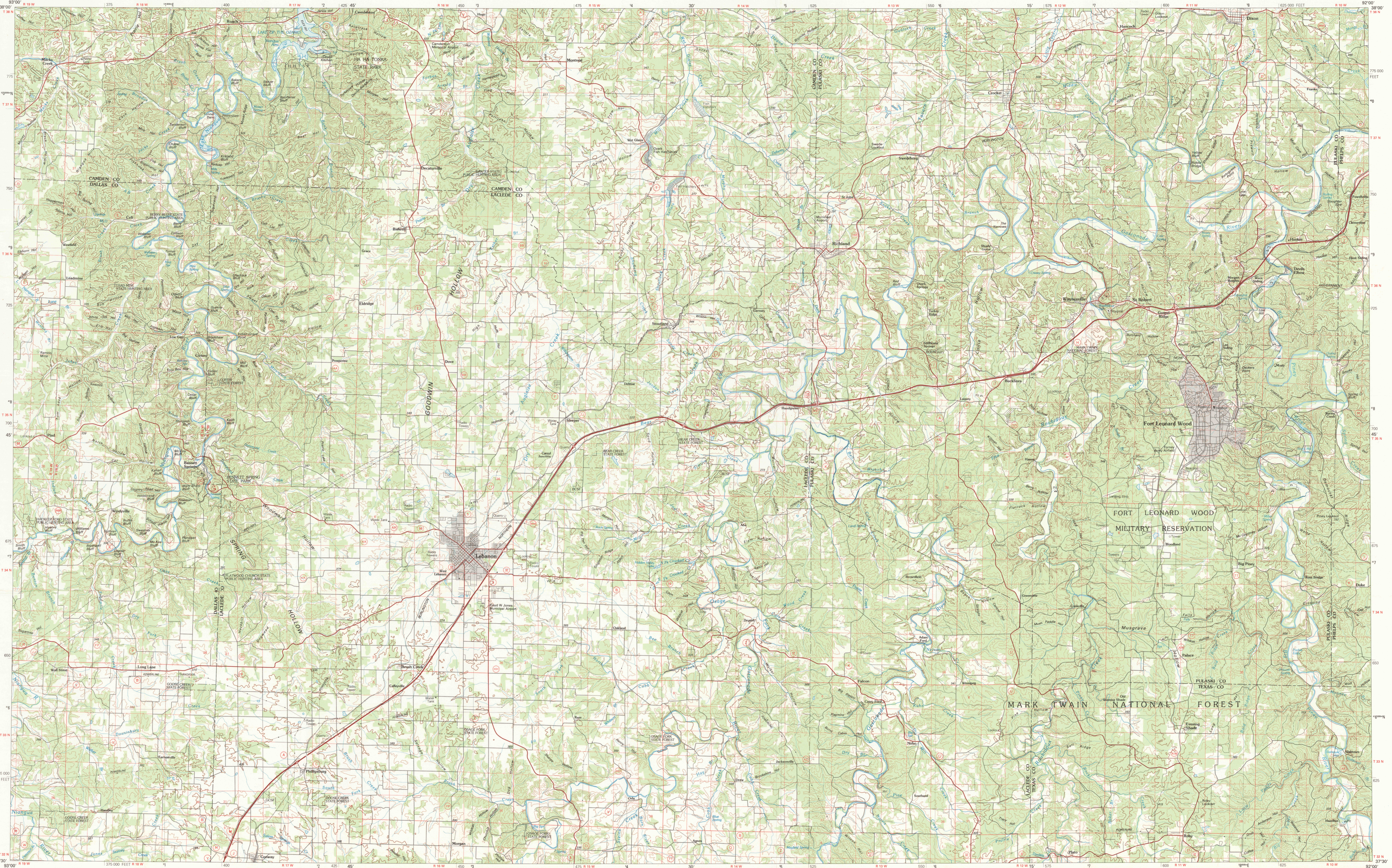
- Primary highway, hard surface
- Secondary highway, hard surface
- Light duty road, principal street, hard or improved surface
- Other road or street, not improved
- Road marker: Interstate, U.S.; State
- Railroad: standard gauge, narrow gauge
- Bridge: overpass, underpass
- Tunnel: road, railroad
- Built-up area: locality, elevation
- Airport: landing field, landing strip
- National boundary
- State boundary
- County boundary
- National or State reservation boundary
- Land grant boundary
- U.S. public lands survey: range, township, section
- Range, township, section line: protracted
- Power transmission line: pipeline
- Dam, dam with lock
- Cemetery: building
- Well: water well, spring
- Mine shaft, adit or cave, mine, quarry, gravel pit
- Campground, picnic area, U.S. location monument
- Ruins: cliff dwelling
- Disturbed surface: strip mine, lava, sand
- Contours: index, intermediate, supplementary
- Bathymetric contours: index, intermediate
- Stream, lake, reservoir, intermittent
- Rapids, large and small; falls, large and small
- Area to be submerged; marsh, swamp
- Land subject to controlled inundation; woodland
- Sand; mangrove
- Drains; viewpoint

A pamphlet describing topographic maps is available on request

RETURN TO: USGS AND HISTORICAL MAP ARCHIVES

LEBANON, MISSOURI

30 X 60 MINUTE SERIES (TOPOGRAPHIC)



LEBANON, MISSOURI
 37092-E1-TM-100
 1982